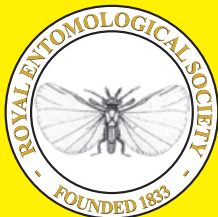


INSECT FESTIVAL

2011



Sunday 3 July 2011,
10am - 4pm
Yorkshire Museum & Gardens,
York

Live insect displays, demonstrations,
award-winning photographic displays,
CSI (Crime Scene Insects), national and
regional natural history societies, book
sellers, entomologist's equipment,
artwork, mini-beast hunts, face painting,
name your insect specimen...

...and much, much more!!!

Entry: £1 per adult,
FREE for under 16's

www.insectfestival.co.uk



www.royensoc.co.uk

Membership of the Society

The Society comprises Fellows and Members:

Fellowship is open to entomologists who have made a significant contribution to their science, through publications or other evidence of achievement. Fellows are entitled to make use of the title *Fellow of the Royal Entomological Society (F. R. E. S.)*.

Membership is open to all who have a genuine interest and enthusiasm in entomology. Membership does not require academic qualifications.

Activities of the Society

- Frequent one-day workshops organised by the Society's Special Interest Groups
- National Science Meeting annually – with a specialist international Symposium biennially
- Regional activities in all parts of the United Kingdom
- Postgraduate Forum
- *Antenna* – the house journal of the Society, sent free to the membership
- Each year the Society gives the Marsh Insect Conservation Award (prize £1,000), and other Awards (see website)
- In 2004 the Society launched 'National Insect Week' which was again held in 2010 (see www.nationalinsectweek.co.uk)
- In 2007 the Society launched the 'Wallace' Award for Post-graduates



Royal Entomological Society
www.royensoc.co.uk

The Mansion House, Chiswell Green Lane,
St. Albans, Herts, AL2 3NS, UK

Tel: +44 (0)1727 899387 • Fax: +44 (0)1727 894797
E-mail: info@royensoc.co.uk

Stands and Exhibits

| Stand Number | Stand Name | Stand Description |
|--------------|---|---|
| 1 | Reception and Royal Entomological Society | The aim of the Royal Entomological Society is "the improvement and diffusion of entomological science". To achieve this we organise meetings of a general and specialist nature, where scientific knowledge is presented and discussed. We also publish academic journals and identification handbooks to assist the general public and scientists. The Society was founded in 1833 as the Entomological Society of London and is the successor to a number of short-lived societies dating back to 1745. Many eminent scientists of the past, Darwin and Wallace to mention but two, have been Fellows of the Society. Through the years most internationally recognised entomologists have been and are, numbered among the Fellowship. |
| 2 | Small Life Supplies | Look at our locusts, in our new aluminium heated locust cage. See our large stick insects and mantids and also our fancy caterpillars. We breed all these insects and manufacture the proper insect cages out of aluminium, stainless steel and PVC. We also produce bespoke insect cages. |
| 3 | CSI (Crime Scene Insects) (University of Derby) | Our exhibit will introduce you to the world of forensic entomology and allow you to meet some of the insects of forensic importance. The exhibit will explain how insects can be used in crime investigation and enable you to do some hands-on crime solving on the day. |
| 4 | Butterfly Conservation (Yorkshire Branch) | Butterfly Conservation Yorkshire will exhibit a display of butterfly and moth images via both photographs and electronic media, with a sample of books and Lepidoptera-related objects for sale. Members will be on hand to discuss any butterfly- or moth-related queries and provide some interesting leaflets. |
| 5 | Harlequin Ladybird Survey | Ladybirds are very popular insects, with their iconic colours and reputation as the "gardener's friend". At our stand you can learn about native UK ladybirds and the arrival of the invasive harlequin ladybird, ladybird recording and research in the UK, and take part in ladybird games and activities. |

| Stand Number | Stand Name | Stand Description |
|--------------|---|--|
| 6 | RES National Insect Week 2012 | National Insect Week 25th June - 1st July 2012 National Insect Week's aim is to raise awareness and understanding of the importance and fascination of insects, and the vital role they play in our world. NIW2012 will encourage everyone to explore the importance of insects to people and the environment. You can also see last year's fantastic photo competition entries from NIW2010 on display in the tents outside (Stand 34). |
| 7 | Second Nature | Buying and selling out-of-print/antiquarian books on all aspects of natural history, including entomology and topography/ travel with a natural history interest. Website: www.secondnaturebooks.com |
| 8 | Freshwater Biological Association | The Freshwater Biological Association (FBA) stand will feature fascinating facts about insects and encourage all ages to get involved by looking at freshwater invertebrates under the microscope. We will offer information on our data, library and information services, training resources, courses, events, conferences and the scientific facilities available at our sites, provide the opportunity to become a member and purchase publications and identification keys. |
| 9 | University of Manchester Museum | The Manchester Museum's Entomology Department houses about three million specimens of insects collected from all over the world, which are kept in over 5,400 drawers/store-boxes. It is the third or fourth largest depository in the UK, depending on group. The Museum's particular strengths are the worldwide collections of Coleoptera, Dermaptera and Lepidoptera. |
| 10 | Fossil Insects in Amber and Entomology Book | We specialise in publishing natural history books with an emphasis on entomology and also in research on fossil insects and spiders preserved in 16 million-year-old amber from the Dominican Republic. Books and fossils in amber will be available to purchase. More details at: www.sirscientificpress.co.uk |

| Stand Number | Stand Name | Stand Description |
|--------------|---|---|
| 11 | FERA (Food and Environment Research Agency) | Did you know that the Food and Environment Research Agency (Fera) based at Sand Hutton has more than 25 scientists who work with insects? Some of the entomologists there study insect behaviour and use this knowledge to encourage beneficial insects, such as the pollinators, while others develop new methods of attracting and controlling native and non-native insects. There is a team of entomologists who work on identifying and monitoring native pest insects, and another who identify non-native pests of quarantine concern and work to prevent them establishing in the UK. Come along and meet a few entomologists and learn more about what we do. We will be demonstrating a few different areas of our work. Come along and learn more about aphids and how to identify them, or learn to spot some of the harmful foreign insect invaders. |
| 12 | Brambleby Books | Brambleby Books Ltd., founded in 2002, is an independent publisher of natural history books and poetry. For the Insect festival, we will have a special offer for our book for children <i>What's in your Garden?</i> as well as for grown-ups, <i>Garden Photo Shoot</i> , besides our other exciting nature titles. |
| 13 | Stockbridge Technology Centre | This stand will display the range of commercially available insects that greenhouse growers use in their crops within the UK. These beneficial species are used to control insect pest populations within crops and thereby help to reduce insecticide inputs whilst maintaining the high quality of British produce. |
| 14 | Amateur Entomologist's Society – Bug Club | The Bug Club promotes knowledge, understanding and enjoyment of insects and other small invertebrate animals to young people through the publication of books and periodicals and the organisation of educational events. The Bug Club is run by the Amateur Entomologists' Society as a joint venture with the Royal Entomological Society. |

| Stand Number | Stand Name | Stand Description |
|--------------|--|---|
| 15 | Elizabeth Diggins (Natural History Artist) | Elizabeth Diggins is a natural history artist working in graphite pencil and coloured pencil. Her inspiration comes from a love of the natural world, particularly insects and seashells. She exhibits her photo-realistic artwork regularly (see www.elizabethdiggins.co.uk) and has a range of prints and greetings cards. |
| 16a | Yorkshire Naturalists' Union (YNU) | An exhibition of British bumblebees using posters and specimens. You can also see British social wasps with some large exotic hornets, plus some common British solitary wasps and bees. The publications of the Bees, Wasps and Ants Recording Society (BWARS) will also be available. |
| 16b | Yorkshire Naturalists' Union (YNU) | An exhibition of photographs of Yorkshire insects, demonstrating the scope for recording insects without taking specimens. Talk to John who will be arguing the case for encouraging the non-collector to supply records and discuss the implications for entomology. |
| 16c | YNU Lepidoptera Study Group | This exhibit shows the activities of the YNU Lepidoptera Group which is a forum for moth recording. The Group also hold the YNU database of moth records totalling more than 1.2 million records. The exhibit will include live moths trapped the previous night at various localities in the area and help will be on hand for identifying moths. |
| 17 | Institute for Animal Health, Pirbright | Bloodsucking insects are found throughout the UK. In addition to biting gardeners and tourists, they can transmit diseases such as West Nile and bluetongue. At our stand you will have a chance to see larval and adult bloodsuckers and learn about their biology and their role in transmitting diseases and in solving crimes (CSI). |

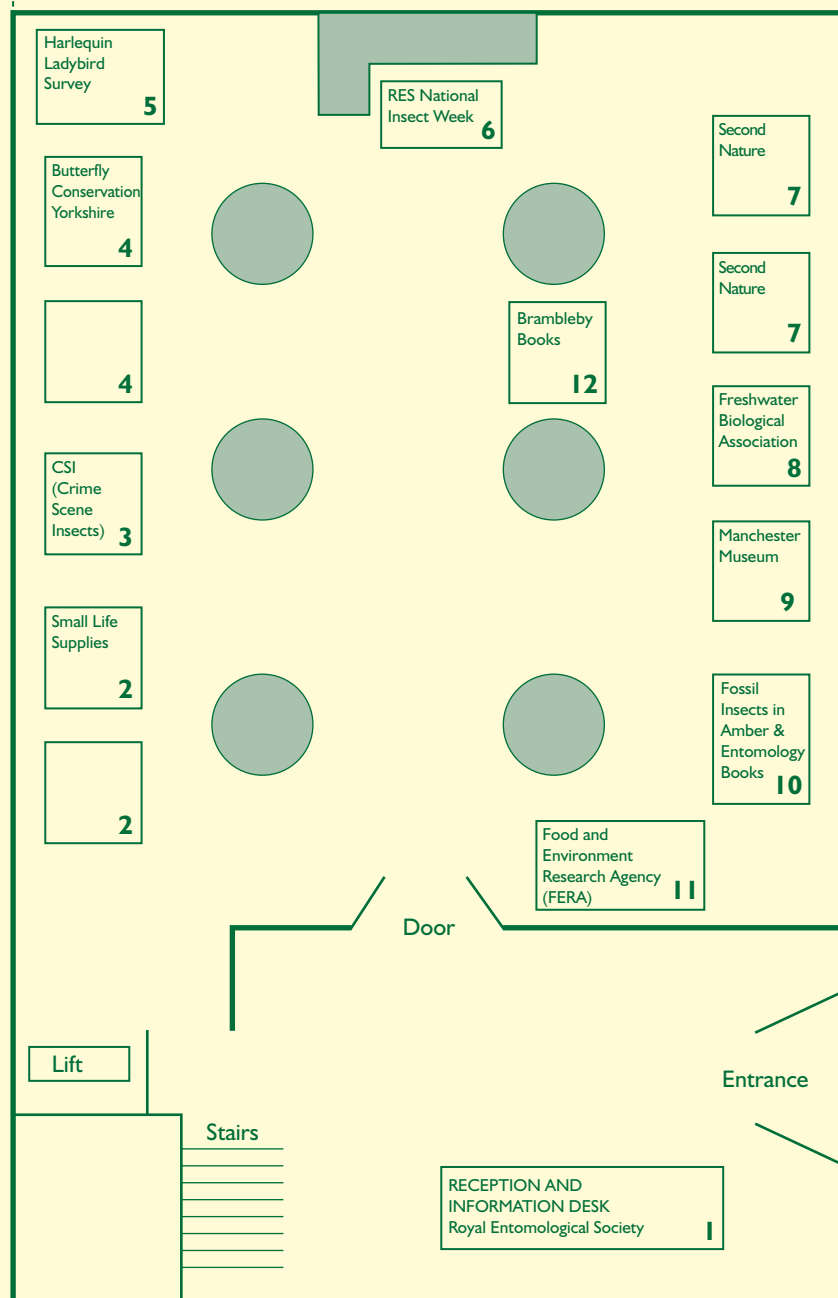
| Stand Number | Stand Name | Stand Description |
|--------------|--|---|
| 18 | Riverfly Partnership | The Riverfly Partnership is a network of partner organisations, representing anglers, conservationists, entomologists, scientists etc. With everyone working together to protect the water quality of our rivers, further the understanding of our riverfly populations and actively conserve riverfly habitats. |
| 19 | National Biodiversity Network Trust | The National Biodiversity Network is seeking to establish agreed standards for the collection, collation and exchange of biodiversity data and to improve public access to them. We will demonstrate how it does this through the NBN Gateway. |
| 20 | Thorne and Hatfield Moors Conservation Trust | Thorne & Hatfield Moors Conservation Forum was formed in 1989. Its aims include: To conserve the biodiversity, the geological, palaeoecological, archaeological and historic features of Thorne and Hatfield Moors and the wider Humberhead Levels, Promote the Moors as a natural and cultural resource, at all levels. Encourage high quality research to provide a scientific basis for the conservation of the Moors. Disseminate knowledge and understanding of the Moors, and of the issues affecting them. Facilitate communication and co-operation between organisations that share the above objectives. Encourage understanding and enjoyment of wildlife and the countryside through education programmes aimed at the community. For more information visit www.thmcf.org or email execsec@thmcf.org |
| 21 | Creepy Crawly Cupcakes | Creatively decorated insect-themed cupcakes that are simply irresistible. A selection of flavours available to satisfy all taste buds. A tasty home baked snack and popular treat for all occasions! |
| 22 | Buglife | At Buglife – The Invertebrate Conservation Trust – we aim to conserve all insects and other invertebrates. Visit our stand and learn more about our work to conserve Yorkshire's rarest insects such as the enigmatic Chestnut click beetle and the beautiful Tansy beetle (in partnership with Tansy Beetle Action Group), and find out how you can help look after the small things that run the world. |

| Stand Number | Stand Name | Stand Description |
|--------------|---|---|
| 23a | British Dragonfly Society | The British Dragonfly Society (BDS) promotes and encourages the study and conservation of dragonflies and their natural habitats. Visit the BDS stand to find out more about dragonflies. Children can make a pipe cleaner dragonfly to take away (we ask for a small donation to cover the cost of materials). |
| 23b | BDS Yorkshire Branch | The Yorkshire Branch of the British Dragonfly Society promotes the study and conservation of dragonflies and damselflies by encouraging people of all ages and backgrounds to take part in various activities which include field trips for members, as well as pond dipping and recording surveys. |
| 24 | Water Meadow Crafts | Nature-themed jewellery. Silver plated felt, glass, wood and various other bead jewellery and pet collar charms. Website: www.watermeadow-crafts.co.uk |
| 25 | Yorkshire Wildlife Trust | Yorkshire Wildlife Trust has worked for 65 Years to protect wildlife of all types and the places where they live. It manages 82 nature reserves across Yorkshire, advises landowners on managing their land for wildlife and inspires people to understand and enjoy their natural environment. |
| 26 | Yorkshire Museum Entomology Collection | Specimens from the Yorkshire Museum's entomology collection will be displayed alongside information about the history of the collection and its current use. We will also have information about recent work in the Museum Gardens to encourage insect life, plans for recording insects in the gardens, and how to get involved. |
| 27 | British Entomological and Natural History Society | This exhibit shows the activities, facilities and publications of the BENHS. The Society is principally for the field entomologist and concentrates on the identification, distribution and conservation of insects and similar invertebrates. We have meetings, workshops, publications, a library and a large collection. |

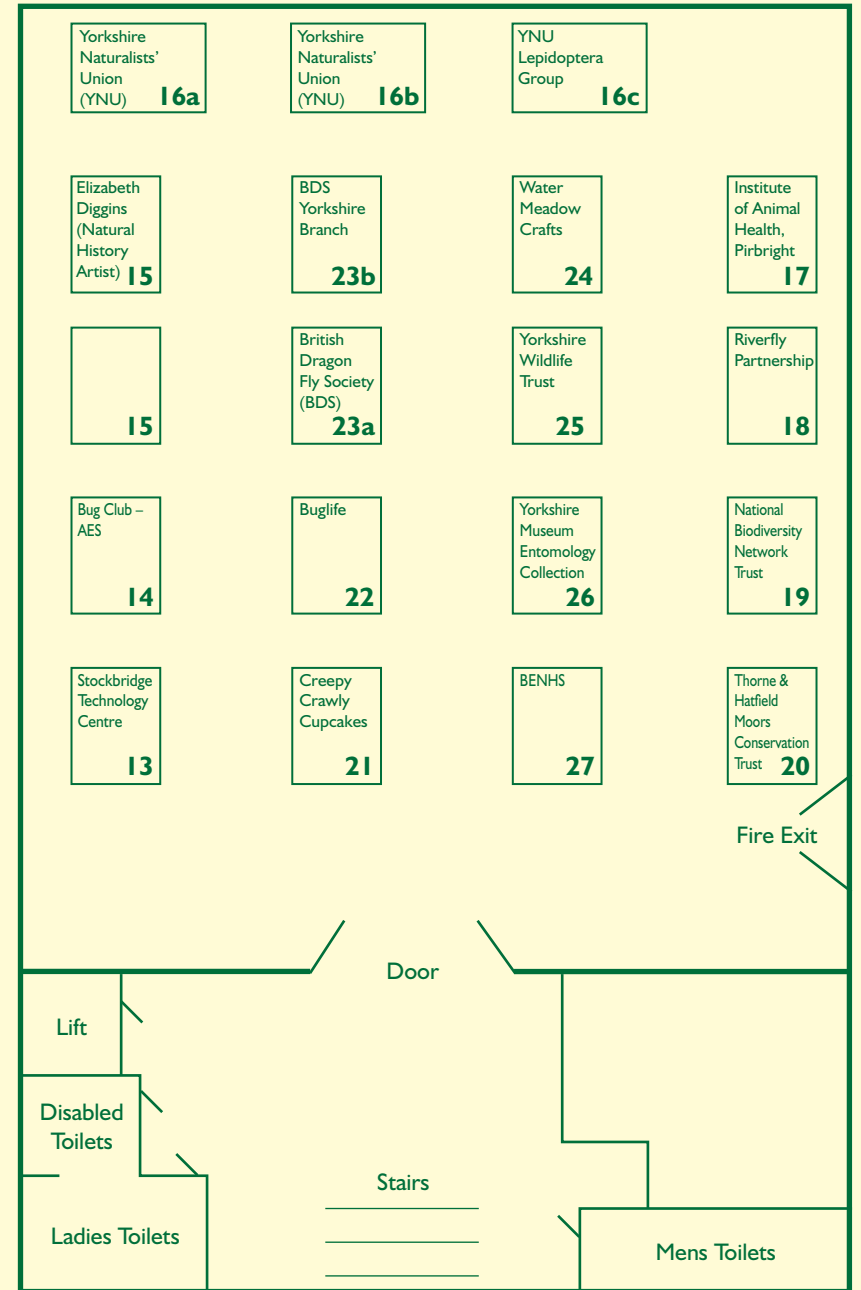
Outside Marquee

| Stand Number | Stand Name | Stand Description |
|--------------|---|--|
| 28 | Face Painting | Want to be a butterfly or a ladybird? Come along and have your face painted as your favourite insect. |
| 29 | Build a Minibeast | Children of all ages will build an anatomically correct model of an invertebrate of their choice. Using plastic cups and drinking straws these marvellous monsters will emerge to take part in the festival fun. A range of wings will be available along with photographs and electron micrographs of insect faces. The gardens will be invaded by a vast swarm of 30 cm long creepy crawlies, make sure you don't go home without your favourite insect. |
| 30 | PUPA Education | Come and make insect overwintering boxes from recycled materials. We will also provide information about other habitats such as bumblebee pots, stag beetle lollipops and dead log piles. Habitat sessions will be combined with discussion and explanations of why these habitats are important and what the benefits are to us. |
| 31 | Buzzing Borders | Visitors will be able to take away a free information booklet and seed pack to create their own 'Buzzing Border' – encouraging insects into back gardens around the UK! For those with less outside space, a 'Hunt the Hoverflies' competition will offer the chance to win a luxury bug shelter. |
| 32 | OPAL Yorkshire and the Humber | Come along and we'll introduce you to the fabulous world of worms, lichens, insects and pond creatures. We run surveys and a very useful computer forum www.iSpot.org.uk ; helping identify those tricky little bugs and other British wildlife. OPAL is a nationwide project aiming to inspire the next generation of naturalists. |
| 33 | Minibeast Hunts | Come and join our team of professional entomologists on one of our exciting mini beast hunts around the Museum Gardens. Sign up for the hunts in advance which will take place every 45 minutes throughout the day. |
| 34 | National Insect Week Photographic display | The award-winning insect photographic display from the NIW 2010 competition. |

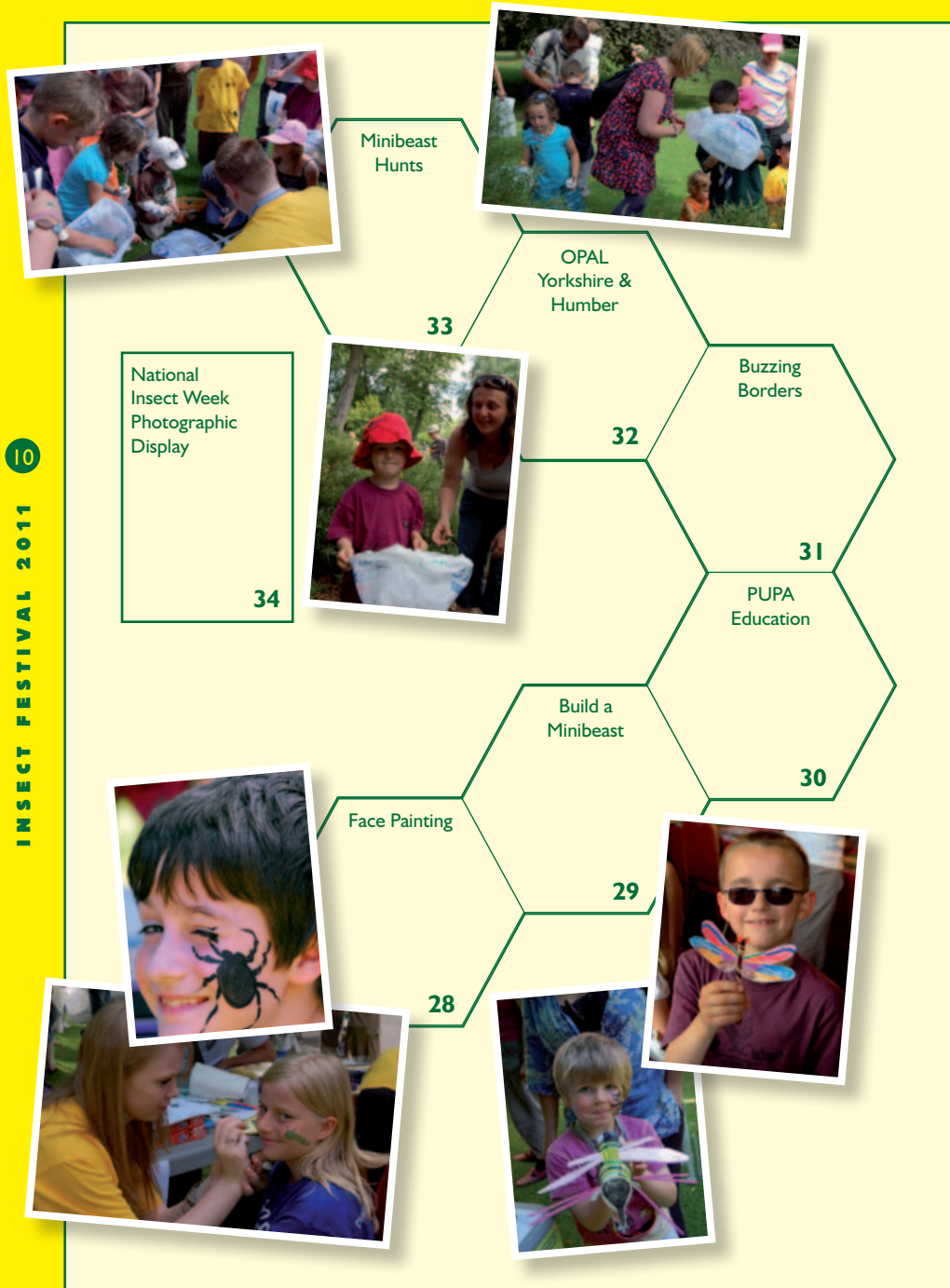
Hospitium Ground Floor



Hospitium First Floor



Outdoor Marquee



ALL IMAGES © NEVIN HEEDS

Activities

There are a range of activities on offer for all ages outside in the marquees. You can have your face painted, build a minibeast, count the hoverflies, build an insect box, make your own entomology equipment and much more. Come along to stands 28 – 34 to explore.

Mini Beast Hunts

Start at 11:00, 11:45, 12:30, 13:15, 14:00, and 14:45 from Stand 33 in the marquee

Come and join our team of professional entomologists on one of our exciting minibeast hunts. Our experts will guide you through the Museum Gardens and help you explore the amazing invertebrate world around us. Step into the shoes of an entomologist and use different techniques to capture and examine interesting insects. Use a range of special equipment including sweep nets, beating trays and pooters to explore a variety of habitats and learn more about the lives of the many insects living amidst the undergrowth. Follow the bumblebees as they visit the many flowers the flowers in the garden and learn about their important role in pollination. The minibeast hunts are fun for the whole family so come along and take part in some hands-on field entomology!

Insect Identification

Have you got an insect picture or specimen that you would like to identify? Find one of our IDENTomologists. They will be wearing an IDENTomologist badge and are based at many of the stands. Just look for:

Each of our IDENTomologists is an experienced entomologist who will try to help identify your pictures and specimens. They will answer your questions or tell you which expert IDENTomologist at the Insect Festival can help you.

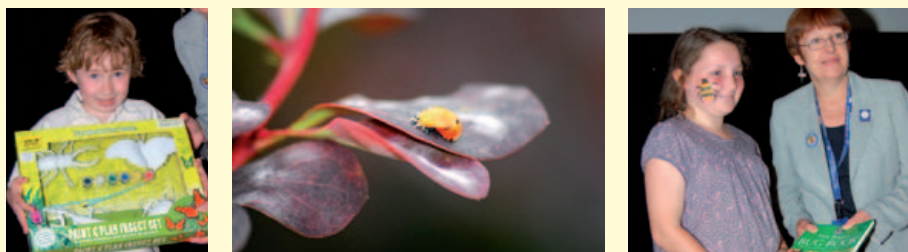
School Art Competition Prize Giving

13:00 outside stand 34 (National Insect Week marquee))

Primary school children around North Yorkshire have been drawing, painting and creating their favourite insects. The entries have been judged and the very best pictures have been picked out. Come along and see the winners and their artwork!



Insect Festival 2009 Highlights

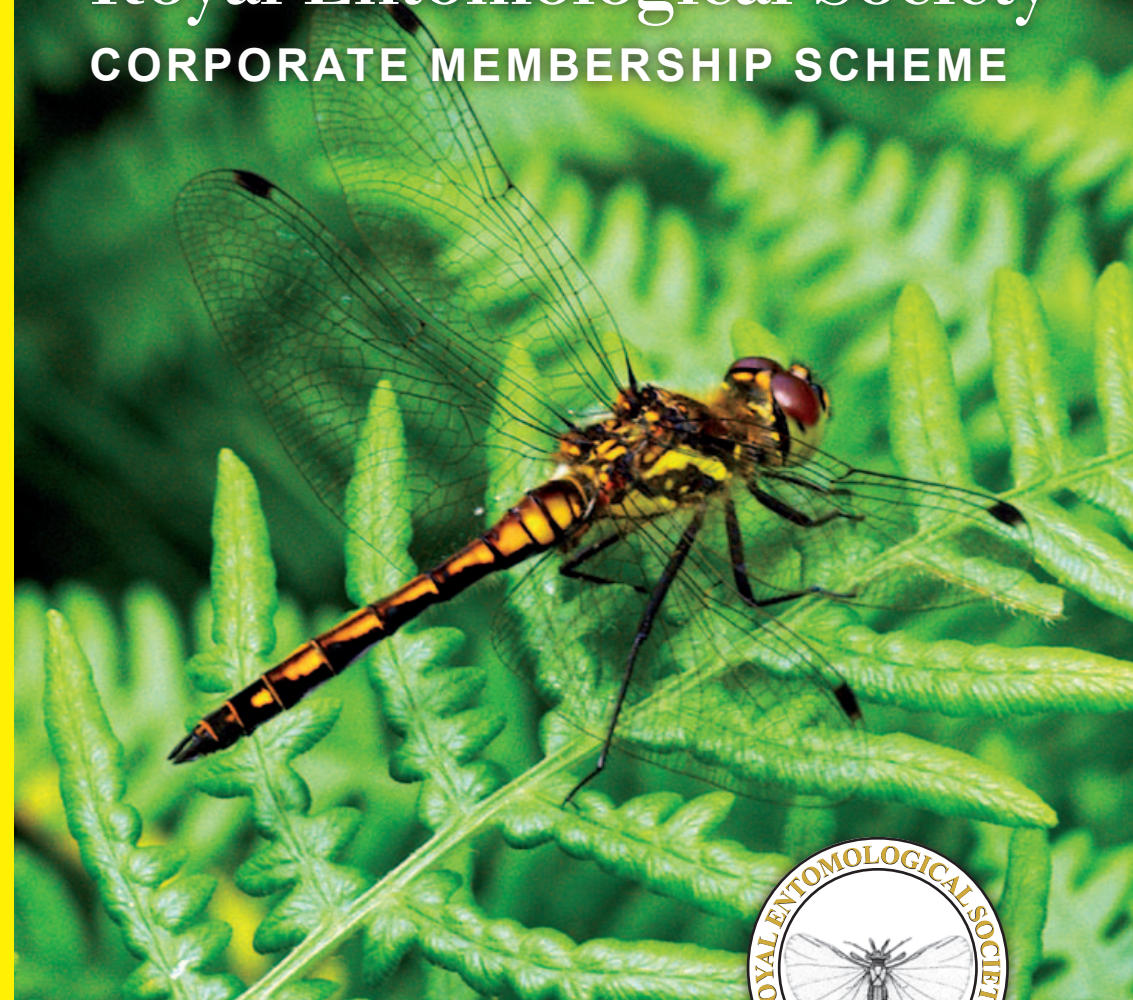


INSECT FESTIVAL 2011 12

ALL IMAGES © NEVIN HEADS

Royal Entomological Society

CORPORATE MEMBERSHIP SCHEME



Why is becoming a Corporate Member so important?

Corporate membership of the Royal Entomological Society is a great way for your company to demonstrate to its staff, suppliers and customers that you care about the environment and the future of our invertebrates.

Your support will mean the Society can continue its work of bringing the wonderful world of insects to a wide audience through its exciting events and initiatives.

To find out more about how your organisation can get involved with the Royal Entomological Society please contact:

Bill Blakemore, Registrar
 Tel: 01727 899387 Fax: 01727 894797
 Email: bill@royensoc.co.uk
www.royensoc.co.uk

ROYAL ENTOMOLOGICAL SOCIETY

The Royal Entomological Society exists to promote the dissemination of knowledge in all fields of insect science, and to facilitate communication between entomologists, both nationally and internationally. It is the principal society in the United Kingdom for professional entomologists, and also has many overseas members, as well as a strong amateur membership.

History of the Society

The Royal Entomological Society was founded in 1833 as the Entomological Society of London, and granted its royal charter by Queen Victoria in 1885. In 1920 the Society moved to its previous address at 41 Queen's Gate and in 1933 King George V granted the right to add the word 'Royal' to the title. Many eminent scientists of the past, Darwin and Wallace to mention but two, have been Fellows of the Society. Through the years most internationally recognised entomologists have been, and are, numbered among the Fellowship. In 2007 the Society moved to more spacious premises in St. Albans.

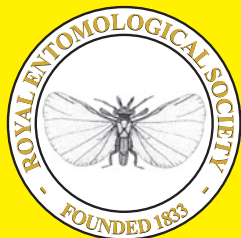
Who are we?

The Royal Entomological Society (RES) plays a major national and international role in disseminating information about the insect world and improving communication between entomologists. The development of insect science is essential if we are to protect our natural heritage and to understand how environmental problems, including climate change, influence the natural world.

What do we do?

Informing, involving, inspiring.

The RES supports insect science through our renowned scientific journals and other publications, our meetings and by providing a forum for disseminating research findings. Our quarterly magazine 'Antenna' provides members with information about upcoming meetings, a diary of events and the latest research undertaken by our Members and Fellows.



www.insectfestival.co.uk