

Royal Entomological Society

CORPORATE MEMBERSHIP SCHEME



DID YOU KNOW...?

95%

of all the animal species on the earth are invertebrates

There are around
24,000
species of insects
in the UK

10%

of the animal biomass of the world is made up of ants

Globally, about $\frac{1}{3}$
of food production relies
on pollinating insects



The Royal Entomological Society

Who are we?

The Royal Entomological Society (RES) plays a major national and international role in disseminating information about the insect world and improving communication between entomologists. The development of insect science is essential if we are to protect our natural heritage and to understand how environmental problems, including climate change, influence the natural world.

What do we do?

Informing, involving, inspiring.

The RES supports insect science through our renowned scientific journals and other publications, our meetings and by providing a forum for disseminating research findings. Our quarterly magazine 'Antenna' provides members with information about upcoming meetings, a diary of events and the latest research undertaken by our Members and Fellows.

National Insect Week

National Insect Week (NIW) is an initiative organised by the RES which aims to educate and inspire people of all ages about the wonders of the insect world.



NIW takes place every two years and is the Society's most high profile event. In 2006 almost 200 insect events took place throughout the country, and the initiative received the support of organisations including the Environment Agency, the Department for Education and Skills, the Forestry Commission and the Scout Association.



Visit www.nationalinsectweek.co.uk for more information.



Why is becoming a Corporate Member so important?

Corporate membership of the Royal Entomological Society is a great way for your company to demonstrate to its staff, suppliers and customers that you care about the environment and the future of our invertebrates.

Your support will mean the Society can continue its work of bringing the wonderful world of insects to a wide audience through its exciting events and initiatives.

Get involved

To suit the needs of different companies we offer two levels of sponsorship:

The Dragonfly Scheme: £500 per annum



Organisations signing up for this level of membership will receive:

- Corporate Membership Scheme certificate
- Acknowledgement and link on the RES website
- Use of “Affiliated to the Royal Entomological Society of London” in conjunction with the RES logo
- Copies of the quarterly member magazine ‘Antenna’
- Invitation to the National Insect Week exclusive launch event
- Discount on RES greeting cards & merchandise
- Three RES journals at the same rate as Fellows/ Members
- Three people to be able to attend the National Meeting and International Symposium of the Society at same rate as Members/Fellows

The Butterfly Scheme: £1,000 per annum



Organisations signing up for this level of membership will receive **all of the benefits listed above plus:**

- An article about the work of the RES for publication in your in-house magazine
- 50% discount for advertisements and/or inserts in ‘Antenna’
- Access to expert speakers from RES membership to address your company meetings
- Access to the RES library and picture library
- Brand presence at National Insect Week, ENTO and the Northern Exhibition

Application for Corporate Membership

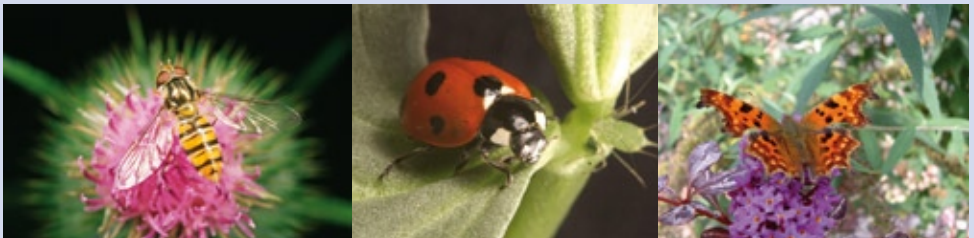
You can join our scheme by completing the form below or by downloading the application form online www.royensoc.co.uk

Please return this form to:

Corporate Membership Scheme, The Royal Entomological Society, The Mansion House, Chiswell Green Lane, Chiswell Green, St Albans, Hertfordshire, AL2 3NS.

I would like to become a corporate member of the Royal Entomological Society:

- The Dragonfly Scheme (£500 + VAT)
- The Butterfly Scheme (£1,000 + VAT)



Company name:

Company contact:

Company address:

Postcode:

Tel: Fax:

Email address:

Web address:

I enclose a cheque for the sum of £

Alternatively, please invoice me for £

Thank you for your support





Royal Entomological Society

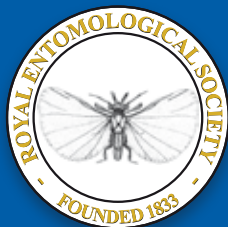
CORPORATE MEMBERSHIP SCHEME

To find out more about how your organisation can get involved with the Royal Entomological Society please contact:

Bill Blakemore, Registrar
Tel: 01727 899387
Fax: 01727 894797
Email: bill@royensoc.co.uk

www.royensoc.co.uk

Royal Entomological Society
The Mansion House
Chiswell Green Lane
Chiswell Green
St Albans
Hertfordshire
AL2 3NS



Thank you for your support

Patron: Her Majesty The Queen
Registered Charity No. 213620

Photography © Dr Dave Chesmore, Steve Hopkin,
Dr Gordon Port, Tom Brereton, Jim Asher, Dr Richard
Harrington, Steve Cham, Glyn McDonald, David Maitland.

Printed on paper produced from sustainable forestry stock