



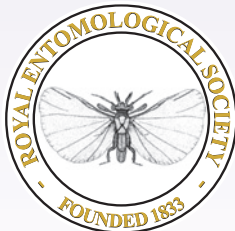
ENTO '18

NATIONAL SCIENCE MEETING

The good, the bad and the ugly

29 - 31 August 2018

Edge Hill University, Ormskirk



www.royensoc.co.uk/events

ENTO '18 ROYAL ENTOMOLOGICAL SOCIETY NATIONAL SCIENCE MEETING

Edge Hill University, Ormskirk, 29 - 31 August 2018

Advancement in the field of entomology is frequently driven by a variety of factors beyond scientific exploration and interest, from ease of sampling and identification or the favouring of more 'charismatic microfauna' to difficulties in obtaining resources required for specialised field or laboratory techniques or funding bias. This conference seeks to address this by providing a platform for areas of entomology that are often overlooked or understudied and discussing what can be learned from these groups.

Plenary Sessions

Three plenary sessions, each with an associated themed session, will explore three important and varied areas in entomology, which we have termed the good, the bad and the ugly:

The good will explore lesser studied groups which have key roles in ecosystem function.

The bad will explore lesser known vectors of disease, current knowledge, and challenges faced.

The ugly will explore the challenges and difficulties of studying and conducting research on less charismatic species or the microfauna and discuss what we can learn from them.



Culex pipiens under scanning electron microscope

Organisation

The meeting will include three plenary speakers each with a corresponding session on the conference theme. The remaining sessions will be linked to the areas of interest highlighted by the Society's journals, with the aim that at least one presentation in each will feature a lesser studied element of entomology. Oral and poster presentations on any topic of entomology are welcome including on more popular areas of entomology! Open sessions will be scheduled as required.

Proposed sessions

- Agriculture and Forest Entomology
- Ecological Entomology
- Insect Conservation and Diversity
- Insect Molecular Biology
- Medical and Veterinary Entomology
- Physiological Entomology
- Systematic Entomology
- Outreach and Citizen Science
- Open Sessions (topics not included above)

Further information, registration, abstract and accommodation booking forms are available from www.royensoc.co.uk

All those contributing papers or posters are required to register for the meeting.

Presentations

Authors are invited to submit abstracts for oral presentations and posters. Oral presentations will be allocated a 15 minute slot, with 12 minutes for the presentation, followed by 3 minutes for questions. Powerpoint presentations are encouraged. A poster session will also take place. Posters should be A1 size portrait.

Meeting Convenors:

Dr Anne Oxbrough
anne.oxbrough@edgehill.ac.uk

Dr Clare Strode
clare.strode@edgehill.ac.uk

ENTO '18 ROYAL ENTOMOLOGICAL SOCIETY NATIONAL SCIENCE MEETING

Edge Hill University, Ormskirk, 29 - 31 August 2018

Venue Information

Edge Hill University is a campus university located in the heart of the North West, close to the thriving market town of Ormskirk and the vibrant cities of Liverpool and Manchester. The combination of beautifully landscaped grounds, state-of-the-art facilities, historic architecture and lakes make it a unique and innovative campus. For more information about the University please see www.edgehill.ac.uk/about/ and for general information for visitors please see www.edgehill.ac.uk/location/ which includes maps and travel advice.

Ento '18 will be based in the Faculty of Health building on campus. There will be free parking for all guests available on campus for the duration of the conference. We have not planned any excursions for the conference, but why not extend your stay before and after the meeting to see red squirrels in Formby's pine forest or visit Martin Mere Wetland Centre? For more information visit www.visitenglandnorthwest.com/

Conference workshops

The conference will feature five workshops reflecting the specialist interests of researchers at Edge Hill University and the Royal Entomological Society. These will be available for booking prior to the conference and be of 2-4 hours duration.

1. *Mosquito husbandry and identification.*
Dr Clare Strobe, EHU.
2. *Collembola identification and preparation techniques.* Mr Thom Dallimore, EHU.

Plenary Speakers:

Professor Stefan Scheu – Georg August University Göttingen

The Good – *Belowground goodies: Ecology and evolution of soil microarthropods*

Professor Richard Wall – Bristol University

The Bad – *Ticks and tick-borne disease*

Dr Jason Dombroskie – Cornell University
Insect collection

The Ugly – *Yes that's nice... but look at this! Challenges of generating interest in and relevance to the non-charismatic microfauna*

Professor Lin Field – Rothamsted Research
Title tbc

3. *Spider identification and ecology.*
Dr Anne Oxbrough, EHU.
4. *SEM your insect – bring a study specimen or use one of ours, be shown how to use the Scanning Electron Microscope and get a digital picture of your specimen to take away.*
Mr Dave Goodson, EHU.
5. *Public Outreach in Entomology.*
Dr Luke Tilley, RES.

Special Interest Group meetings

Those requiring a room for a SIG meeting should contact Vicky Gentile, Chair of the local organising committee as soon as possible to discuss requirements.

E-mail: Victoria.gentile@edgehill.ac.uk



Temperature Controlled Mosquito Insectaries at Edge Hill University

ENTO '18 ROYAL ENTOMOLOGICAL SOCIETY NATIONAL SCIENCE MEETING

Edge Hill University, Ormskirk, 29 - 31 August 2018

OFFER OF PRESENTATION

DEADLINE FOR SUBMISSION OF ABSTRACTS: 31 May 2018

Part 1

The following Specialist Sessions will be held. Please tick the appropriate session for your presentation. If you feel that your research does not fit into any of these sessions, we would still encourage you to submit an abstract which, if accepted, will be placed into the session that we feel would be most appropriate, or an additional session may be created.

- The Good – Associated Plenary Session 1
- The Bad – Associated Plenary Session 2
- The Ugly – Associated Plenary Session 3
- Agriculture and Forest Entomology
- Ecological Entomology
- Insect Conservation and Diversity
- Insect Molecular Biology
- Medical and Veterinary Entomology
- Physiological Entomology
- Systematic Entomology
- Outreach and Citizen Science
- Open Sessions

Workshops attendance

You may sign up to a maximum of one workshop:

- Mosquito husbandry and identification
- Collembola identification and preparation techniques
- Spider identification and ecology
- SEM your insect
- Public Outreach in Entomology

Please go to Part 2

ENTO '18 ROYAL ENTOMOLOGICAL SOCIETY NATIONAL SCIENCE MEETING

Edge Hill University, Ormskirk, 29 - 31 August 2018

OFFER OF PRESENTATION

Part 2

Please print clearly

Author(s) (presenting author first) _____

Institution (please print) _____

Address for correspondence (please print) _____

Postcode _____

Tel _____ Fax _____

E-mail _____

Oral/Poster Presentation (please delete as appropriate)

I wish/do not wish to be considered for the student prize as below (please delete as appropriate)

Prizes: 1st £150, 2nd £100 will be given for the best two oral and best two poster presentations.

Title of Presentation (20 word max): _____

Standard oral presentations will be allocated a 15 minute slot, with 12 minutes for presentation followed by 3 minutes for questions. Posters should be A1 in size and portrait orientation.

Submission of Form:

This 'Offer of Presentation' form, including title and abstract details, should be sent to the organiser below by 31 May 2018:

"Ento '18 Convenor", Dr Anne Oxbrough, Bio209, Department of Biology, Biosciences Building,
Edge Hill University, Ormskirk, Lancashire, L39 4QP
E-mail: ento18@royensoc.co.uk

PLEASE NOTE THAT THE SEPARATE REGISTRATION FORM SHOULD BE SENT TO:

Kirsty Whiteford, Royal Entomological Society, The Mansion House, Chiswell Green Lane,
St Albans, Herts AL2 3NS
Fax: +(44) (0)1727 894797
E-mail: kirsty@royensoc.co.uk

ENTO '18 ROYAL ENTOMOLOGICAL SOCIETY NATIONAL SCIENCE MEETING

Edge Hill University, Ormskirk, 29 - 31 August 2018

REGISTRATION FORM

Part 1

CONTACT DETAILS Please use block capitals

Name: _____

Address: _____

Postcode _____

Tel: _____ Twitter handle: _____

E-mail: _____

BADGE DETAILS: name and affiliation _____

1) REGISTRATION FEES, WHOLE CONFERENCE FEE EXCLUDING ACCOMMODATION:

Category

Non-Member £299.00

Member £249.00

Student £199.00

RATE, EXCLUDING ACCOMMODATION INCLUDES:

- Conference bag, abstract booklet and access to all scientific sessions
- Refreshments, Wednesday-Friday
- Lunch each day, Wednesday-Friday
- Wine reception & BBQ on Wednesday evening

2) REGISTRATION FEES, WHOLE CONFERENCE FEE INCLUDING ACCOMMODATION:

Category

Non-Member £431.00

Member £381.00

Student £331.00

24 HR RATE, INCLUDING ACCOMMODATION INCLUDES:

- Includes bed and breakfast on Tuesday, Wednesday and Thursday
- Single ensuite room on campus
- Conference bag, abstract booklet and access to all scientific sessions
- Refreshments, Wednesday-Friday
- Lunch each day, Wednesday-Friday
- Wine reception & BBQ on Wednesday evening

3) ADDITIONAL COSTS

a) Conference dinner, including wine, Thursday 30th August

Delegate Fee £45.00

Accompanying partner £45.00

Student £30.00

b) Dinner – Tuesday 28th August on campus

All Delegates £16.00

c) B&B accommodation – Friday 31st August

All Delegates £44.00

Please provide details of any special dietary or other requirements here: _____

Please go to Part 2

ENTO '18 ROYAL ENTOMOLOGICAL SOCIETY NATIONAL SCIENCE MEETING

Edge Hill University, Ormskirk, 29 - 31 August 2018

REGISTRATION FORM

Part 2

PAYMENT DETAILS:

No booking will be confirmed unless full payment accompanies this form.

I enclose a cheque for £ _____ made payable to the 'Royal Entomological Society'

OR

*Please charge £ _____ to the following Visa/MasterCard/American Express/Maestro:

Card number

Valid from ____ / ____ / ____ Expiry date ____ / ____ / ____ Maestro only – issue no. ____

3 digit security code ____

Card holder's name _____

Card holder's address _____

Postcode _____

Card holder's signature _____

OR

By Bank Transfer:

Lloyds Bank plc, St Albans Branch, PO Box 1000, BX1 1LT.

A/C No. 01921533

BIC: LOYD GB 21185

Sort Code: 30-97-25

IBAN: GB47 LOYD 3097 2501921533

Please ensure that your payment is referenced 'Ento18/your surname', and **add any relevant bank charges made by your bank.**

PLEASE RETURN THIS FORM TO:

Kirsty Whiteford, Royal Entomological Society, The Mansion House, Chiswell Green Lane, St Albans, Herts AL2 3NS

Fax: +(44) (0)1727 894797

E-mail: kirsty@royensoc.co.uk

REFUNDS

Our refund policy for cancellations is as follows:

- Cancellation before 12 July 2018 – 50% refund
- Cancellation after 12 July 2018 but before 8 August 2018 – 25% refund
- Cancellations after 8 August 2018 – no refunds.

ENTO '18 ROYAL ENTOMOLOGICAL SOCIETY NATIONAL SCIENCE MEETING

Edge Hill University, Ormskirk, 29 - 31 August 2018

GUIDANCE NOTES

The Ento '18 National Meeting will run from the morning of Wednesday 29th August to the afternoon of Friday 31st August 2018. Everyone attending this meeting in whatever capacity must complete a booking form. **The booking form must be accompanied by full payment, no meals will be reserved without it.** If your institution is issuing a cheque for payment do not rely on your finance office to forward your booking form to the RES. On many occasions finance officers have failed to send us forms, which results in obvious problems. When the RES receives your booking form it will be processed and a letter of confirmation plus joining instructions will be sent to you as soon as possible. You should keep a copy of the completed form for your records.

SEND YOUR BOOKING FORM BY ONE METHOD ONLY. Check your booking confirmation carefully to ensure that all the meals that you require have been booked.

Parking

There will be free parking available for all guests for the duration of the Edge Hill University campus.

Student Support

Financial support is being made available by the RES for students wishing to attend the meeting.

At its maximum this will not exceed 50% of costs. Preference will be given to Members.

Please note that there are limited funds available for this grant. Early application is strongly recommended. Applications must be made by letter or email (kirsty@royensoc.co.uk) to the Registrar at the RES office and the deadline for receipt is 1st July 2018.

Registration

Booking forms must be returned by 11th August 2018 at the latest. Everyone who wishes to attend the meeting, INCLUDING SPEAKERS AND POSTER PRESENTERS, MUST COMPLETE A FORM.

Accommodation

There will be en-suite accommodation available for all guests on Edge Hill's campus at a fixed cost of £44.00 per person for bed and breakfast per night. This will be available to book when registration opens. There are several alternative accommodation options in Ormskirk and a wide range of hotels and hostels available in Liverpool, which is a 25 minute direct train journey away.

Queries

Registration and related issues: RES office

PLEASE NOTE OUR REFUND POLICY ON PART 2 OF THE REGISTRATION FORM

Royal Entomological Society
The Mansion House, Chiswell Green Lane,
St Albans, Herts AL2 3NS

Tel: +(44) (0)1727 899387
Fax: +(44) (0)1727 894797
E-mail: kirsty@royensoc.co.uk
www.royensoc.co.uk

