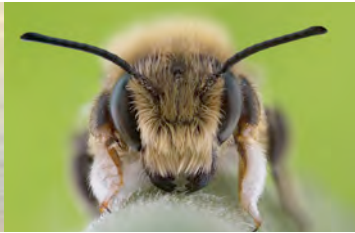


ENTO '19



INTERNATIONAL SYMPOSIUM & NATIONAL SCIENCE MEETING

Vectors of Diseases

20 - 22 August 2019
London School of Hygiene and
Tropical Medicine

Registration Information



For registration and submission details visit:
www.royensoc.co.uk/events

ENTO '19

ROYAL ENTOMOLOGICAL SOCIETY
INTERNATIONAL SYMPOSIUM &
NATIONAL SCIENCE MEETING

London School of Hygiene and Tropical Medicine, 20-22 August 2019

The theme of 'Vectors of diseases' has implications at all scales within entomology from the role of genes in the evolution of complex social behaviour to the impacts of environmental change on species-interaction networks. Depending on the presentations offered by delegates, sessions may be combined or delegates may be asked to present a poster instead of a talk (or vice versa).

Organisation

The Meeting will consist of three plenary sessions in the International Symposium, which will be held at the start of each day. The plenary sessions, each with an associated themed session, will explore important challenges to the control of vector-borne diseases: *evaluation, innovation and implementation*. The plenary sessions will be followed by parallel sessions in the National Science Meeting. There will also be an additional half-day parallel session on plant vector-borne diseases in connection with the Connected Network.

The remaining sessions of the meeting will be linked to the areas of interest highlighted by major stakeholders involved in vector control and surveillance. In addition, oral and poster presentations on any topic of entomology are welcomed. Open sessions will be scheduled as required.

Meeting Convenors:

Prof Mary Cameron (LSHTM)
mary.cameron@lshtm.ac.uk

Prof James Logan (LSHTM)
james.logan@lshtm.ac.uk

Plenary Sessions

Innovation will explore new tools on the block to address challenges such as insecticide resistance and exophily of vectors.

Chair: James Logan (LSHTM)



Plenary speaker: Luke Alphey (Pirbright Institute)

Invited speaker: Orin Courtenay (Warwick University)

Invited speaker: Willem Taken (Wageningen University and Research)

Evaluation will explore how to test the efficacy and practice tools (products, technologies and approaches) to be used in vector control.

Chair: Mark Rowland (LSHTM)

Plenary speaker: Nick Hamon (Innovative Vector Control Consortium, Liverpool)

Invited speaker: Natacha Protopopoff (LSHTM, Moshi, Tanzania)

Implementation will explore the challenges relating to upscaling new tools and sustaining control.

Chair: Mary Cameron (LSHTM)

Plenary speaker: Raman Velayudhan (Vector Control Advisory Group, WHO Geneva)

Invited speaker: Hmooda Tota Kafy (Federal Ministry of Health, Sudan)

Invited speaker: John Pickett (Cardiff University)

Parallel sessions

1. Insecticide resistance management

Chair: David Weetman (Liverpool School of Tropical Medicine)

2. Transmission of vector-borne diseases

ENTO'19

ROYAL ENTOMOLOGICAL SOCIETY
INTERNATIONAL SYMPOSIUM &
NATIONAL SCIENCE MEETING

London School of Hygiene and Tropical Medicine, 20-22 August 2019

Chair & invited speaker: Filipe Dantas Torres (Fiocruz, Recife, Brazil)

3. Innovative tools for vector research

Chair: Martin Hall (Natural History Museum, London)

Invited speaker: Richard Bomphrey (Royal Veterinary College, University of London)

4. Vector/Host/Pathogen Interactions

Chair: Simon Carpenter (Pirbright Institute)

5. Role of mathematical modelling in vector-borne diseases

Chair: Kathleen O'Reilly (LSHTM)

6. Integrated Vector/Pest Management

Chair: Jo Lines (LSHTM)

Invited speaker: Steve Lindsay (University of Durham)

The conference will conclude with a plenary session on **The Grand Challenges for Entomology**.



Conference workshops

The conference will feature 4 workshops reflecting the specialist interests of researchers at the School and the Royal Entomological Society. These will be available for booking prior to the conference and be of 90 mins duration, Wednesday afternoon.

1. Partnering with industry
2. Entomology Networks
3. Knowledge Translation
4. Learning from international collaborations in vector-borne disease: GCRF perspectives from the CONNECTED Network

Presentations

Authors are invited to submit abstracts for oral presentations and posters. Oral presentations will be allocated a 15 minute slot, with 12 minutes for the presentation, followed by 3 minutes for questions. Powerpoint presentations are encouraged. A poster session will also take place, with posters available throughout the meeting for viewing. Posters should be A1 size portrait.

Venue Information

Founded in 1889 at the London Docks, "the School" is now based in Bloomsbury, where it has two main sites at Keppel Street and Tavistock Place. ENTO'19 will be based in our Keppel Street building, which was officially opened on 18th July 1929 by HRH the Prince of Wales. It was listed as Grade II in the 1980's. For more information about our Keppel Street building please see <https://www.lshtm.ac.uk/aboutus/introducing/history/building> and for general information for the visitors, including maps and travel advice, please see <https://www.lshtm.ac.uk/aboutus/contact/location>.

Note that there is no parking at any of the School's sites, but our Central London location is well served by a variety of public transport options.

There is wheel chair access to all rooms allocated for this event, but please let the organisers know if you need any special requirements.



London School of Hygiene and Tropical Medicine

London School of Hygiene and Tropical Medicine, 20-22 August 2019

REGISTRATION FORM

Part 1

CONTACT DETAILS Please use block capitals

Name

Address

Postcode

Tel Twitter handle:

E-mail

BADGE DETAILS: name and affiliation

Dietary requirements/any other special requirements here eg. wheelchair access:

A) REGISTRATION FEES, WHOLE CONFERENCE FEE:

Category

Non-Member £299.00

Member £249.00

Student £199.00

B) RATE INCLUDES:

- Conference bag, abstract booklet and access to all scientific sessions
- Refreshments Tuesday - Thursday
- Lunch each day, Tuesday - Thursday
- Wine reception Tuesday evening

ENTO '19

ROYAL ENTOMOLOGICAL SOCIETY
INTERNATIONAL SYMPOSIUM &
NATIONAL SCIENCE MEETING

London School of Hygiene and Tropical Medicine, 20-22 August 2019

REGISTRATION FORM

Part 2

PAYMENT DETAILS:

No booking will be confirmed unless full payment accompanies this form.

I enclose a cheque for £ _____ made payable to the 'Royal Entomological Society'

OR

*Please charge £ _____ to the following Visa/MasterCard/American Express/Maestro:

Card number

Valid from ____ / ____ / ____ Expiry date ____ / ____ / ____ Maestro only – issue no. ____

3 digit security code _____

Card holder's name _____

Card holder's address _____

Postcode _____

Card holder's signature _____

OR

By Bank Transfer:

Lloyds Bank plc, St Albans Branch, PO Box 1000, BX1 1LT.

A/C No. 01921533

BIC: LOYD GB 21185

Sort Code: 30-97-25

IBAN: GB47 LOYD 3097 2501921533

Please ensure that your payment is referenced 'Ento19/your surname', and **add any relevant bank charges made by your bank.**

PLEASE RETURN THIS FORM TO:

Kirsty Whiteford, Royal Entomological Society, The Mansion House, Chiswell Green Lane, St Albans, Herts AL2 3NS

Fax: +(44) (0)1727 894797

E-mail: kirsty@royensoc.co.uk

REFUNDS

Our refund policy for cancellations is as follows:

- Cancellation Before 30 June 2019 – 50% refund
- Cancellation after 30 June but before 19 July – 25% refund
- Cancellations after 19 July – no refunds.

OFFER OF PRESENTATION

DEADLINE FOR SUBMISSION OF ABSTRACTS: 31st May 2019

Part 1

The following Specialist Sessions will be held. Please tick the appropriate session for your presentation. If you feel that your research does not fit into any of these sessions, we would still encourage you to submit an abstract which, if accepted, will be placed into the session that we feel would be most appropriate, or an additional session may be created.

- Plenary 1. Innovation**
- Plenary 2. Implementation**
- Plenary 3. Evaluation**
- Parallel 1. Insecticide resistance management**
- Parallel 2. Transmission of vector-borne diseases**
- Parallel 3. Innovative tools for vector research**
- Parallel 4. Vector/Host/Pathogen Interactions**
- Parallel 5. Role of mathematical modelling in vector-borne diseases**
- Parallel 6. Integrated Vector/Pest Management**

Workshop Attendance (these are to be confirmed)

You may sign up to a maximum of one workshop:

- 1. Partnering with industry**
- 2. Entomology Networks**
- 3. Knowledge translation**
- 4. Learning from international collaborations in vector-borne disease: GCRF perspectives from the CONNECTED Network**

ENTO '19

ROYAL ENTOMOLOGICAL SOCIETY
INTERNATIONAL SYMPOSIUM &
NATIONAL SCIENCE MEETING

London School of Hygiene and Tropical Medicine, 20-22 August 2019

OFFER OF PRESENTATION

Part 2

Please print clearly

Author(s) (presenting author first)

Institution (please print)

Address for correspondence (please print)

Postcode

Tel:

Fax:

E-mail:

Oral/Poster Presentation (please delete as appropriate)

I wish/do not wish to be considered for the student prize as below (please delete as appropriate)

Prizes: 1st £200, 2nd £150 will be given for the best two oral and best two poster presentations.

Title of Presentation (20 word max):

SUBMISSION OF FORM:

This 'Offer of Presentation' form, including title and abstract (max. 200 words), should be sent (by surface mail or electronically) to the organiser below by 31st May 2019:

"Ento '19 Convenor", Professor Mary Cameron, London School of Hygiene & Tropical Medicine, Keppel Street, London, WC1E 7HT

E-mail: ento19@royensoc.co.uk

PLEASE NOTE THAT THE SEPARATE REGISTRATION FORM SHOULD BE SENT TO:

Kirsty Whiteford, Royal Entomological Society, The Mansion House, Chiswell Green Lane, St Albans, Herts AL2 3NS

Fax: +(44) (0)1727 894797

E-mail: kirsty@royensoc.co.uk

ENTO '19

ROYAL ENTOMOLOGICAL SOCIETY
INTERNATIONAL SYMPOSIUM &
NATIONAL SCIENCE MEETING

London School of Hygiene and Tropical Medicine, 20-22 August 2019

GUIDANCE NOTES

The International Symposium and National Meeting will run from the morning of Tuesday 20th to the afternoon of Thursday 22nd August 2019. Everyone attending this meeting in whatever capacity must complete a booking form. The booking form must be accompanied by full payment, no meals will be reserved without it. If your institution is issuing a cheque for payment do not rely on your finance office to forward your booking form to the RES. On many occasions finance officers have failed to send us forms, which results in obvious problems. When the RES receives your booking form it will be processed and a letter of confirmation plus joining instructions will be sent to you as soon as possible. You should keep a copy of the completed form for your records.

SEND YOUR BOOKING FORM BY ONE METHOD ONLY. Check your booking confirmation carefully to ensure that all the meals that you require have been booked.

Parking

No parking is available for delegates on campus.

Student Support

Financial support is being made available by the RES for students wishing to attend the meeting. At its maximum this will not exceed 50% of

costs. Preference will be given to Members.

Please note that there are limited funds available for this grant. Early application is strongly recommended. Applications must be made by letter or email (kirsty@royensoc.co.uk) to the Registrar at the RES office and the deadline for receipt is 19 July 2019.

Registration

Booking forms must be returned by 19 July 2019 at the latest. Everyone who wishes to attend the meeting, **INCLUDING SPEAKERS AND POSTER PRESENTERS, MUST COMPLETE A FORM.**

Accommodation

There will **not be** any accommodation on site at LSHTM, the local convenors have provided a list of local hotels for delegates to book their own requirements:

<https://www.royensoc.co.uk/sites/default/files/Hotels%20near%20LSHTM.pdf>

Queries

Any queries regarding Ento '19 should be directed to the RES office.

PLEASE NOTE OUR REFUND POLICY ON PART 2 OF THE REGISTRATION FORM

Royal Entomological Society
The Mansion House, Chiswell Green Lane,
St Albans, Herts AL2 3NS

Tel: +(44) (0)1727 899387

Fax: +(44) (0)1727 894797

E-mail: kirsty@royensoc.co.uk

www.royensoc.co.uk

