

INTERESTED IN INSECT SCIENCE?

Royal Entomological Society Membership Application Form

Royal Entomological Society

The Royal Entomological Society exists to promote the dissemination of knowledge in all fields of insect science, and to facilitate communication between entomologists, both nationally and internationally. It is the principal society in the United Kingdom for professional entomologists, and also has many overseas members, as well as a strong amateur membership.

History of the Society

The Royal Entomological Society was founded in 1833 as the Entomological Society of London, and granted its royal charter by Queen Victoria in 1885. In 1920 the Society moved to its previous address at 41 Queen’s Gate and in 1933 King George V granted the right to add the word ‘Royal’ to the title. Many eminent scientists of the past, Darwin and Wallace to mention but two, have been Fellows of the Society.

Through the years most internationally recognised entomologists have been, and are, numbered among the Fellowship. In 2007 the Society moved to more spacious premises in St. Albans.

Membership of the Society

The Society comprises Fellows and Members:

Fellowship is open to entomologists who have made a significant contribution to their science, through publications or other evidence of achievement. Fellows are entitled to make use of the title *Fellow of the Royal Entomological Society (F. R. E. S.)*.

Membership is open to all who have a genuine interest and enthusiasm in entomology. Membership does not require academic qualifications. Members are now entitled to use the suffix *Mem.R.E.S.*, not applicable for students.

A P P L I C A T I O N F O R M E M B E R S H I P

If you wish to apply to become a Member of the Royal Entomological Society, please fill in this form, detach it and send it to the Registrar (address overleaf).

Applicants for Membership should also complete the section on Methods of Payment. Any person wishing to apply for Fellowship should complete the separate Fellowship application.

Surname: _____

First names: _____

Title: Mr/Mrs/Miss/Ms/Dr
Other (please specify) _____

Address: _____

Postcode: _____

Telephone no: _____

E-mail address: _____

Date of birth: _____

Gender M/F: _____

Degree details (BSc, PhD etc) if applicable: _____

Course Termination Date: _____

Please register me for information about Entomological Special Interest Groups (please tick):

- Aphids
- Arthropod Cuticle
- Climate Change
- Ecology
- Endosymbionts
- Entomophagy
- Genomics
- Infection & immunity
- Insect rearing
- Orthopteroids
- Pollination
- Public understanding of entomology
- Taxonomy
- Aquatic
- Behaviour
- Conservation
- Electronic & Computing Technology
- Forest insects and their allies
- Insect data
- Medical & Veterinary
- Parasitoids
- Post Harvest
- Sustainable Agriculture

form continues overleaf...

Royal Entomological Society

The Society's Offices

- The Mansion House is open to members Monday to Friday between 9.30 am and 4.00 pm
- The General Office is open for enquiries and sale of publications

The Library

- The Society possesses one of the finest entomological libraries in the world, which is open to the membership
- A loan and photocopying service is available to the membership
- The Library is open on all weekdays for private study and research by arrangement with the librarian

Activities of the Society

- Frequent one-day workshops organised by the Society's Special Interest Groups
- National Science Meeting annually – with a specialist international Symposium biennially
- Regional activities in all parts of the United Kingdom
- Postgraduate Forum
- *Antenna* – the house journal of the Society, sent free to the membership
- Each year the Society gives the Marsh Insect Conservation Award (prize £1,250), and other Awards (see website)
- In 2004 the Society launched 'National Insect Week' which is now a biennial event (see www.nationalinsectweek.co.uk)
- Annually the Society gives to a winning PhD thesis the "Wallace" Award
- Biennial Insect Festival

Publications

- The Society publishes seven internationally recognised scientific journals:

Agricultural and Forest Entomology

Ecological Entomology

Insect Conservation and Diversity

Insect Molecular Biology

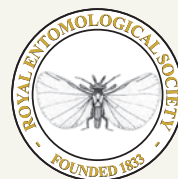
Medical and Veterinary Entomology

Physiological Entomology

Systematic Entomology

- Each year three of the journals will select the best paper that they have published over a two year period to receive a Society Academic Award, presented by the President of the Society.
- The Society's house journal *Antenna* contains reports on all Society Meetings and other activities; there are also articles, readers' correspondence and a Diary Section. *Antenna* also contains a Postgraduate Student section.

- *The Handbooks for the Identification of British Insects* is a continuing series of important works, as below; www.royensoc.co.uk/publications/handbooks



Royal Entomological Society
www.royensoc.co.uk

The Mansion House, Chiswell Green Lane,
St. Albans, Herts, AL2 3NS, UK

Tel: +44 (0)1727 899387

E-mail: info@royensoc.co.uk

I wish to subscribe to the following journals (please tick):

- Agricultural and Forest Entomology*
- Ecological Entomology*
- Insect Conservation and Diversity*
- Insect Molecular Biology*
- Medical and Veterinary Entomology*
- Physiological Entomology*
- Systematic Entomology*

Please send information about RES activities in the United Kingdom Regions (please tick):

- North West South & East
Northern Ireland Scotland

Applicants applying for Student Membership must include a letter from their Department/University confirming student status.

Discounted subscriptions are available to applicants from certain countries. Please refer to the Society website or the Registrar.

Methods of payment

Membership Subscription*

Journals' Subscriptions*

Total

* See website for current Membership fees and journal subscription rates

- Online payment – www.royensoc.co.uk/shop/annual-membership-renewal
- I enclose a cheque payable to the Royal Entomological Society
- I have set up a bank transfer to the Royal Entomological Society (see RES details above)
- I have provided credit card details below
- Please send details of Direct Debit payments for future subscription payments

Credit Card Details

Card No: Expiry date 3 digit security code

Cardholder's name: _____

Cardholder's address (if different from overleaf): _____

Signature _____ Date _____

RES details for bank transfer

Account: Royal Entomological Society
Bank: Lloyds Bank plc, St Albans Branch
Account number: 01921533
Sort code: 30-97-25
BIC: LOYDCGB21185
BAN: GB47 LOYD 3097 2501 9215 33