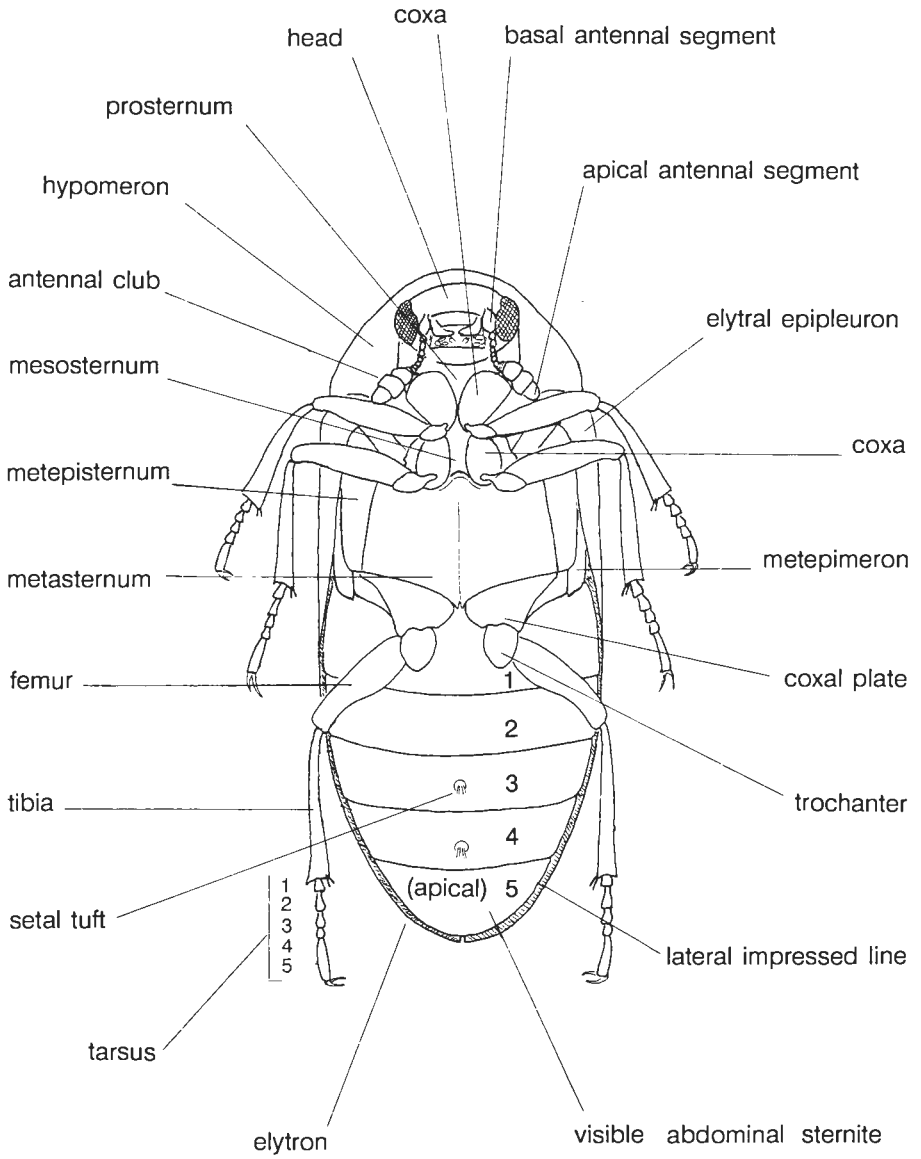
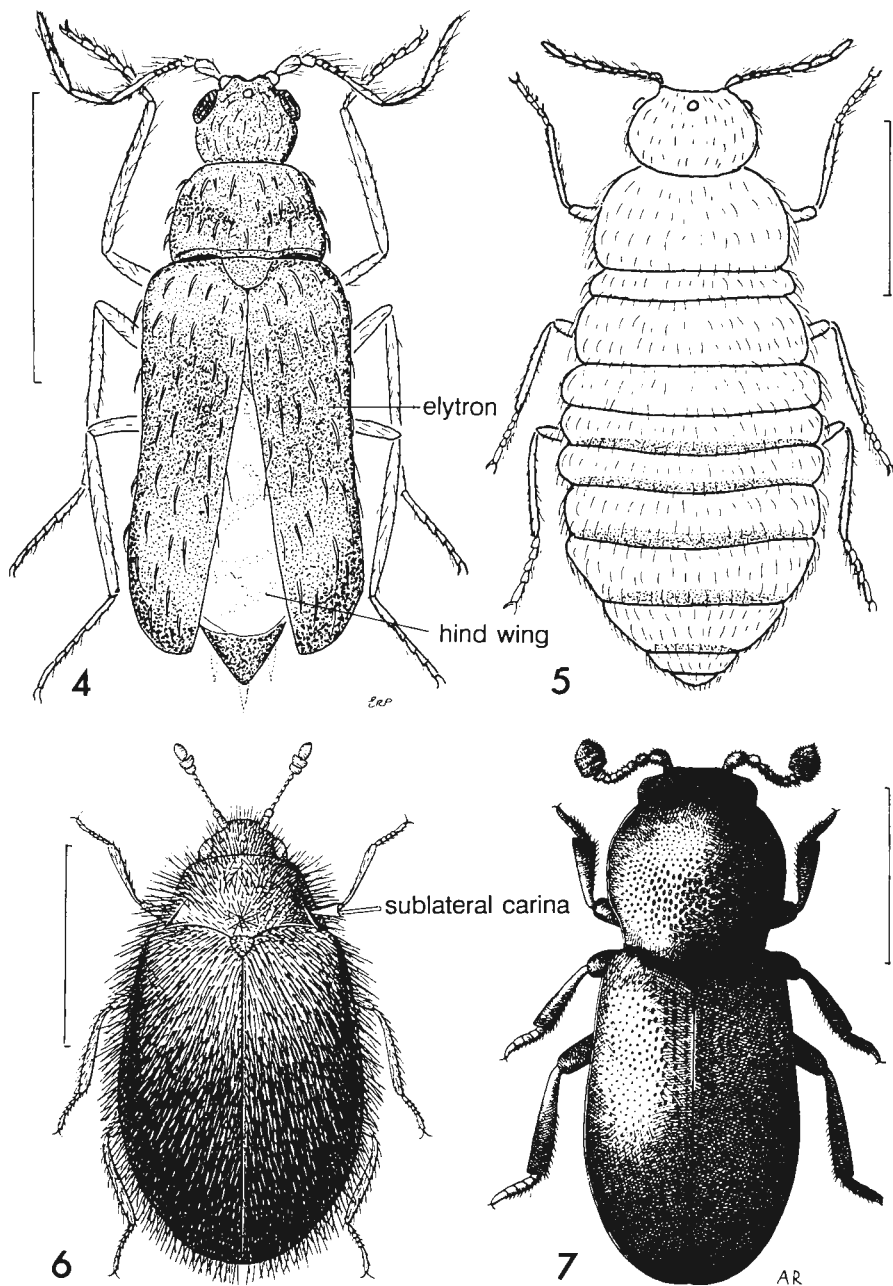


Figs 1-2. *Anthrenus* spp., to show labelled parts. 1, *A. fuscus*, dorsal view. 2, *A. verbasci*, ventral view.

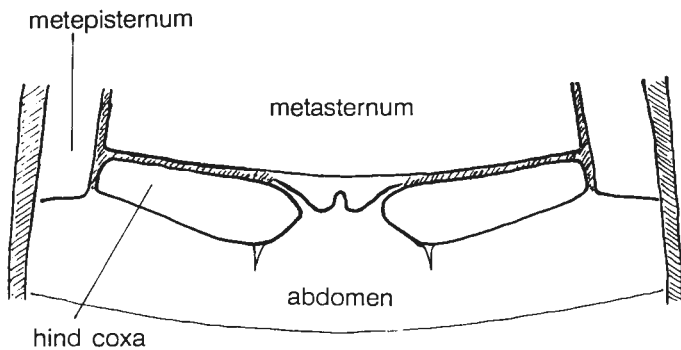


3

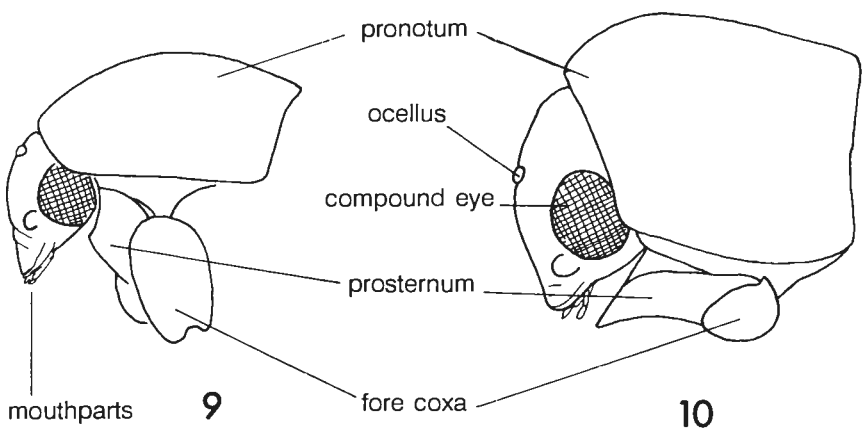
Fig. 3. Ventral view of *Dermestes* sp., to show labelled parts.



Figs 4-7. 4-5, *Thylocladius contractus*. 4, male. 5, female. 6, *Trinodes* sp., after Hinton (1945). 7, *Thorictodes heydeni*. Scale lines = 1.0 mm.



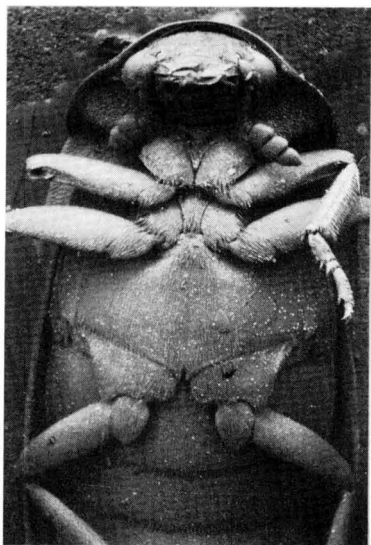
8



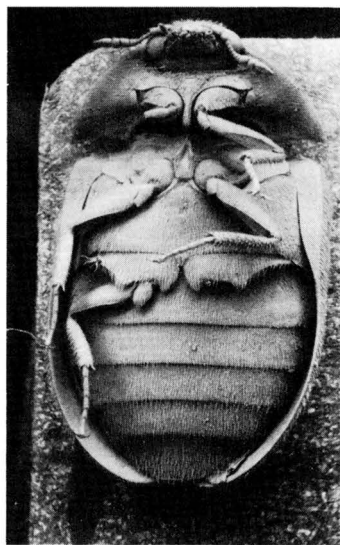
9

10

Figs 8-10. 8, diagram to show position of hind coxae of *Trinodes hirtus*. 9-10, side view of head and prothorax (appendages removed). 9, *Attagenus brunneus*. 10, *Megatoma undata*.



11



12

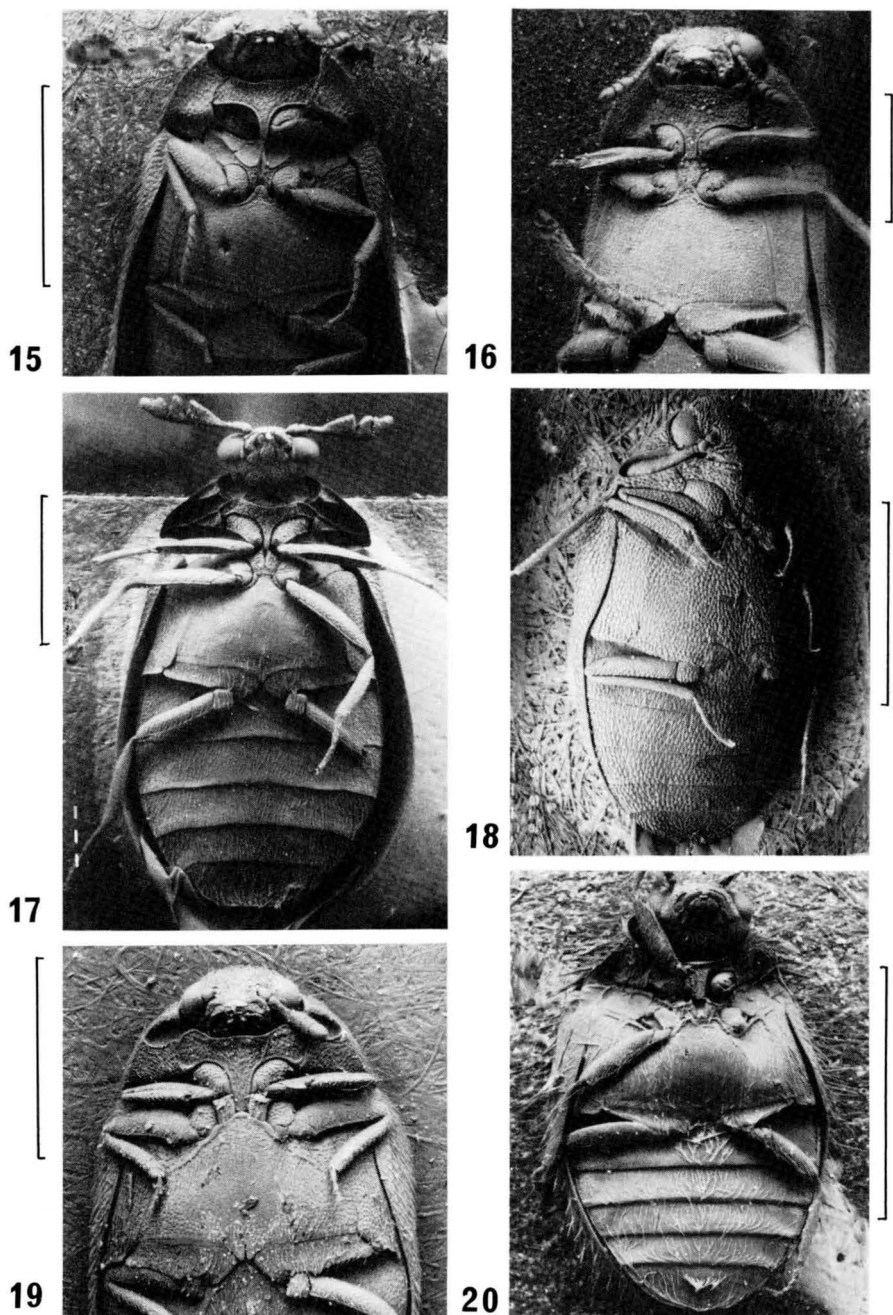


13

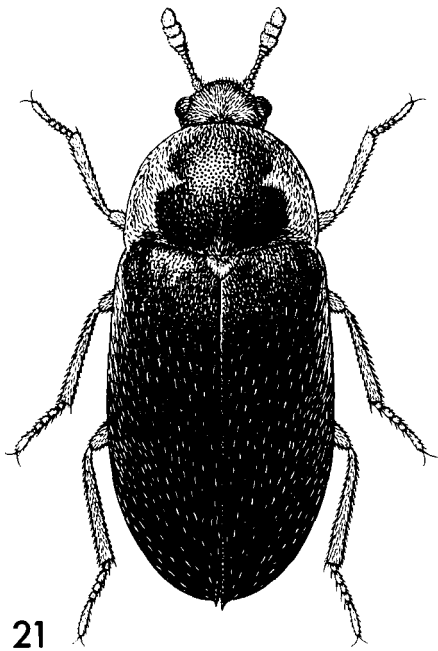


14

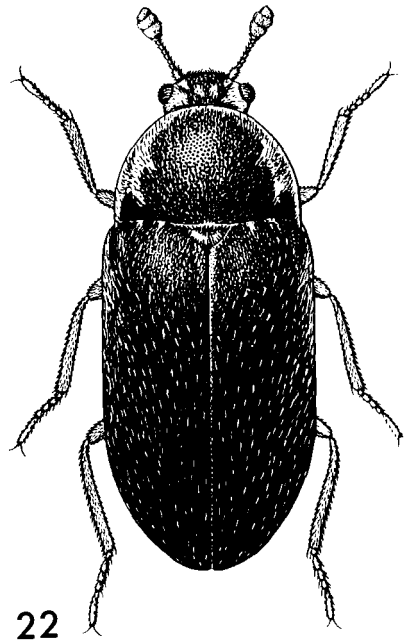
Figs 11–14. Ventral view of adult. 11, *Dermestes peruvianus*. 12, *Attagenus unicolor*. 13, *Trogoderma inclusum*. 14, *Reesa vespulae*. Scale lines = 1.0 mm.



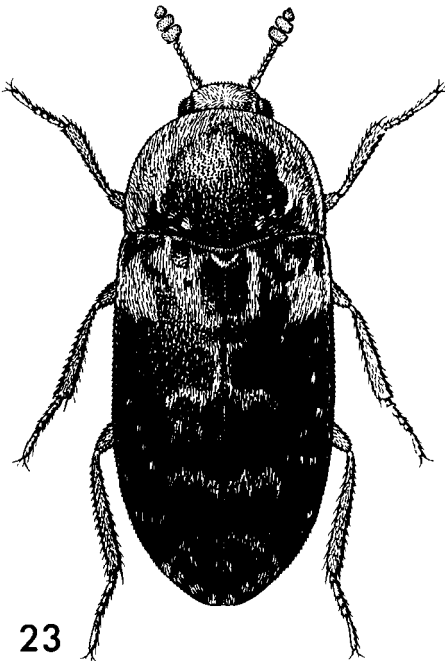
Figs 15–20. Ventral view of adult. 15, *Globicornis nigripes*. 16, *Megatoma undata*. 17, *Ctesias serra*. 18, *Anthrenus fuscus*. 19, *Anthrenocerus australis*. 20, *Trinodes hirtus*. Scale lines = 1.0 mm.



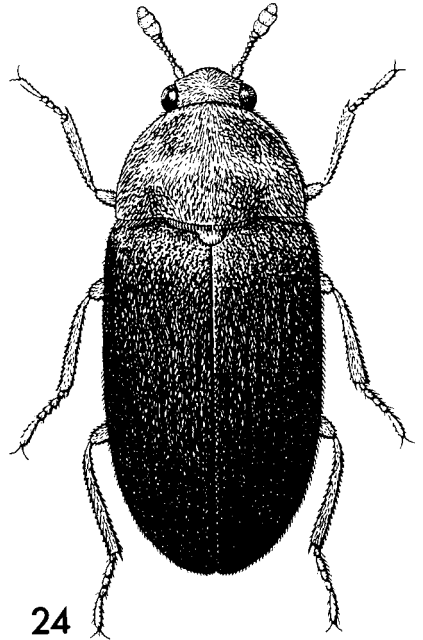
21



22

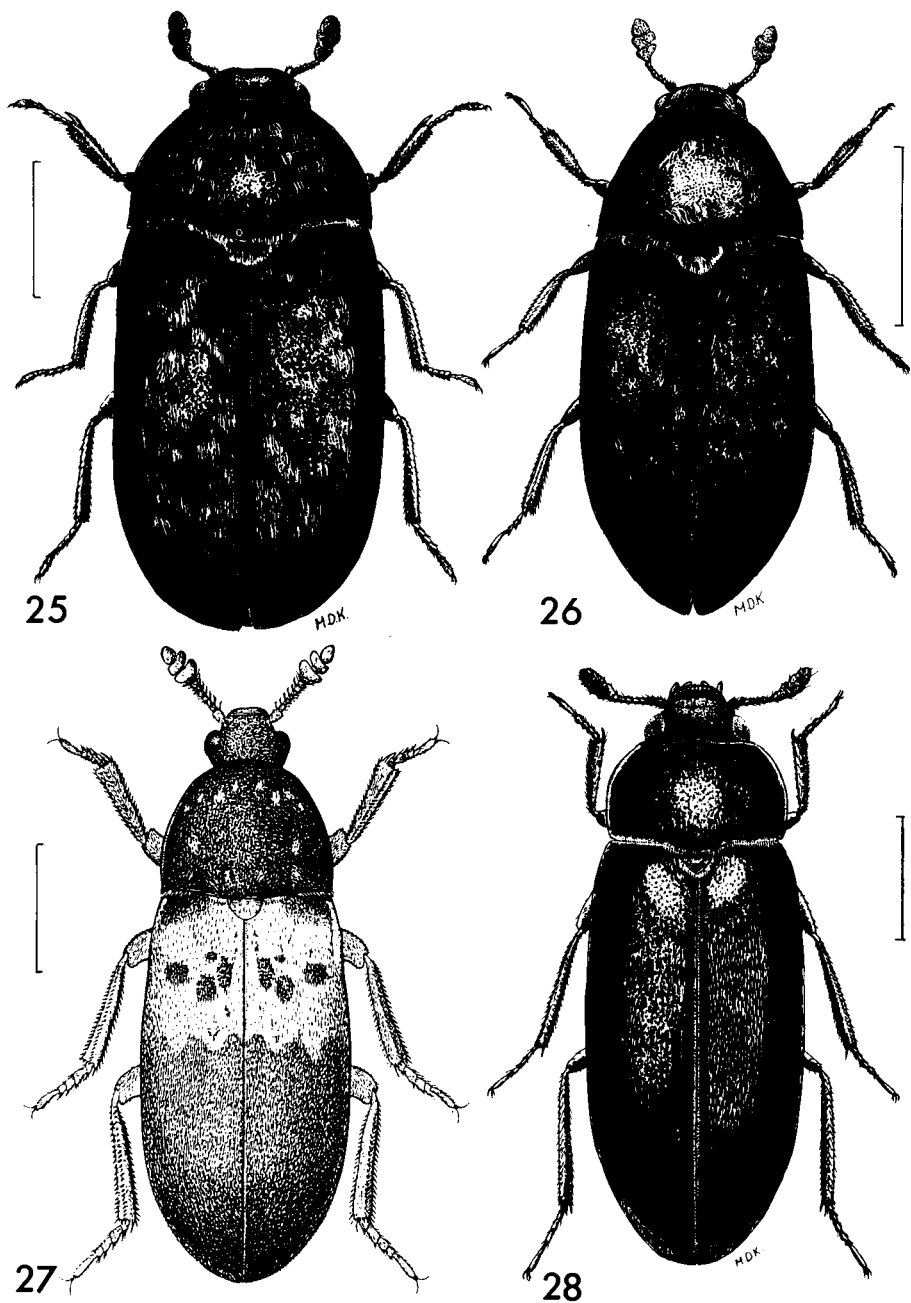


23

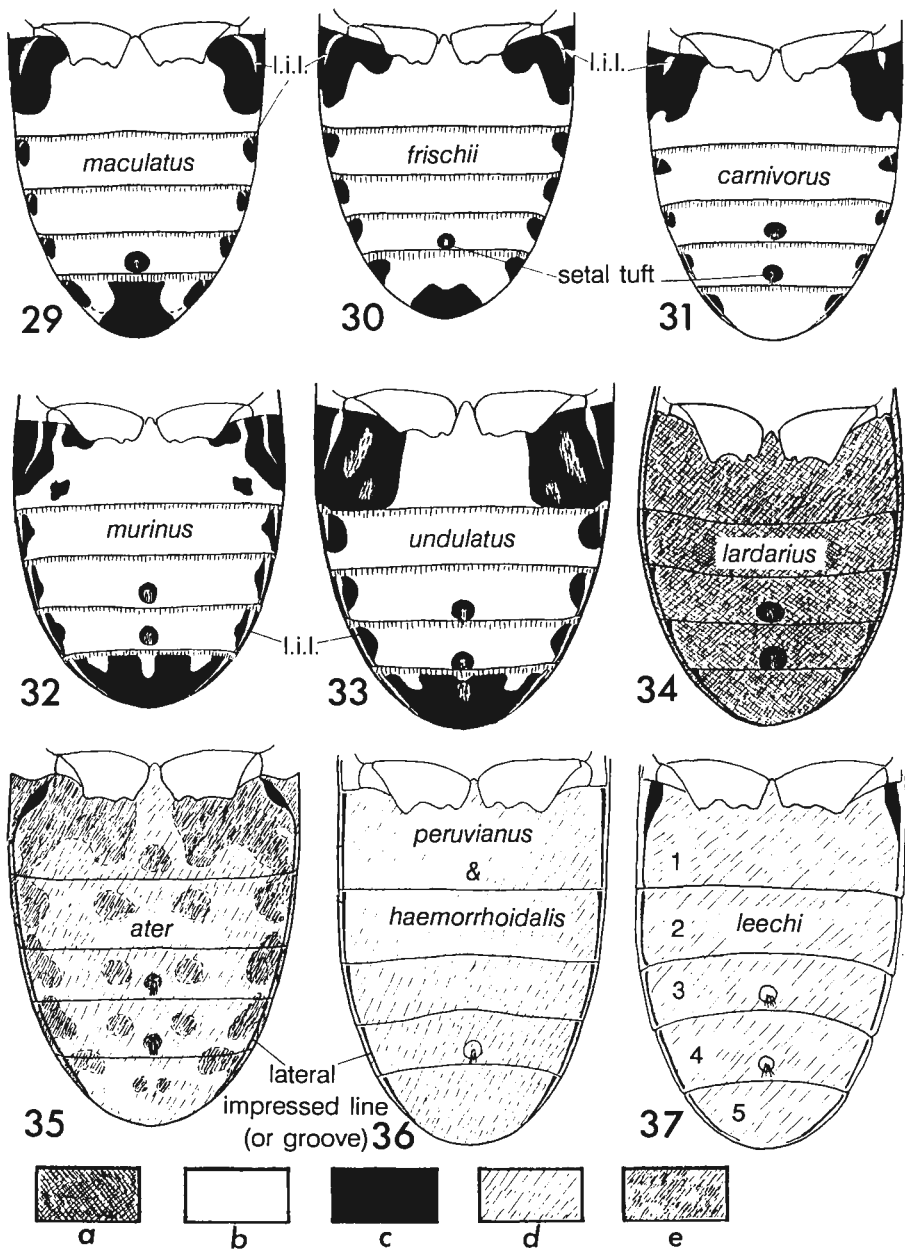


24

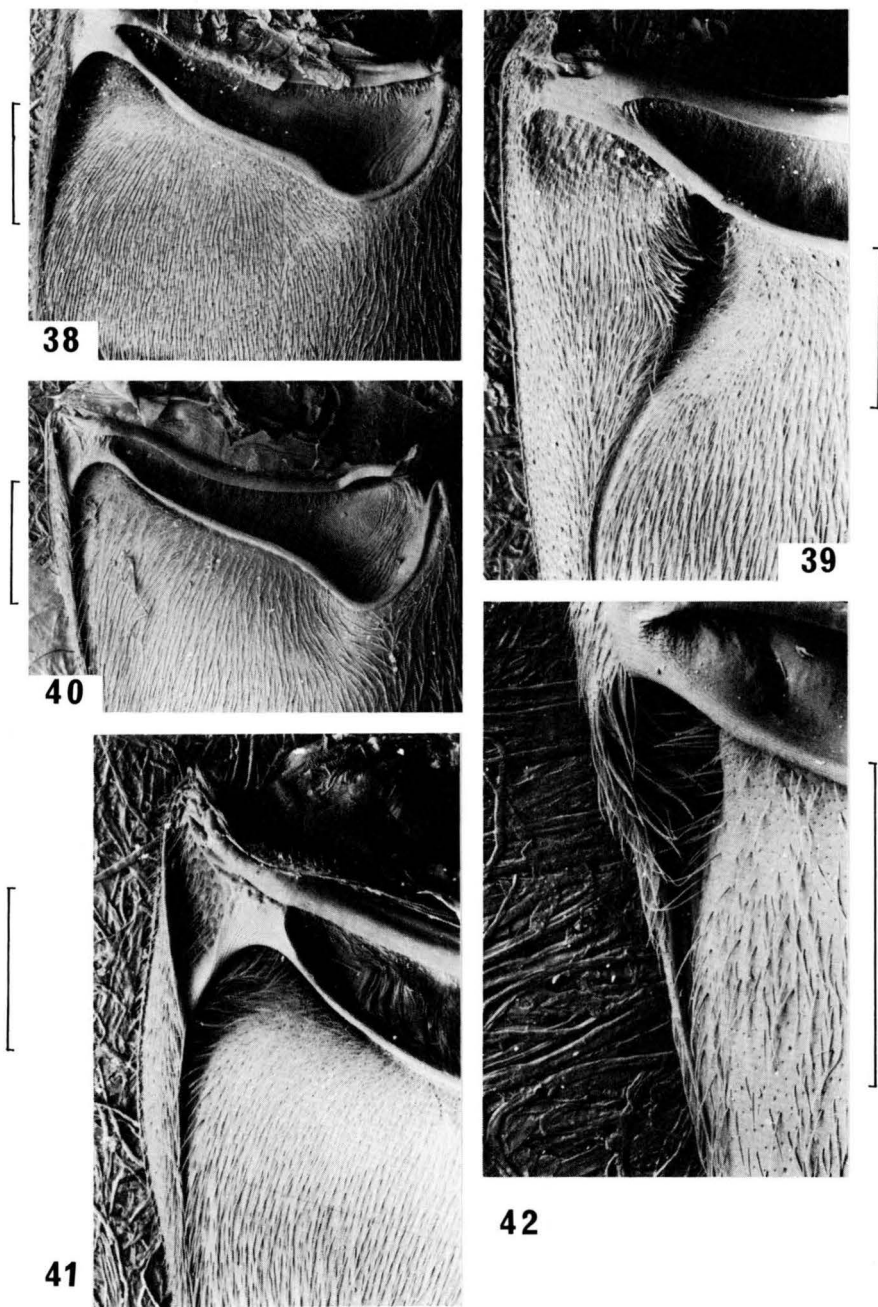
Figs 21–24. *Dermestes* spp. 21, *D. maculatus*. 22, *D. frischii*. 23, *D. carnivorus*. 24, *D. ater*. Scale line = 2.0 mm. All after Hinton (1945).



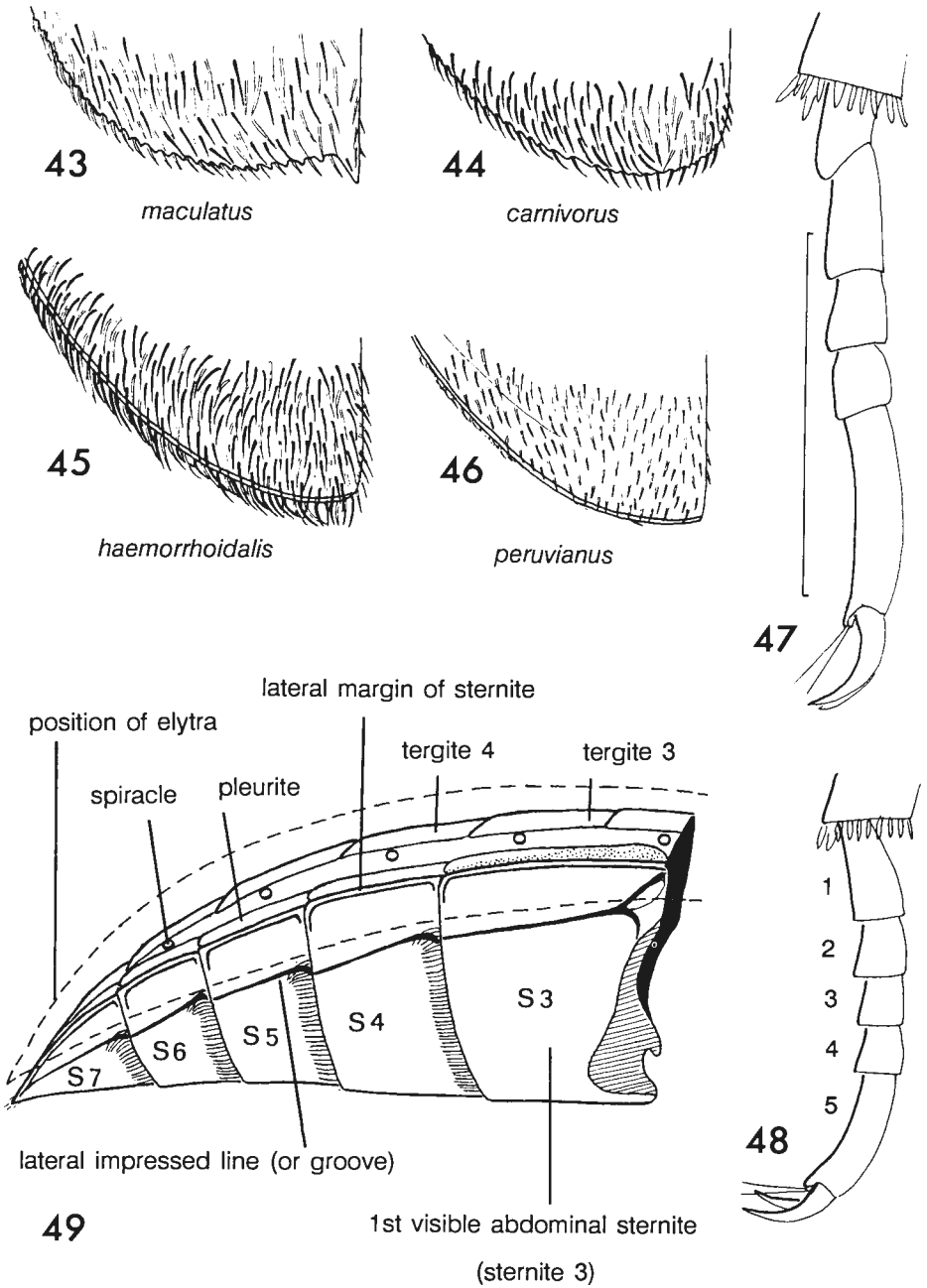
Figs 25–28. *Dermestes* spp. 25, *D. murinus*. 26, *D. undulatus*. 27, *D. lardarius*. 28, *D. peruvianus*.
 Fig. 27 after Hinton (1945); 25, 26, 28 original Kerley. Scale lines = 2.0 mm.



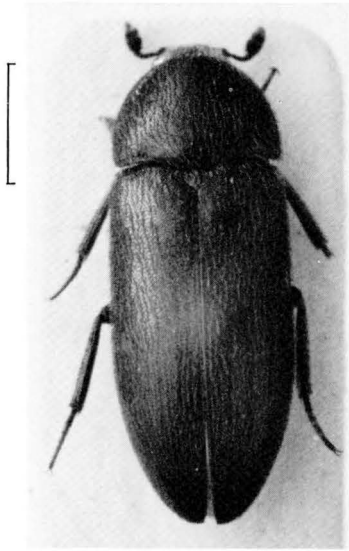
Figs 29–37. *Dermestes* spp., ventral view of abdomen of male to show colour patterns. Lateral impressed lines (l.i.l.) indicated in black or white. *a*, almost black or reddish-brown pubescence on similarly coloured derm; *b*, ash-white pubescence masking black derm; *c*, black pubescence on black derm; *d*, pale yellowish pubescence on reddish-brown derm; *e*, dark brown pubescence on dark reddish-brown derm. Figs 29–36 after Peacock (1976).



Figs 38–42. *Dermestes* spp. Anterior part of right side of 1st visible abdominal sternite, showing lateral impressed line or groove. 38, *lardarius*. 39, *ater*. 40, *haemorrhoidalis*. 41, *peruvianus*. 42, *leechi*. Scale lines = 0.4 mm.

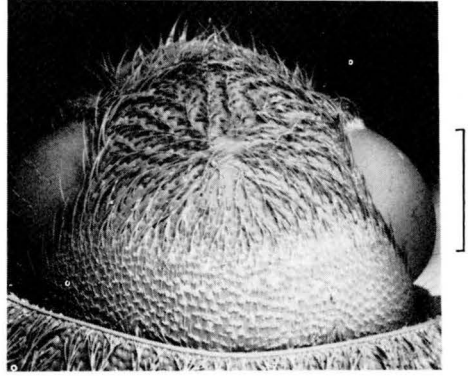


Figs 43–49. *Dermestes* spp. 43–46, apex of left elytron. 47–48, hind tarsus (setae omitted). 47, *D. peruvianus*. 48, *D. leechi*. 49, side view of abdomen (elytra removed). Scale line = 1.0 mm. Figs 43–46, 49 after Peacock (1976).

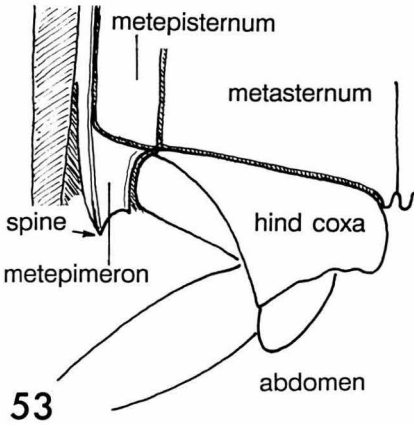
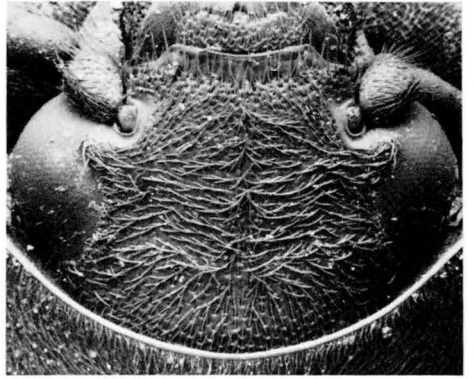


50

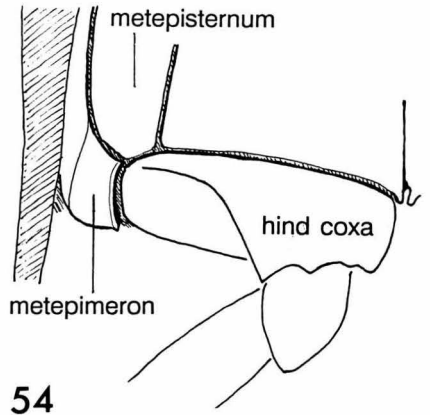
51



52

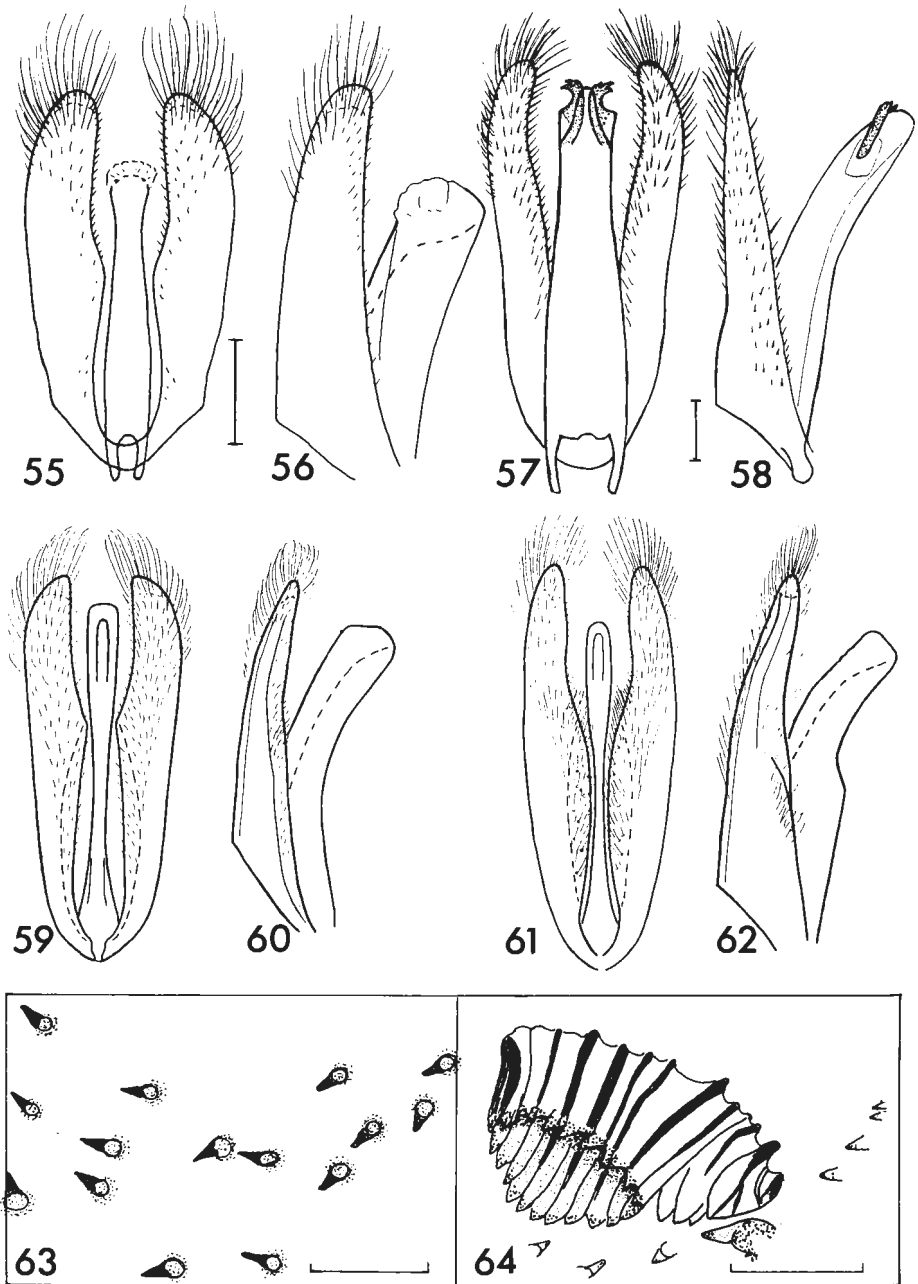


53

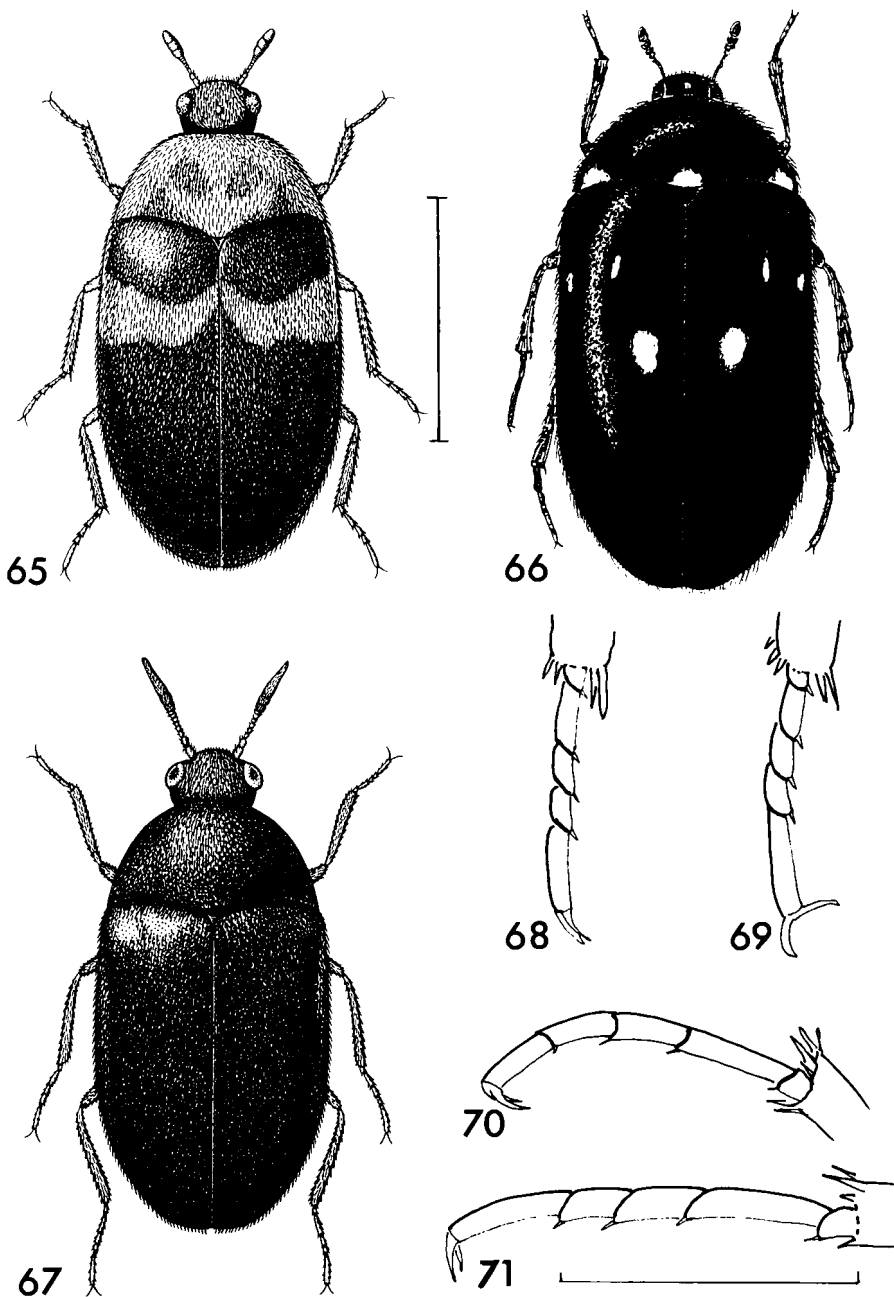


54

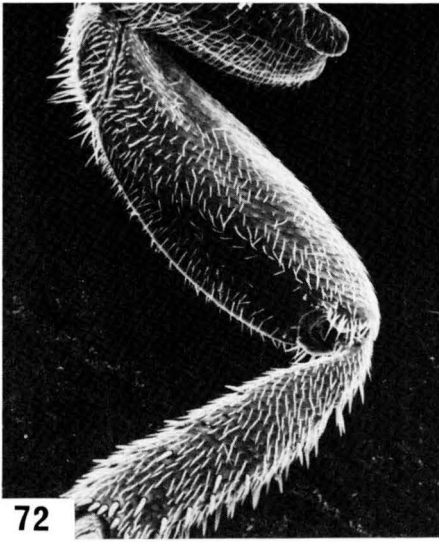
Figs 50–54. *Dermestes* spp. 50, *D. leechi*, scale line = 2.0 mm. 51–52, head. 51, *D. haemorrhoidalis*. 52, *D. peruvianus*, scale line = 0.4 mm. 53–54, posterior part of thorax, ventral view, to show right metepimeron. 53, *D. haemorrhoidalis*. 54, *D. peruvianus*, (setae removed).



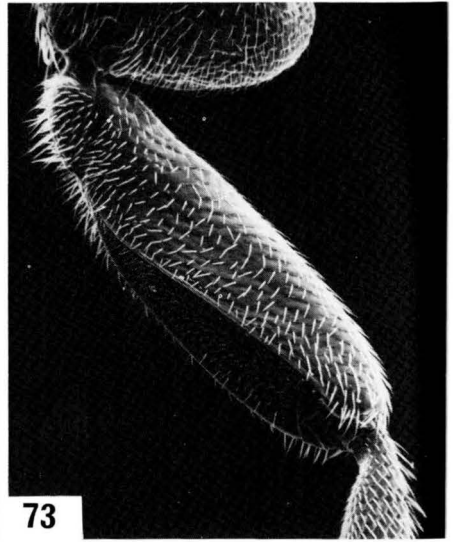
Figs 55–64. 55–62, *Dermestes* spp. Male genitalia, dorsal and lateral views. 55–56, *D. leechi*. 57–58, *D. ater*. 59–60, *D. haemorrhoidalis*. 61–62, *D. peruvianus*. 63–64, chitinized structures in the bursa copulatrix of female. 63, *D. leechi*. 64, *D. haemorrhoidalis*. Figs 59–62 after Peacock (1976). Scale lines = 0.2 mm.



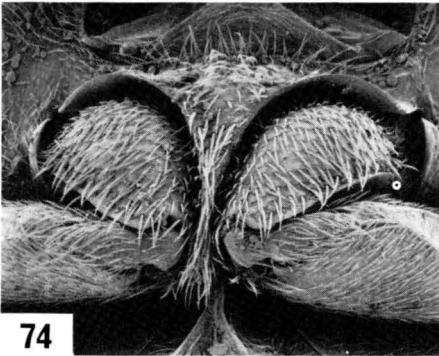
Figs 65-71. *Attagenus* spp. 65-67, dorsal view. 65, *A. fasciatus*. 66, *A. pellio*. 67, *A. unicolor*. 68-69, fore tarsus. 70-71, hind tarsus. 68, 70, *A. cyphonoides*. 69, 71, *A. smirnovi*. Figs 65, 67, after Hinton (1945). Scale line for figs 65-67 = 2.0 mm; for 68-71 = 0.5 mm.



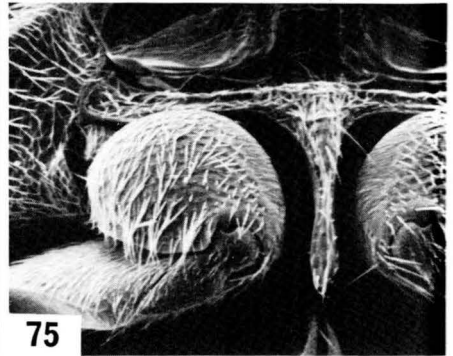
72



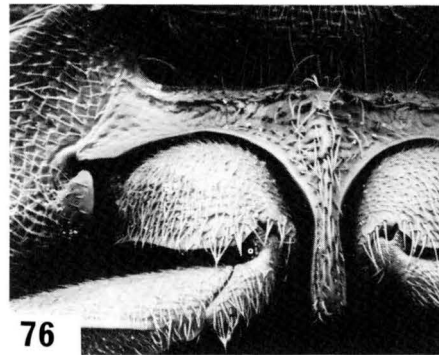
73



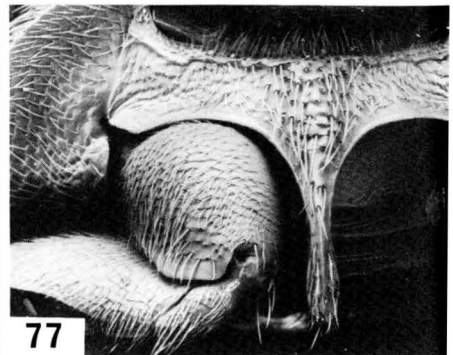
74



75

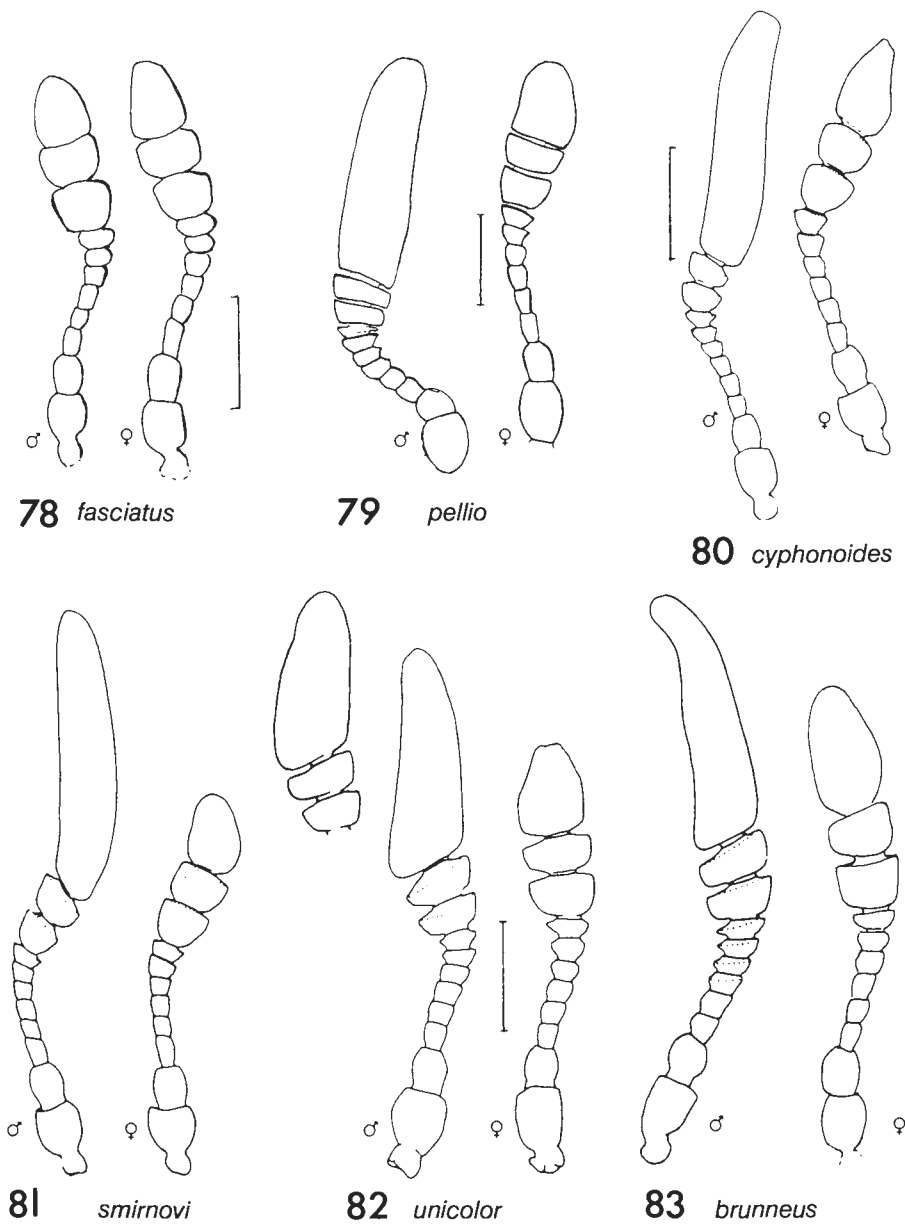


76

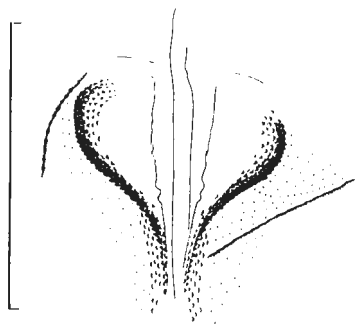


77

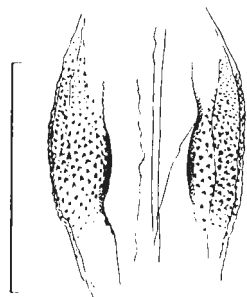
Figs 72–77. *Attagenus* spp. 72–73, right middle femur, posteroventral view. 72, *A. smirnovi*. 73, *A. unicolor*. 74–77, ventral view of prothorax. 74, *A. cyphonoides*. 75, *A. smirnovi*. 76, *A. unicolor*. 77, *A. brunneus*. Fig. 74 after Halstead (1981). Scale lines = 0.2 mm.



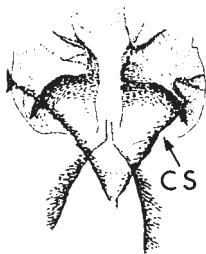
Figs 78–83. *Attagenus* spp., antennae (setae omitted). Figs 80–83 (male) after Halstead (1981).
 Scale line = 0.2 mm.



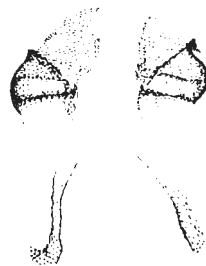
84 *cyphonoides*



85 *smirnovi*

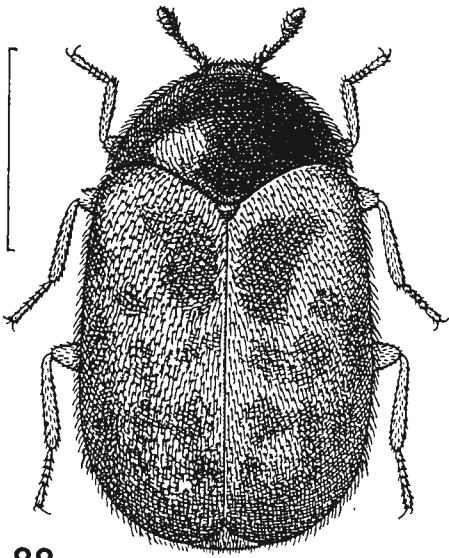


86 *unicolor*



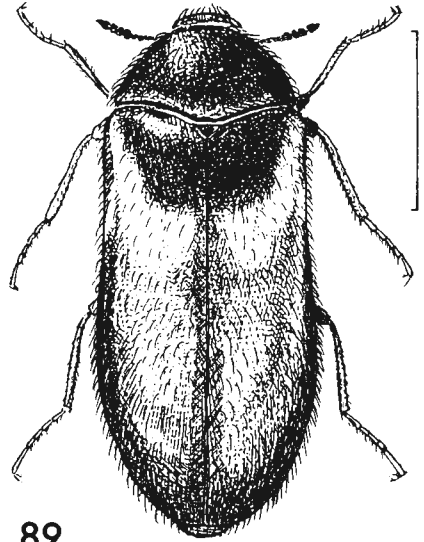
87 *brunneus*

Figs 84–87. *Attagenus* spp., bursa copulatrix in female genitalia. cs = convergent struts. After Halstead (1981). Scale line = 0.2 mm.



88

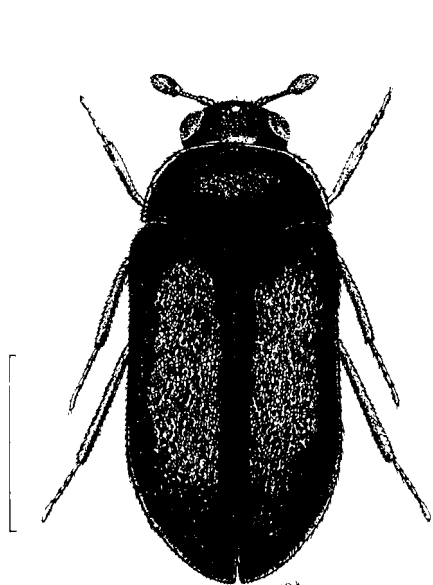
Trogoderma granarium



89

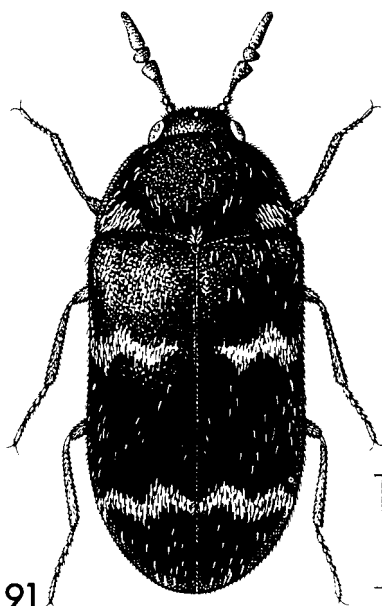
Reesa vespulae

Figs 88–89. Megatominae, dorsal view. Fig. 88, by permission of ADAS, Central Science Laboratory. Fig. 89 adapted from Beal (1967). Scale line = 1.0 mm.



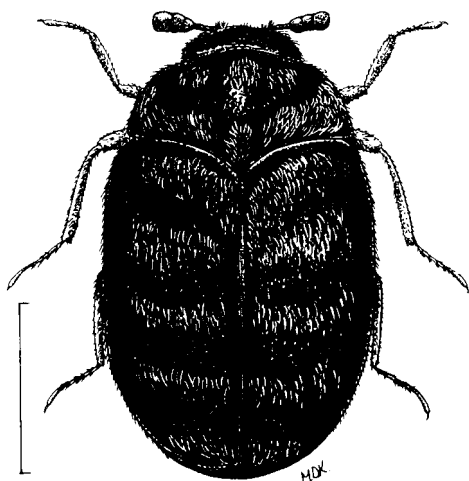
90

Globicornis nigripes



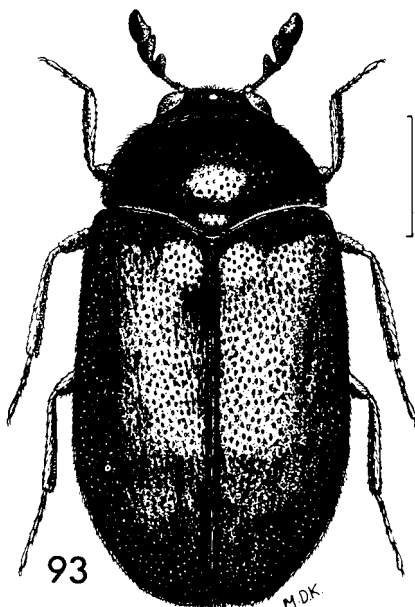
91

Megatoma undata



92

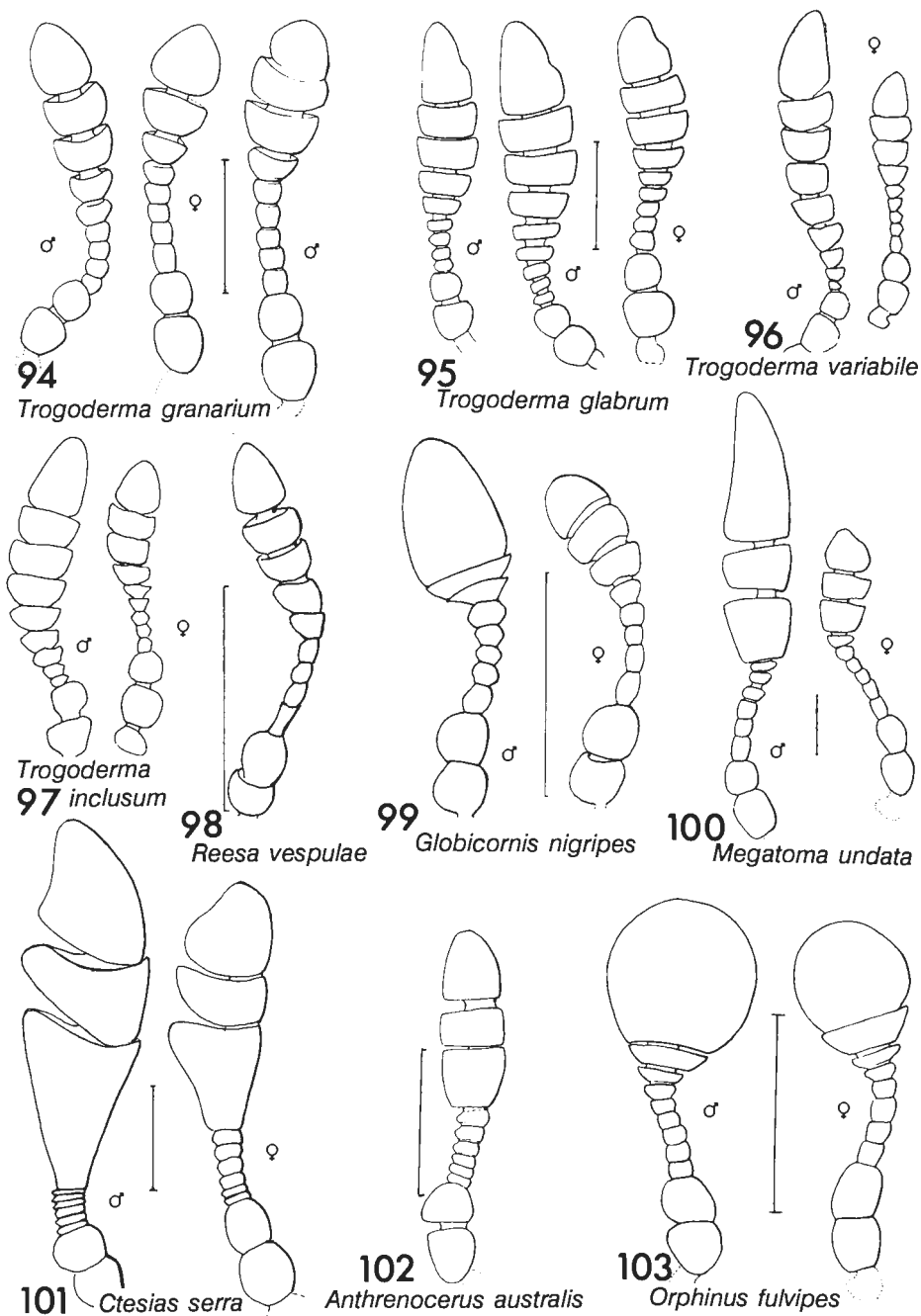
Anthrenocerus australis



93

Ctesias serra

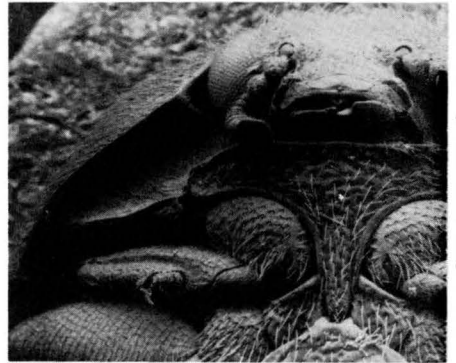
Figs 90-93. Megatominae, dorsal view. Fig. 91 after Hinton (1945); 90, 92, 93 original Kerley.
Scale lines = 1.0 mm.



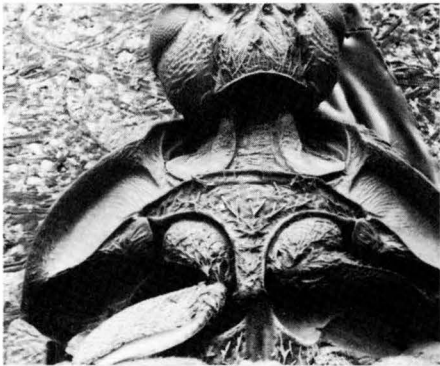
Figs 94–103. Megatominae, antennae (setae omitted). Figs 94, 95, 100–103 after Hinton (1945). Scale lines = 0.2 mm.



104



105



106



107

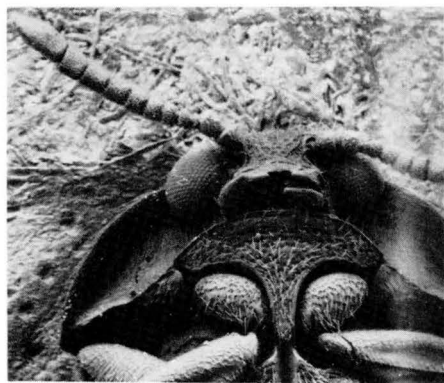


108



109

Figs 104–109. Megatominae: *Trogoderma* spp., prosternum and hypomeron, showing antennal cavity. 104, *glabrum* ♂. 105, *glabrum* ♀. 106, *inclusum* ♂. 107, *inclusum* ♀. 108, *granarium* ♂. 109, *granarium* ♀. Scale lines = 0.4 mm.



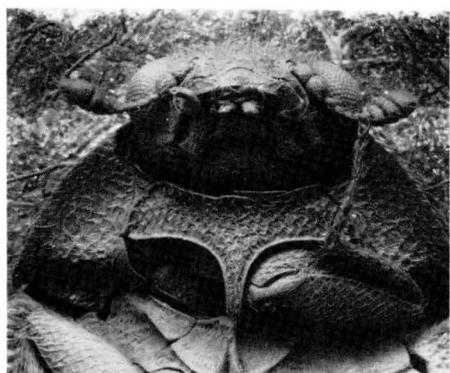
110



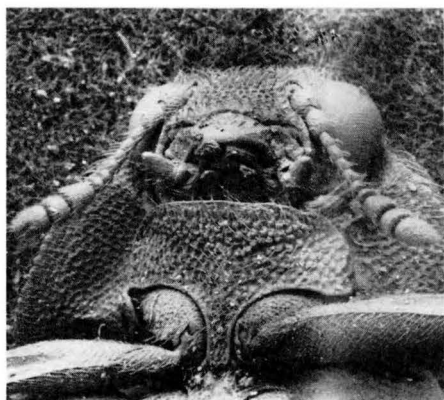
111



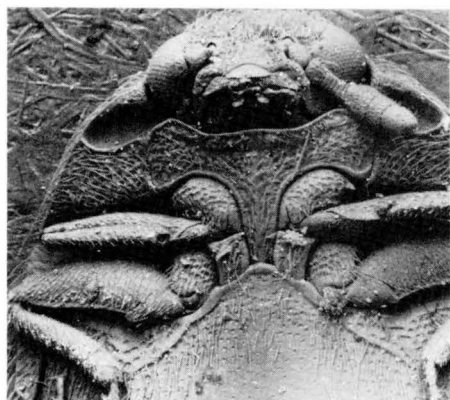
112



113

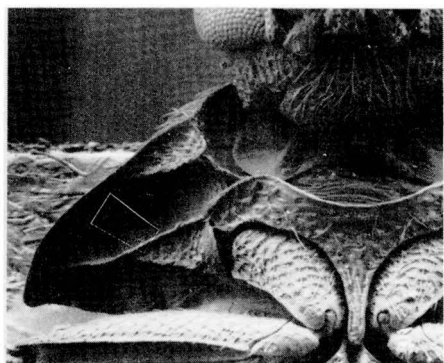


114

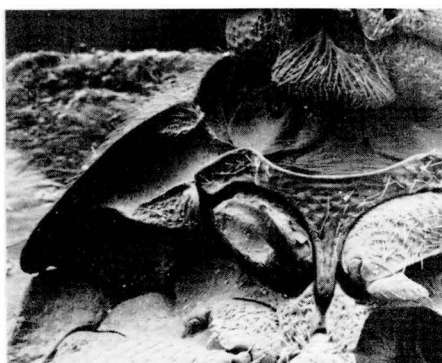


115

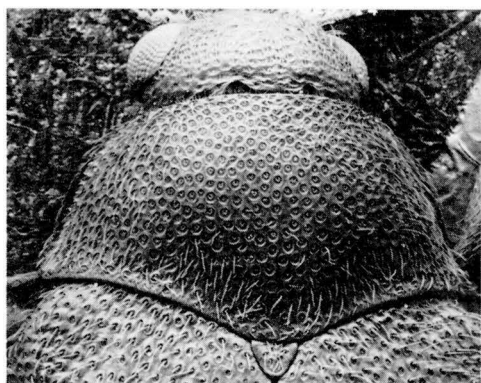
Figs 110–115. Megatominae, prosternum and hypomeron, showing antennal cavity or depression. 110, *Trogoderma variable* ♂. 111, *T. variable* ♀. 112, *Reesa vespulae*. 113, *Globicornis nigripes*. 114, *Megatoma undata*. 115, *Anthrenocerus australis*. Scale lines = 0.4 mm.



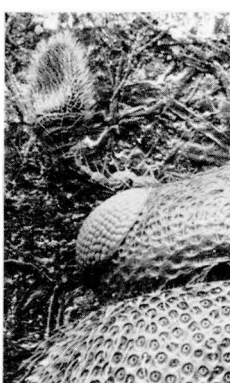
116



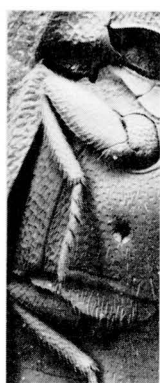
117



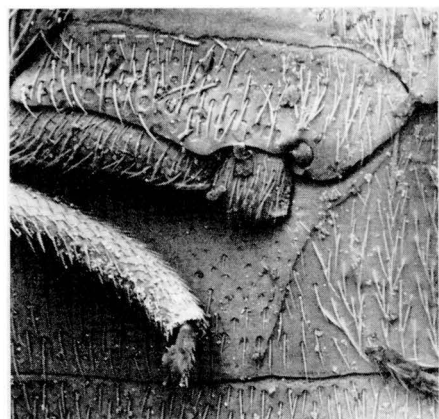
118



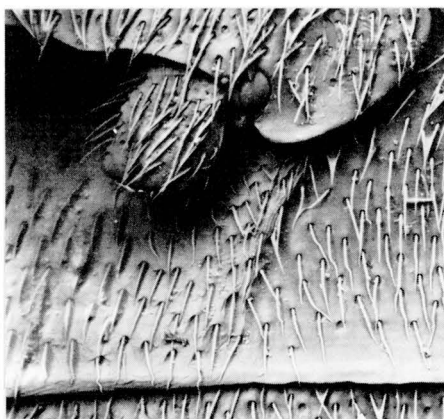
119



120



121



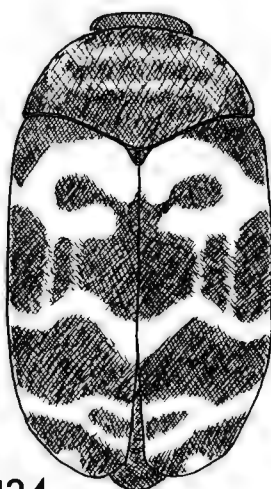
122

Figs 116–122. Megatominae. 116–117, *Ctesias serra*, prosternum and antennal cavity. 116, male. 117, female. 118–120, *Glocicornis nigripes*. 118, pronotum. 119, antenna. 120, middle tarsus. 121–122, middle part of 1st visible abdominal sternite, showing postcoxal line. 121, *Anthrenocerus australis*. 122, *Trogoderma inclusum*. Scale lines = 0.2 mm.



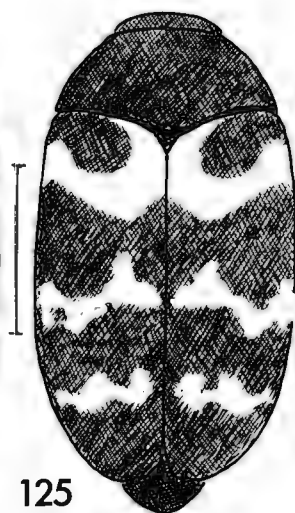
123

glabrum



124

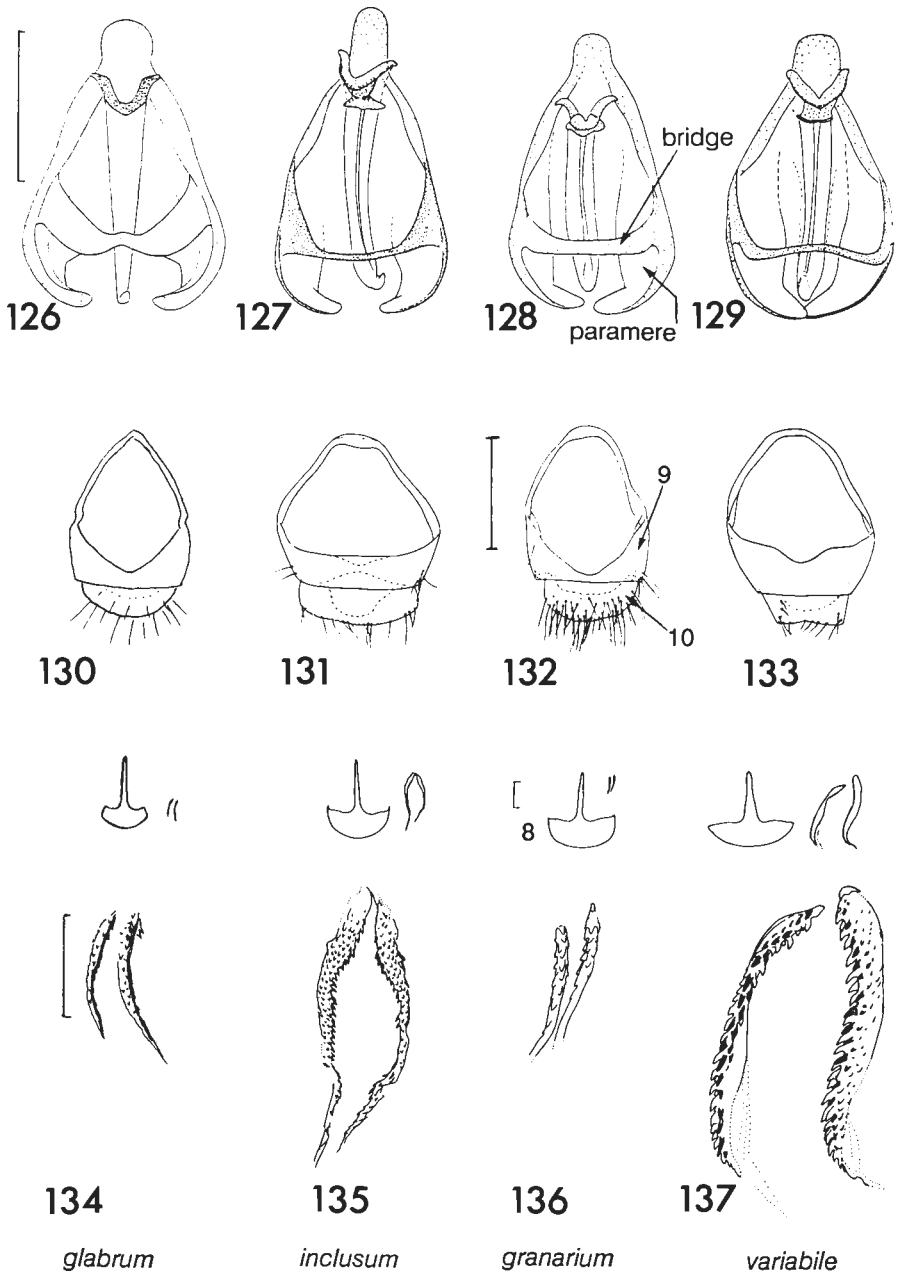
inclusum



125

variabile

Figs 123–125. *Trogoderma* spp. Diagrams to show body shape and cuticular pattern (setae omitted). Scale line = 1.0 mm.



Figs 126–137. *Trogoderma* spp. 126–129, male genitalia (setae omitted). 130–133, tergites 9 and 10 of male. 134–137, sclerites in bursa copulatrix of female, size compared with sternite 8. 126, 130, 134, *T. glabrum*. 127, 131, 135, *T. inclusum*. 128, 132, 136, *T. granarium*. 129, 133, 137, *T. variabile*. Figs after Green (1979), except 126, 130 and 134. Scale lines = 0.2 mm.

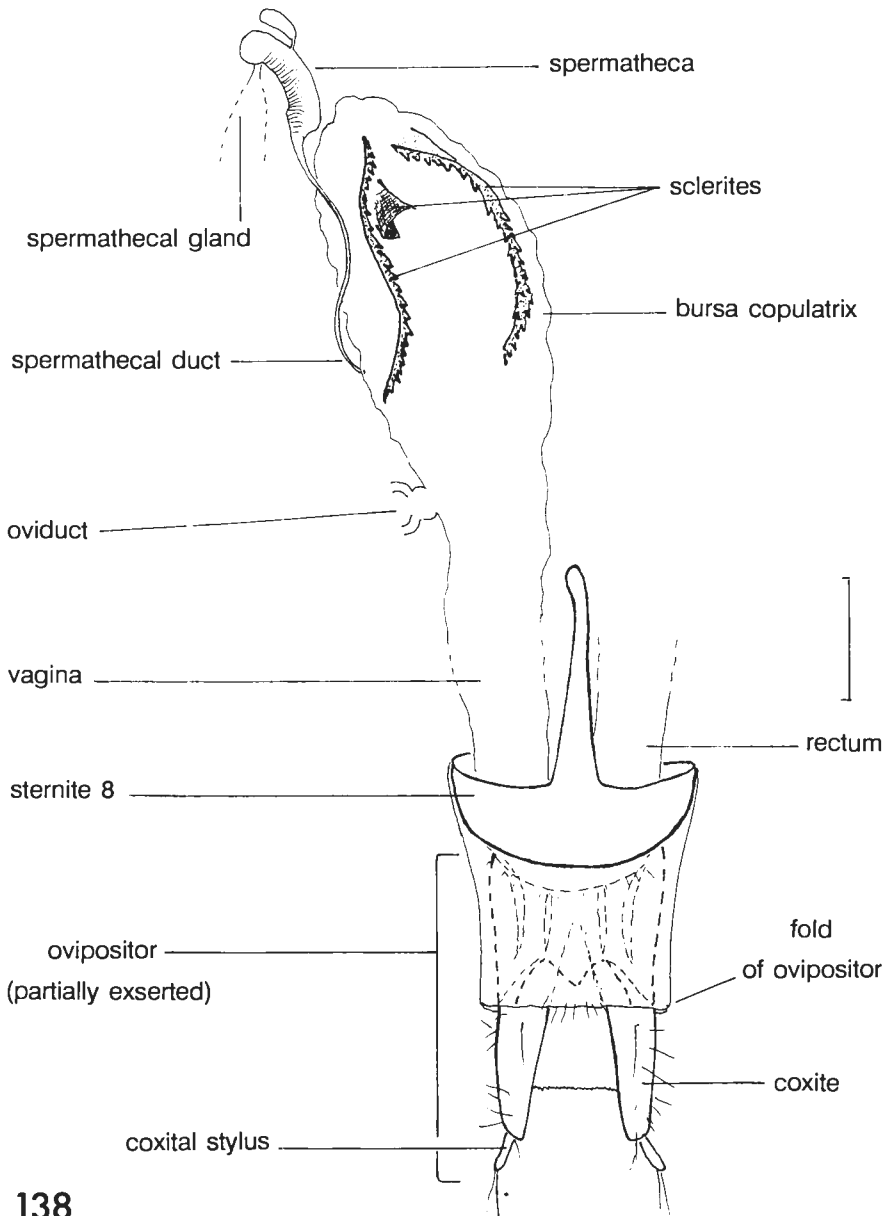
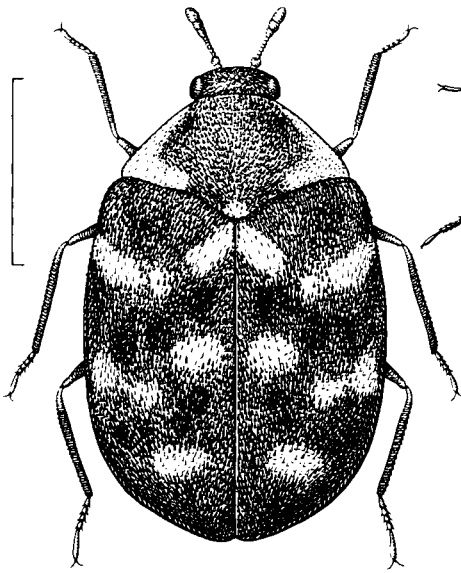
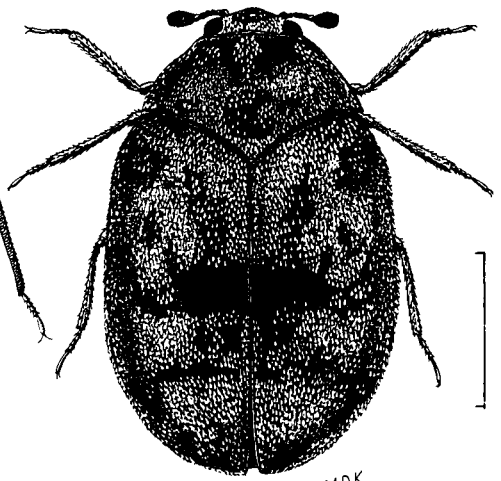


Fig. 138. *Trogoderma variabile*, diagram to show position of bursa copulatrix in female genitalia, ventral view. Scale line = 0.2 mm.



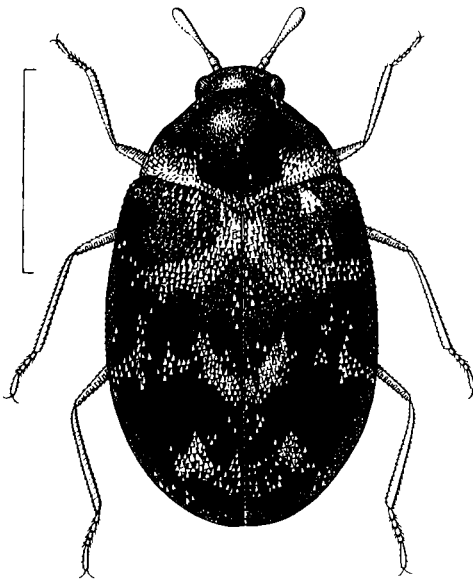
139

verbasci



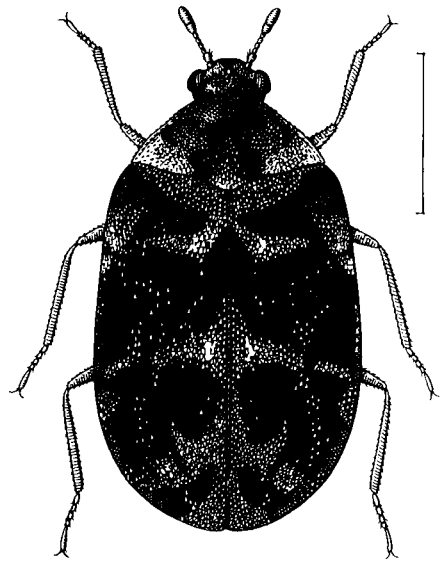
140

sarnicus



141

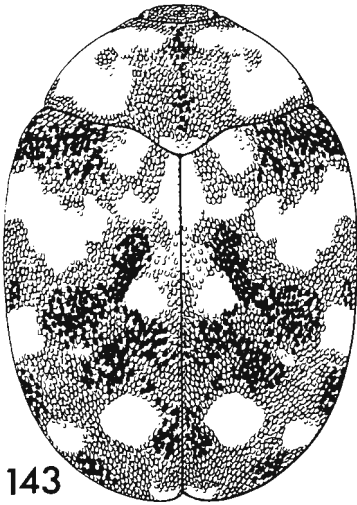
fuscus



142

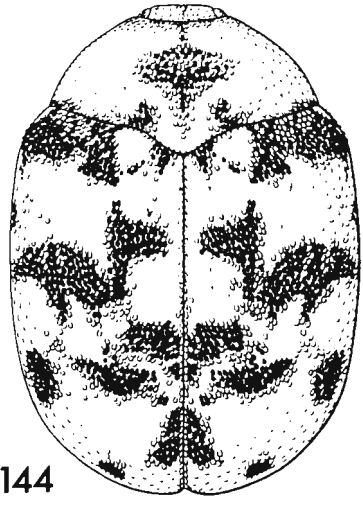
museorum

Figs 139–142. *Anthrenus* spp., dorsal view to show scale patterns. Fig. 140 original Kerley; remainder after Hinton (1945). Scale lines = 1.0 mm.



143

flavipes



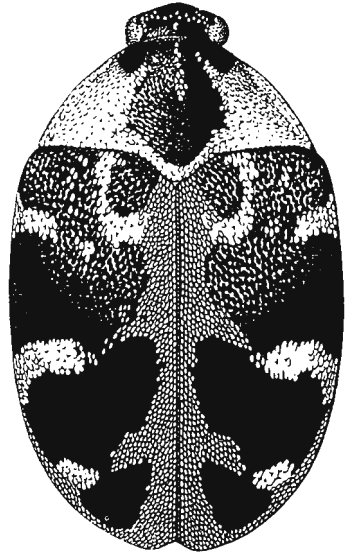
144

flavipes var. *seminivius* Casey



145

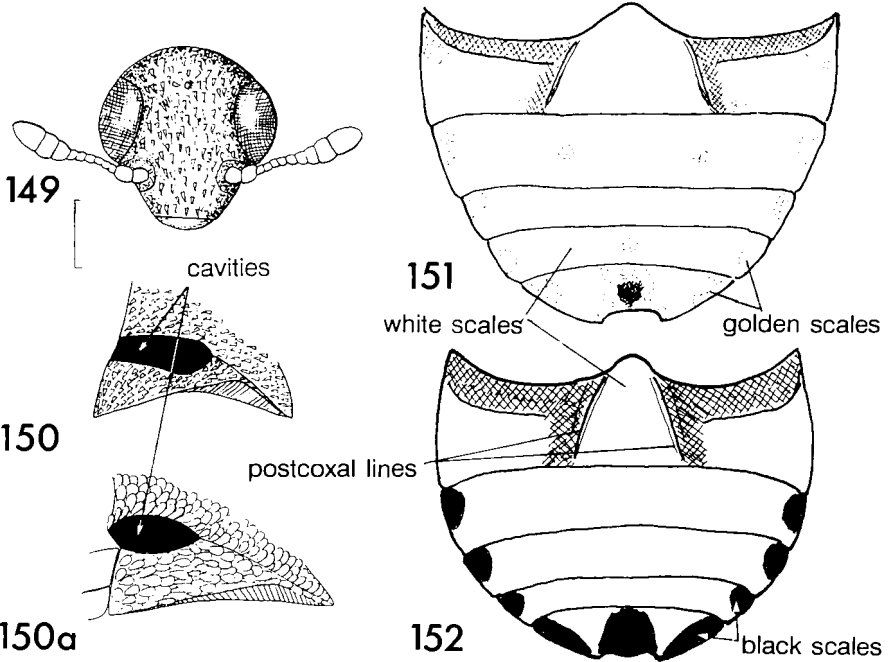
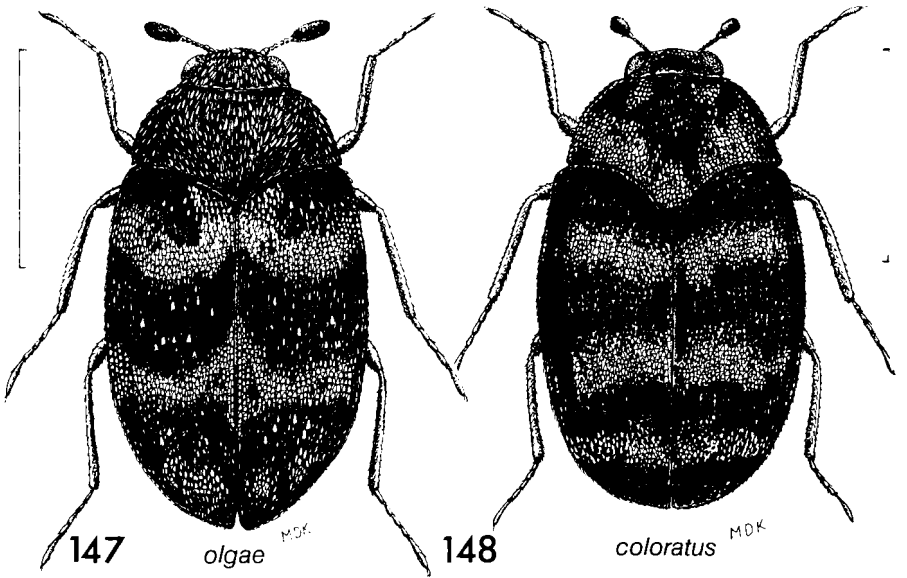
pimpinellae



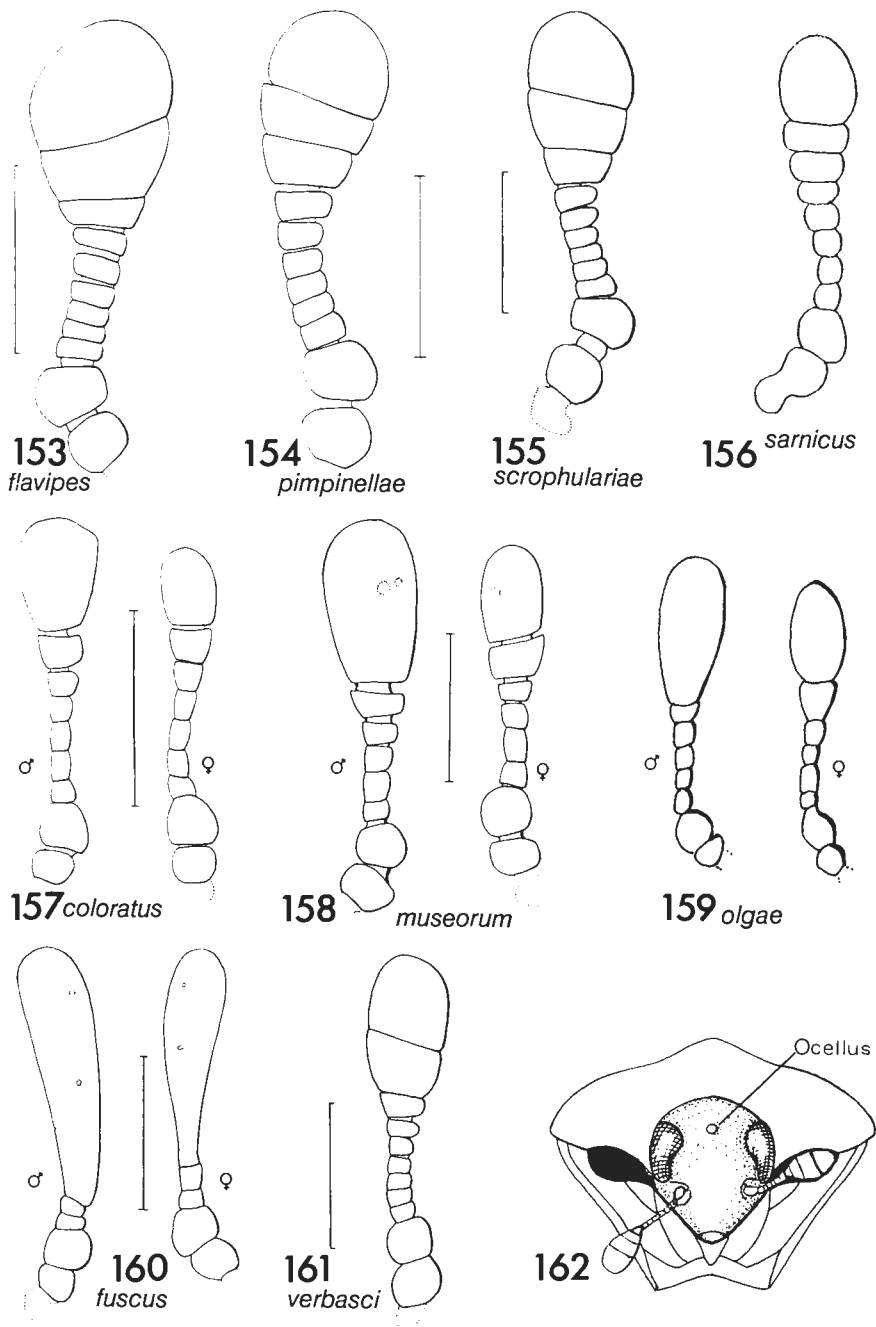
146

scrophulariae

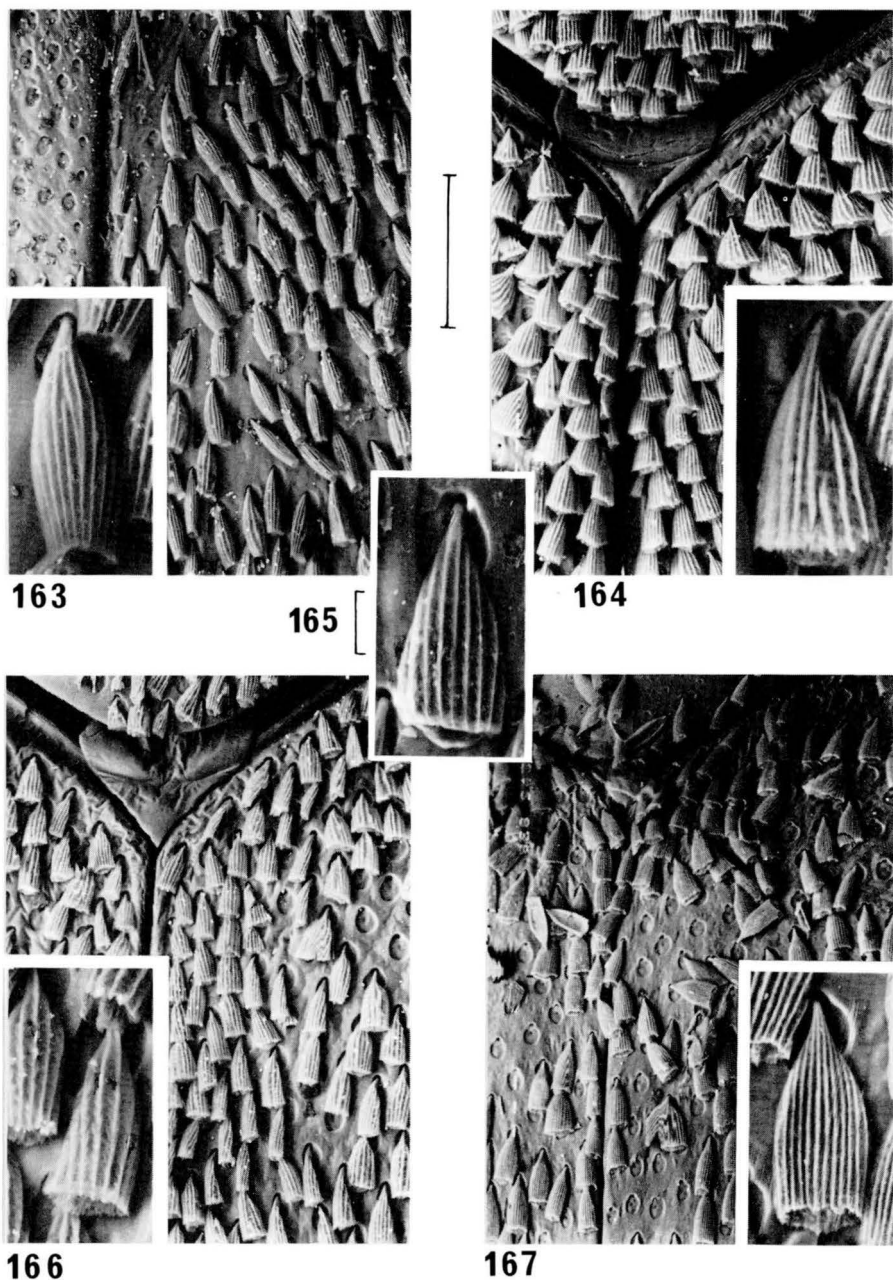
Figs 143–146. *Anthrenus* spp., dorsal view to show scale patterns (appendages omitted). After Hinton (1945). Scale lines = 1.0 mm.



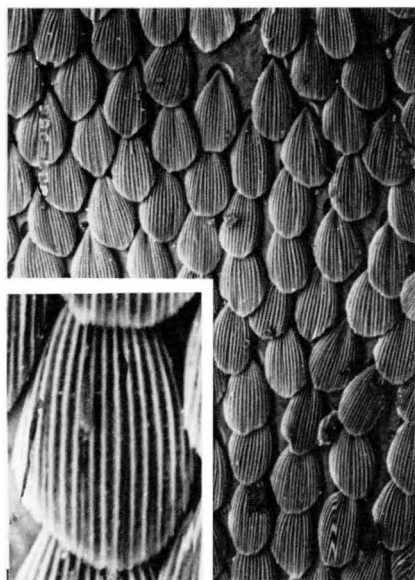
Figs 147–152. *Anthrenus* spp. 147–148, dorsal view to show scale patterns. 149, head of *A. verbasci*, seen from front. 150–150a, side view of pronotum and hypomeron, showing antennal cavities. 150, *A. verbasci*. 150a, *A. flavipes*. 151–152, ventral view of abdomen to show scale patterns. 151, *A. flavipes*. 152, *A. scrophulariae*. Figs 147–148 original Kerley, scale line = 1.0 mm.; 149–150a after Hinton (1945), scale line = 0.2 mm.



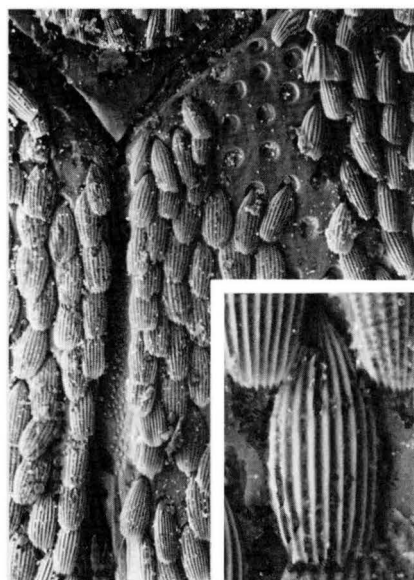
Figs 153–162. *Anthrenus* spp. 153–161, antennae (setae omitted). 162, *A. scrophulariae*, seen from front. All after Hinton (1945) except 156, 159. Scale lines = 0.2 mm.



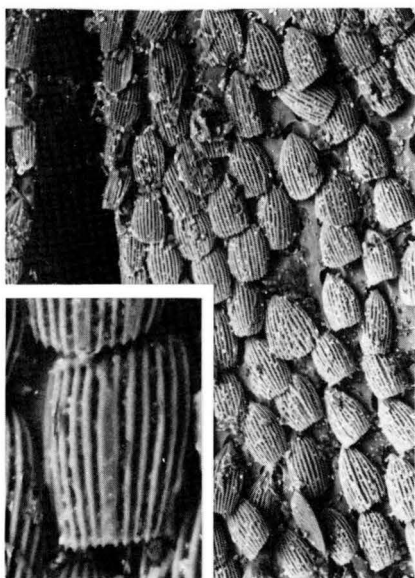
Figs 163–167. *Anthrenus* spp., elytral scales. 163, *verbasci*. 164, *sarnicus*. 165, *museorum*. 166, *fuscus*. 167, *olgae*. Scale line = 0.1 mm; inset scale line = 0.01 mm.



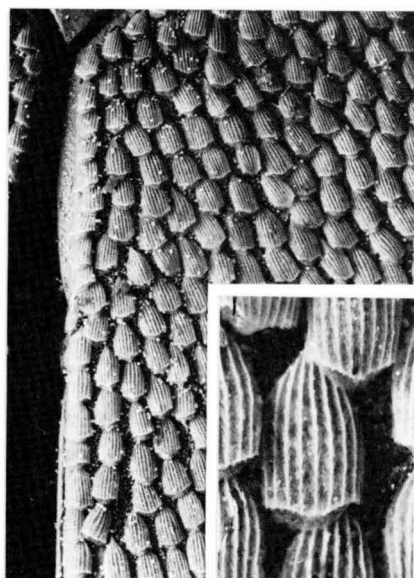
168



169



170



171

Figs 168–171. *Anthrenus* spp., elytral scales. 168, *flavipes*. 169, *pimpinellae*. 170, *scrophulariae*. 171, *coloratus*. Scale line = 0.1 mm; inset scale line = 0.01 mm.

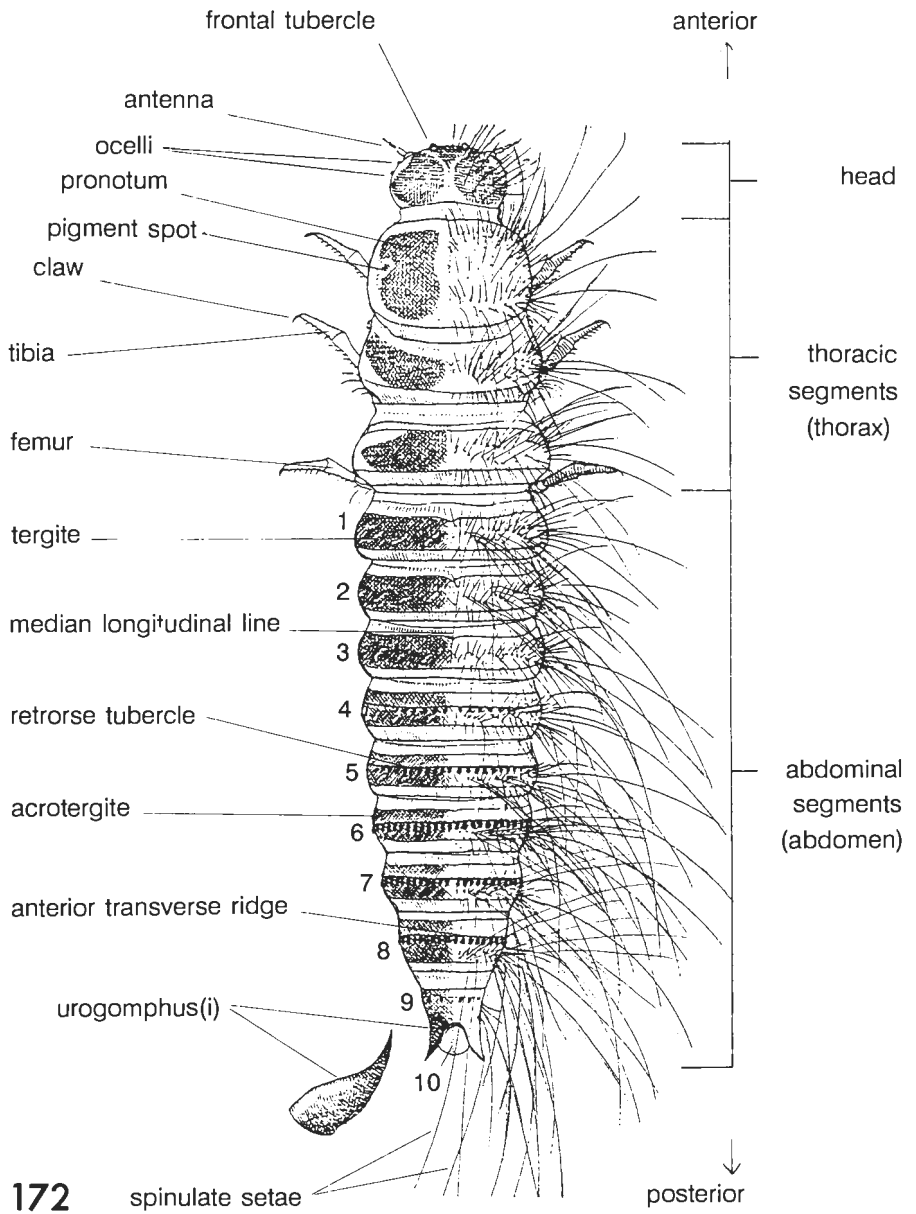
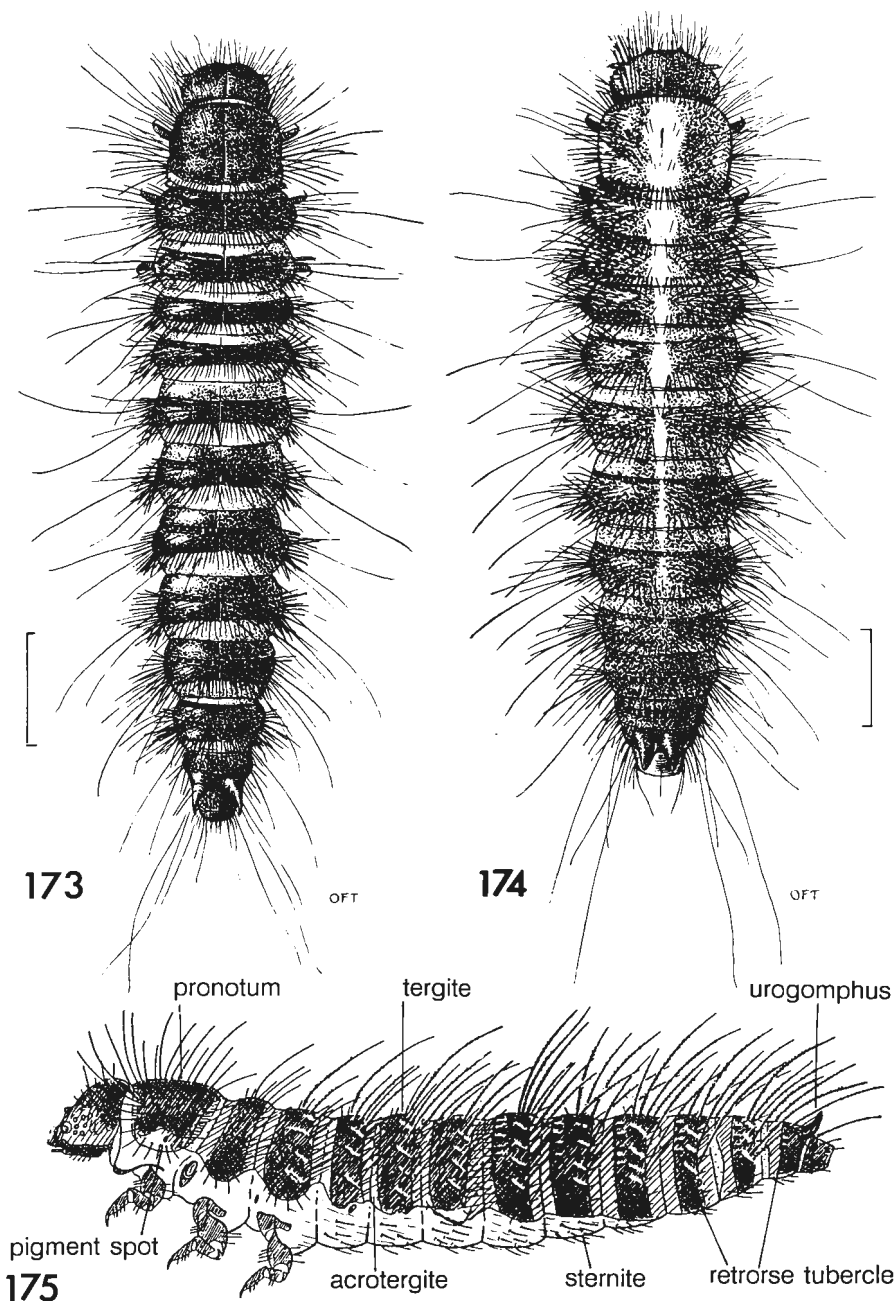
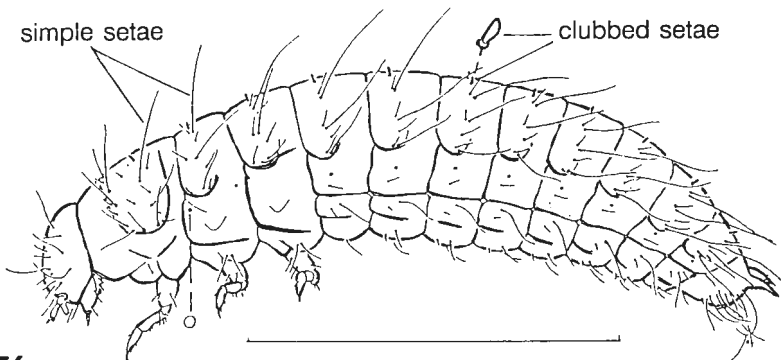


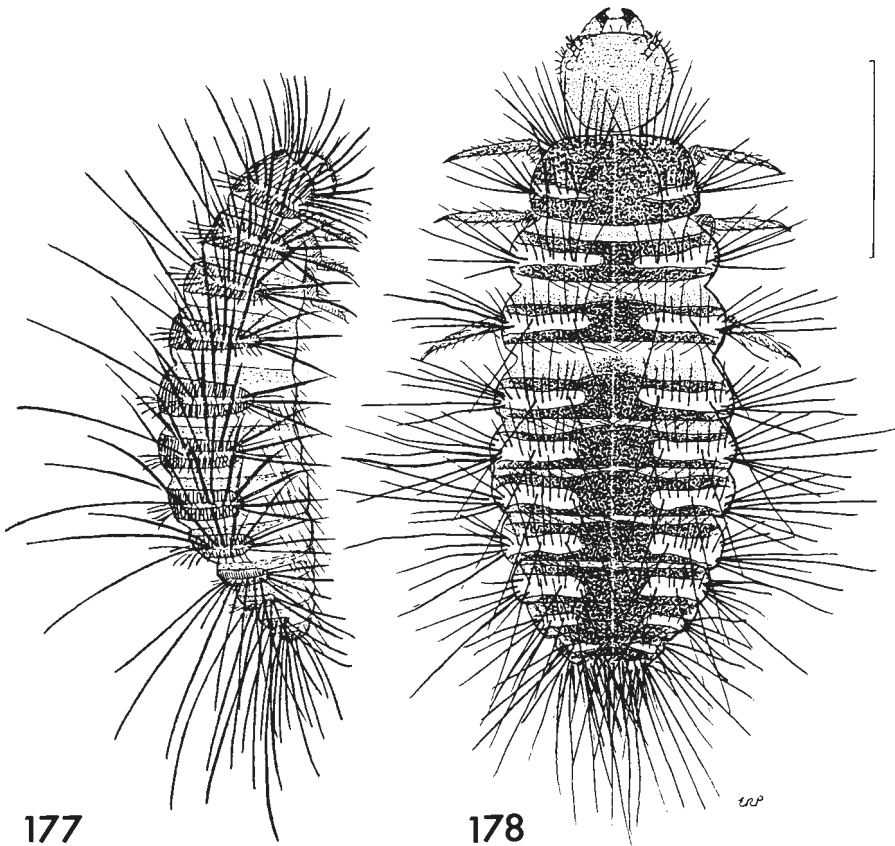
Fig. 172. *Dermestes maculatus* larva, to show labelled parts (setae partially omitted). After Korschefsky (1944).



Figs 173–175. *Dermestes* spp. larvae. 173–174, dorsal view. 175, side view. 173, *D. lardarius*. 174–175, *D. maculatus*. Figs 173–174 after Hinton (1945); 175, adapted from Rees (1943). Scale line = 2.0 mm.



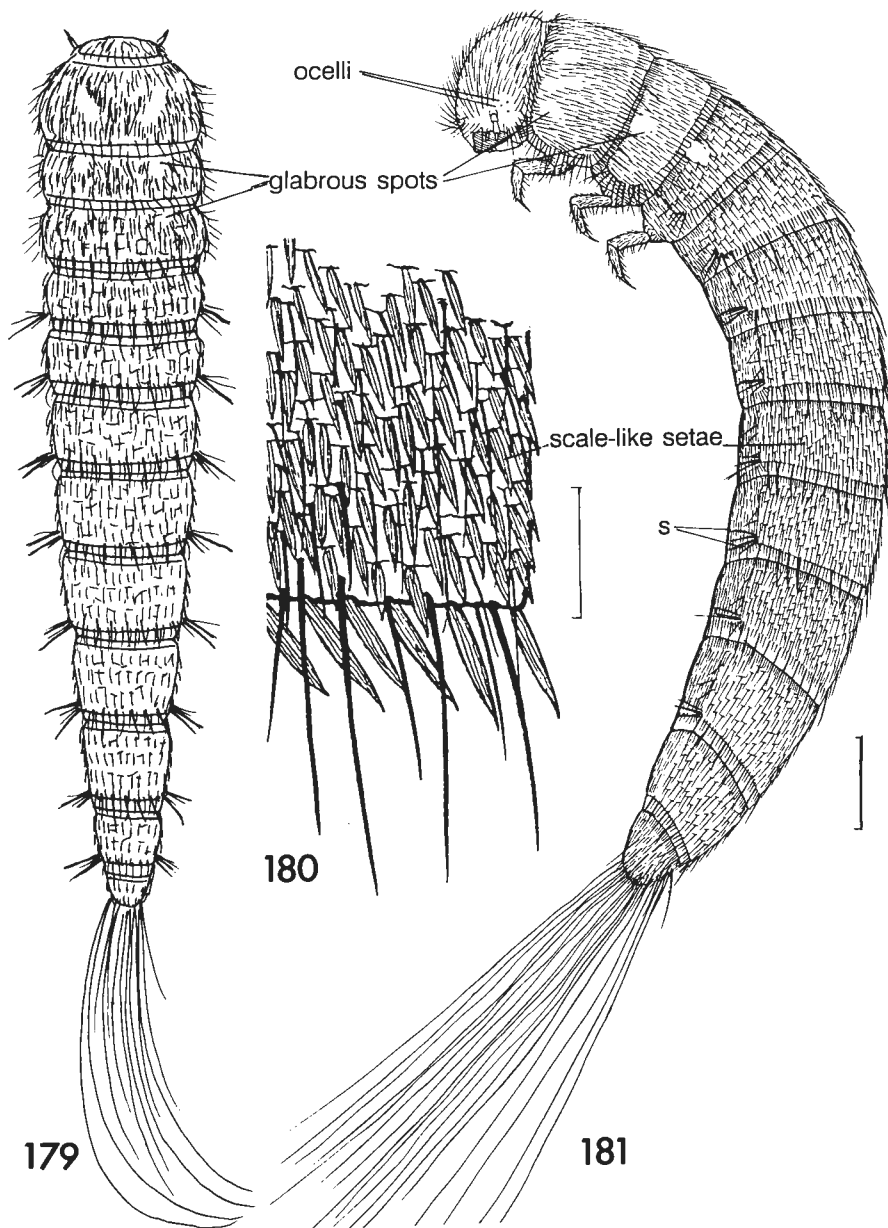
176



177

178

Figs 176–178. Larvae. 176, *Thorictodes heydeni*, side view. 177–178, *Trinodes hirtus*, side and dorsal view. Fig. 176 after Anderson (1949); 177 after Donisthorpe (1930). Scale lines = 1.0 mm.



Figs 179–181. 179, *Attagenus* sp. larva. dorsal view. 180–181, *A. pellio*. 180, scale-like setae. 181, dorso-lateral view. s = outstanding setae on spiracular sclerite. 180, 181 adapted from unpublished original by Hopkins. Scale lines for 179, 181 = 1.0 mm; for 180 = 0.2 mm.

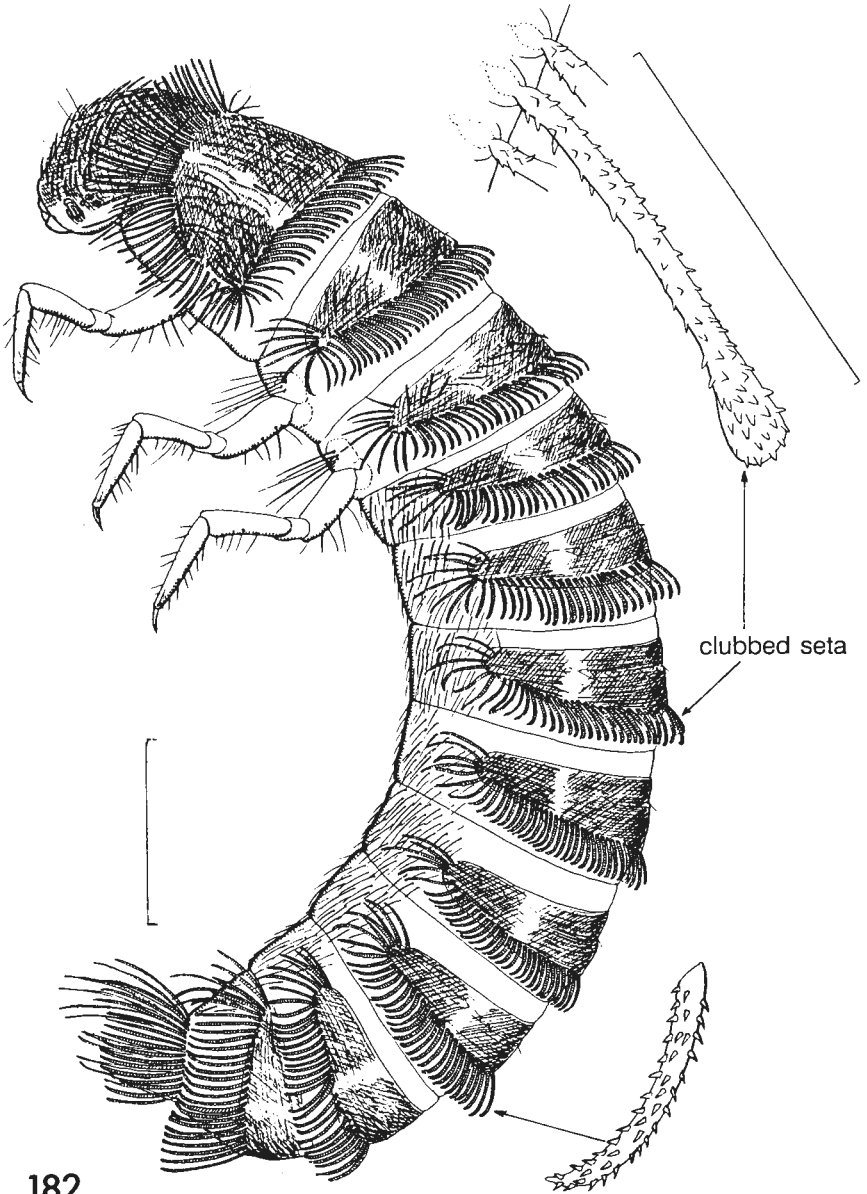
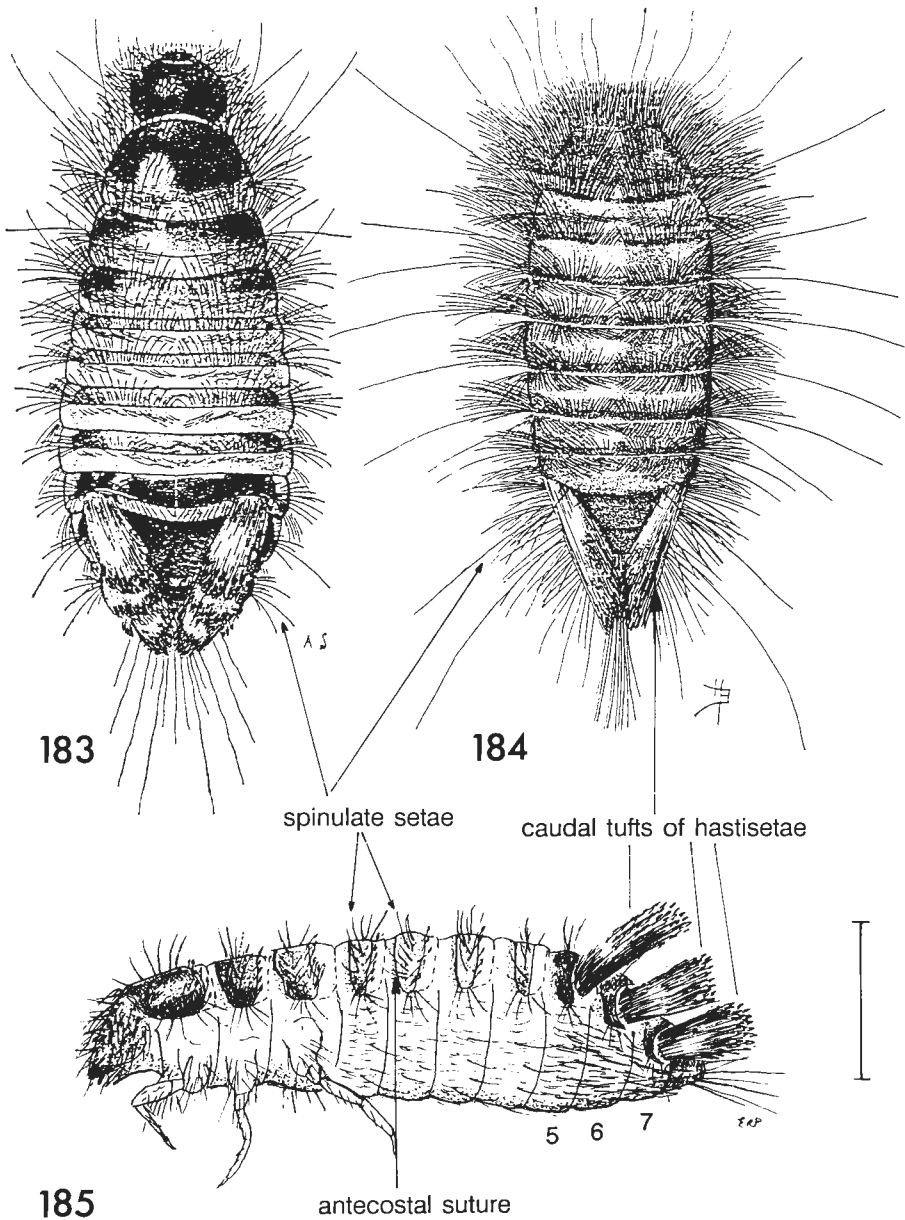
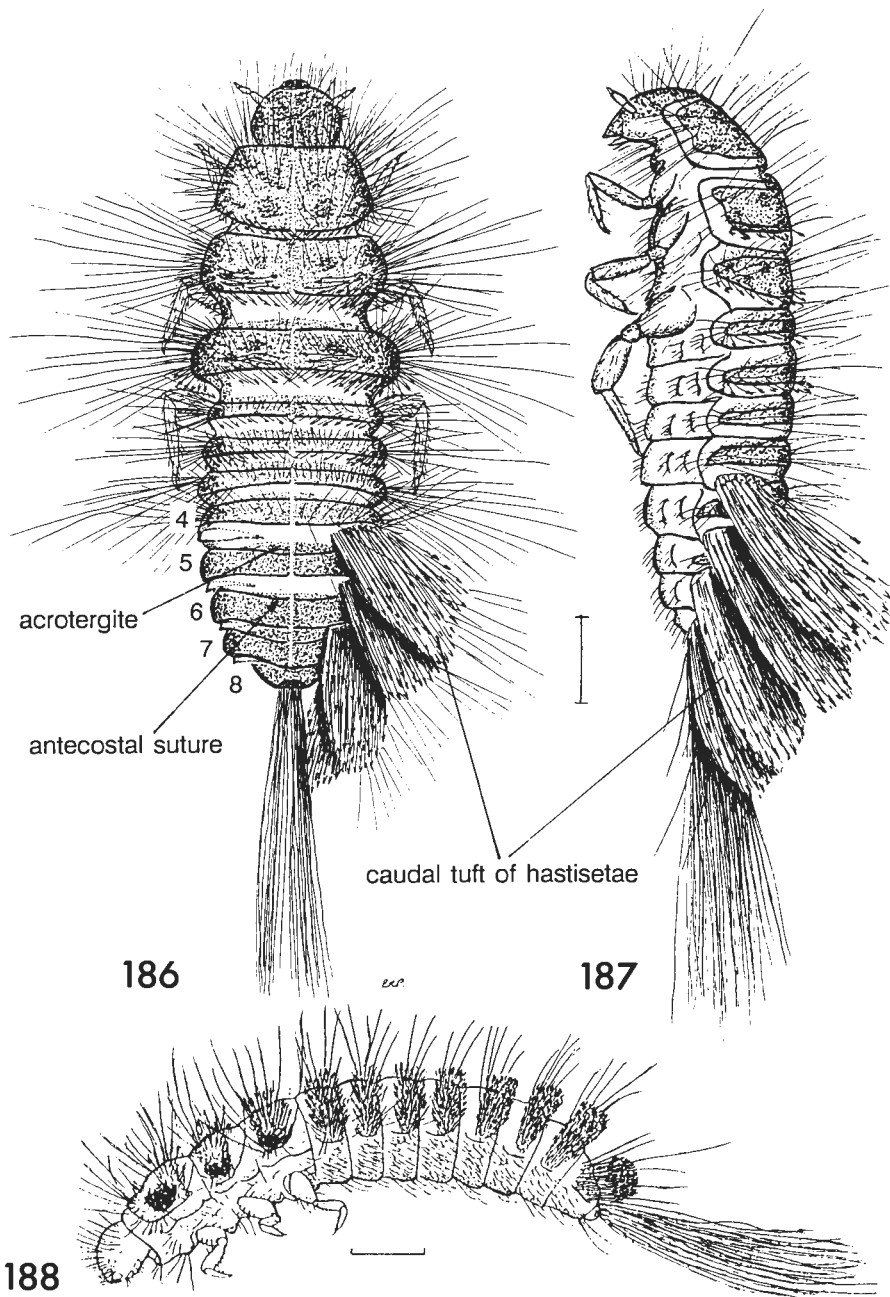


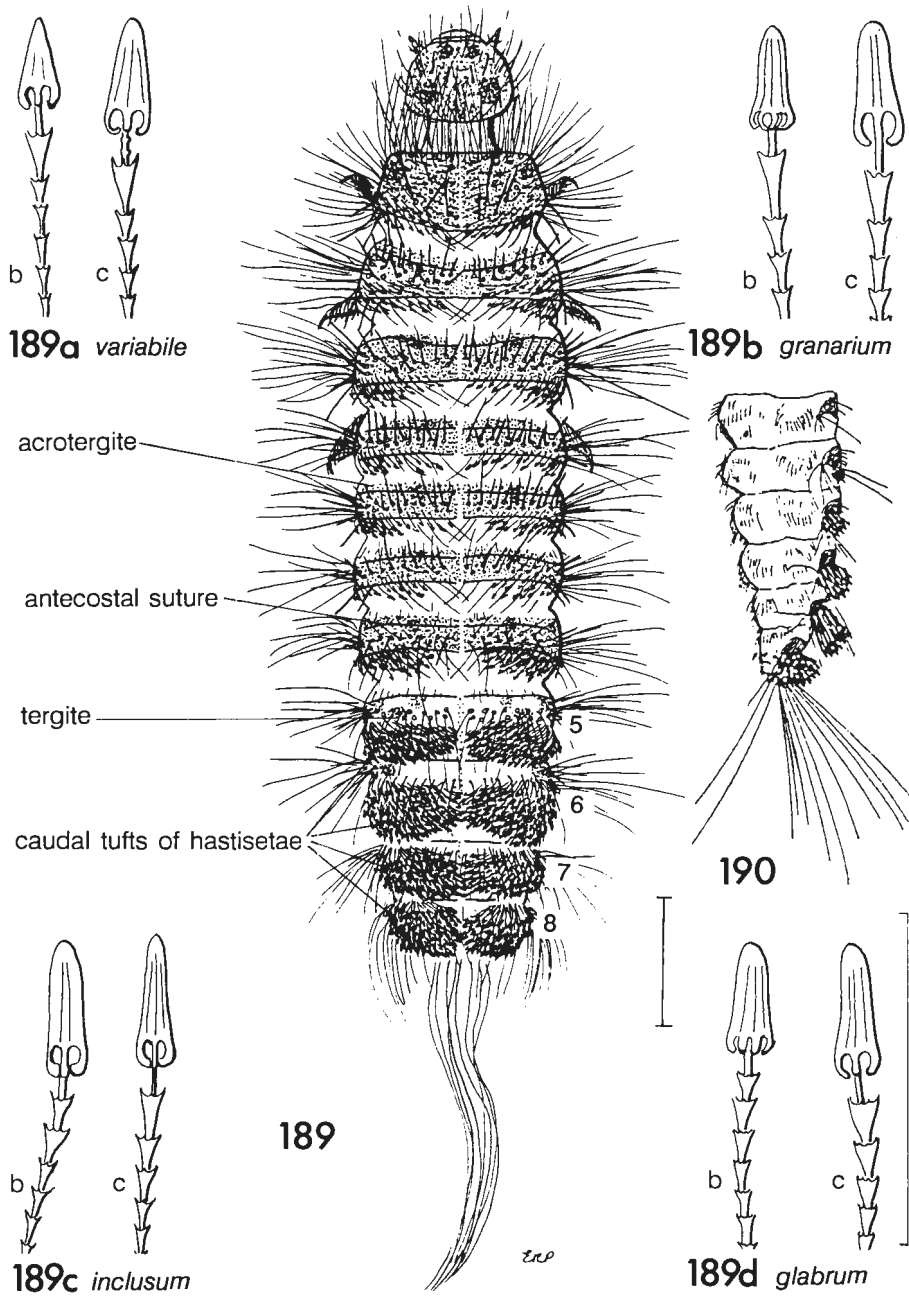
Fig. 182. Larva of *Thyloedrias contractus*. Adapted from unpublished original by Hopkins. Scale line = 1.0 mm; for enlargement of setae = 0.2 mm, after Hinton (1945).



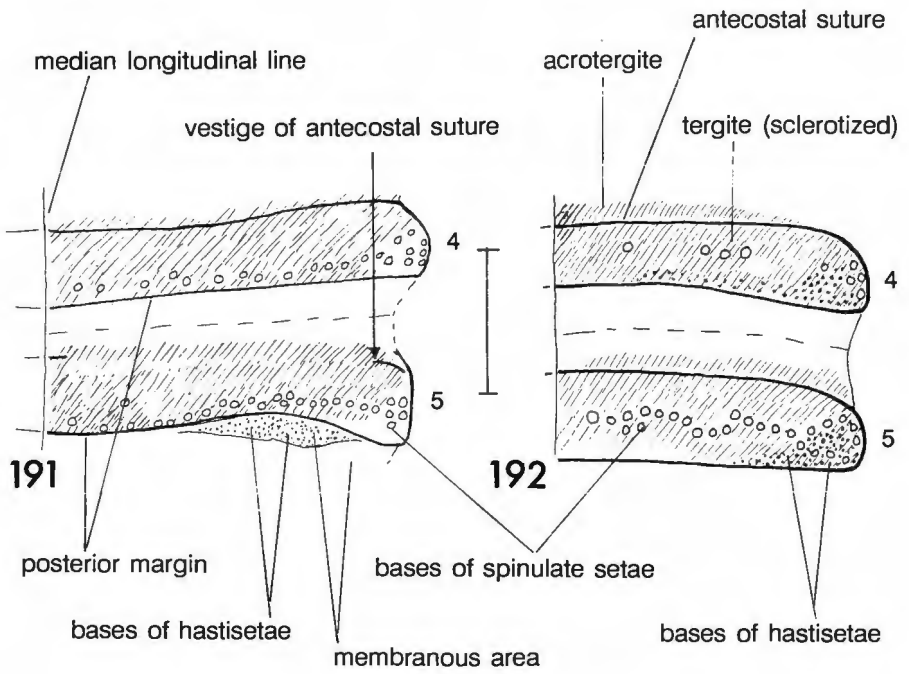
Figs 183–185. Larvae of *Anthrenus* spp. 183, 185, *A. verbasci*, dorsal and side view. 184, *A. flavipes*, dorsal view. Fig. 183 adapted from BMNH publication; 184 adapted from Back & Cotton (1936). Scale line = 1.0 mm.



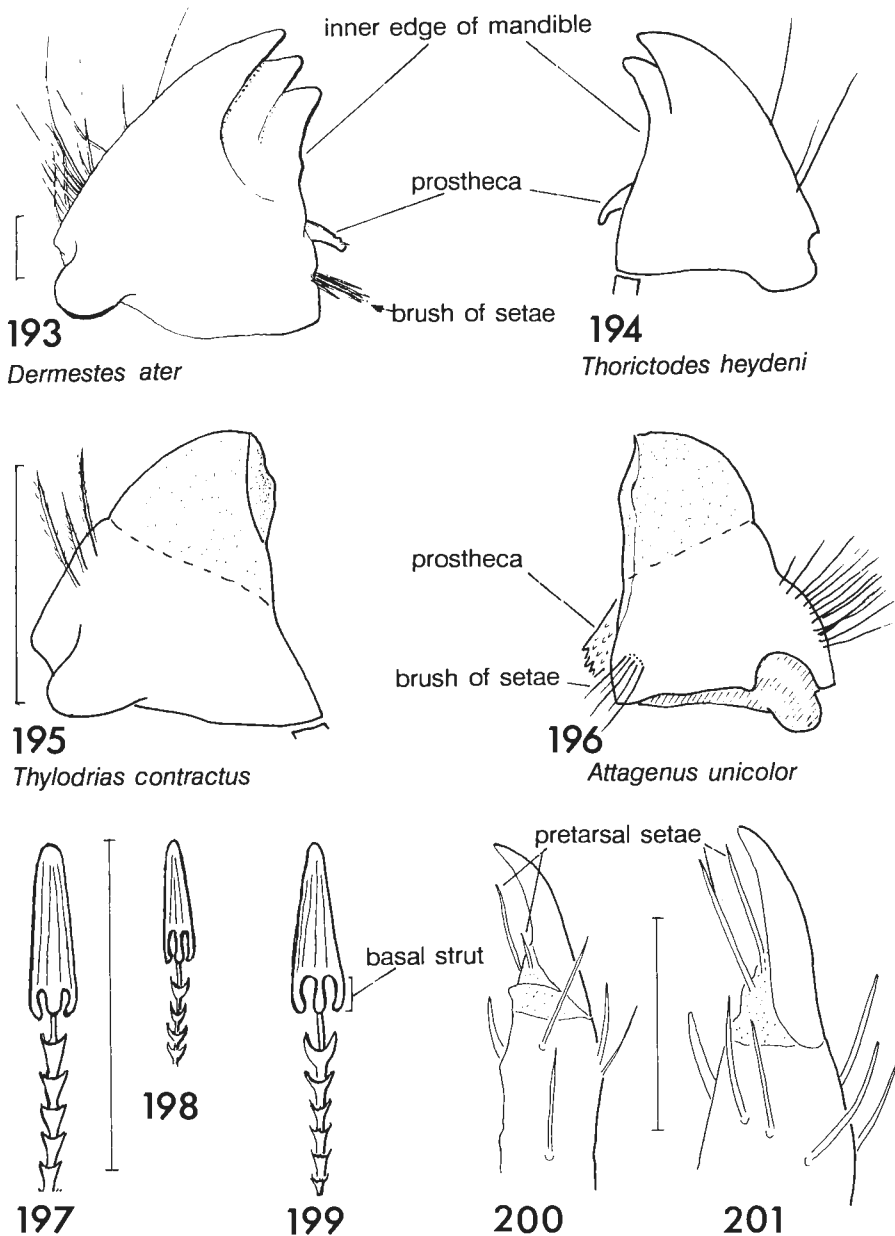
Figs 186–188. 186–187, larva of *Ctesias serra*, dorsal and side view (some setae omitted). 188, larva of *Megatoma undata*, side view. Scale lines = 1.0 mm.



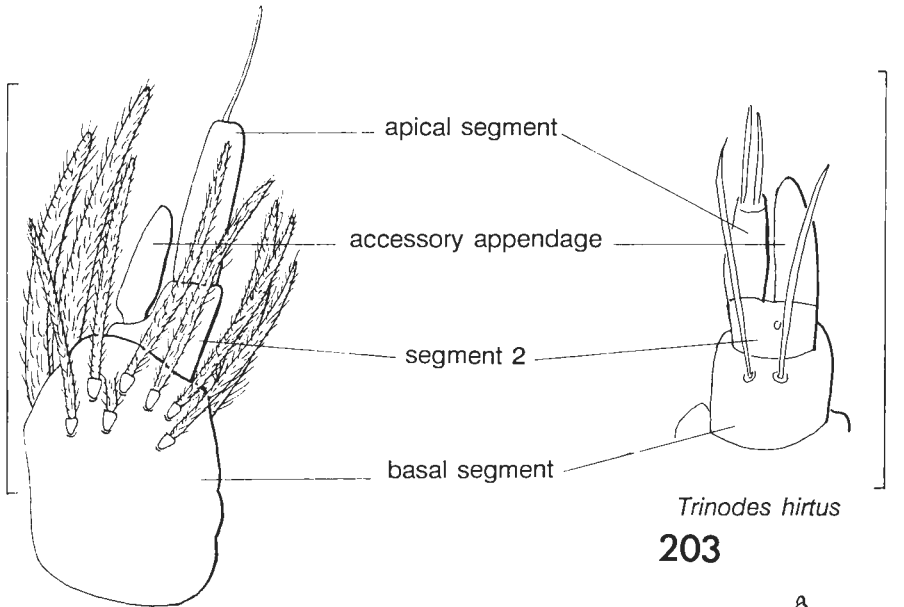
Figs 189–190. *Trogoderma* spp., larva. 189, *T. glabrum*, dorsal view (head extended), scale line = 1.0 mm. 189a–189d = enlargement of hastiseta of *Trogoderma* spp., b = seta from abdominal tergite 1, c = seta from caudal tuft of abdominal tergite 6, scale line = 0.1 mm. 190, side view of apical abdominal segments.



Figs 191–192. Right side of abdominal tergites 4 and 5 of larva (setae omitted). 191, *Anthrenus verbasci*. 192, *Trogoderma granarium*. Scale line = 0.2 mm.

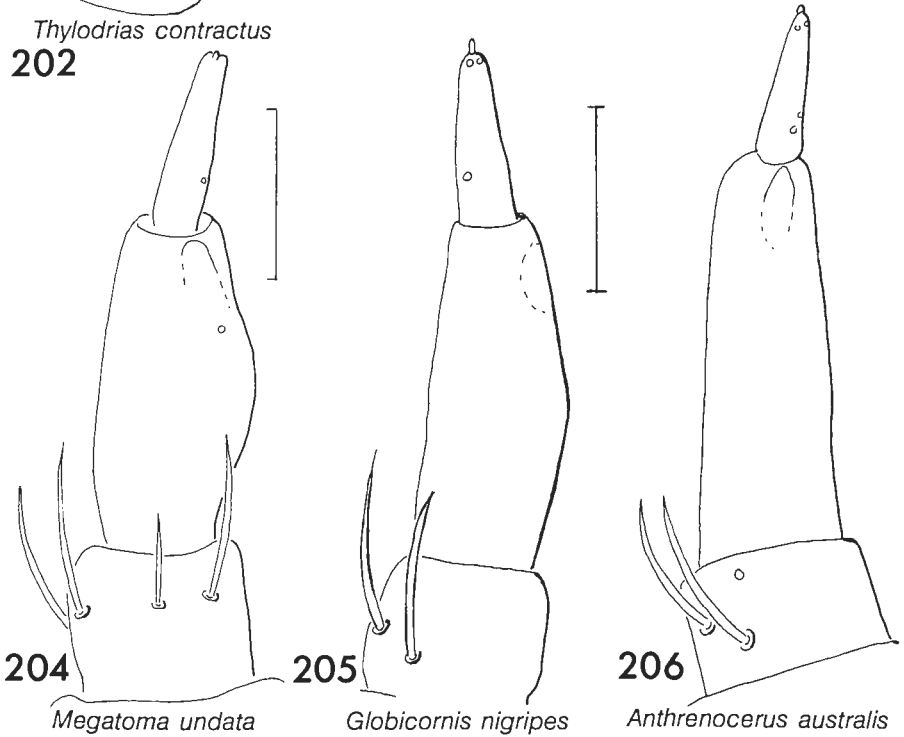


Figs 193–201. 193–196, mandible of larva. Scale lines = 0.2 mm; no scale line for fig. 194. 197–199, hastiseta from 8th abdominal tergite. 197, *Megatoma undata*. 198, *Globicornis nigripes*. 199, *Anthrenocerus australis*. 200–201, apex of leg. 200, *Trogoderma granarium*. 201, *Reesa vespulae*. Fig. 194 redrawn from Anderson (1949). Scale lines for 197–201 = 0.1 mm.



Thylotrias contractus
202

Trinodes hirtus
203

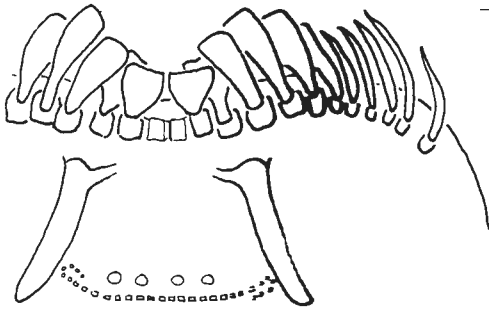


204
Megatoma undata

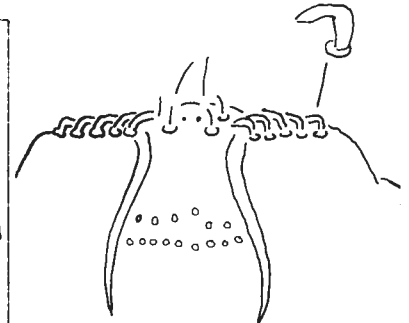
205
Globicornis nigripes

206
Anthrenocerus australis

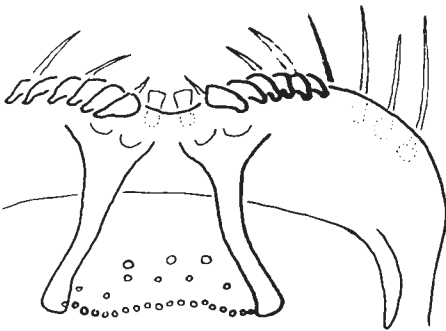
Figs 202–206. Antenna of larva. Fig. 202 after Hinton (1945). Scale lines = 0.1 mm.



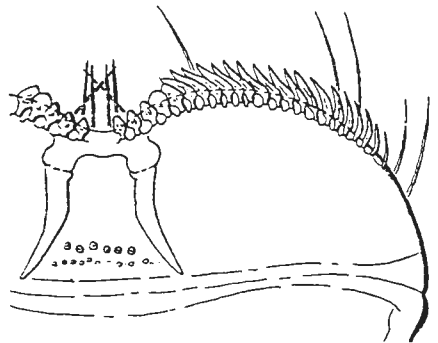
207 *Thylotrias contractus*



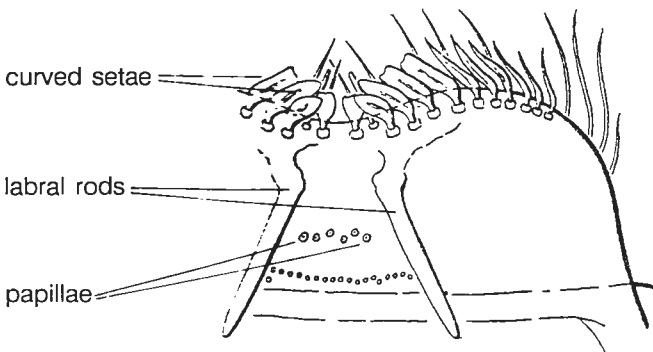
208 *Thorictodes heydeni*



209 *Trinodes hirtus*

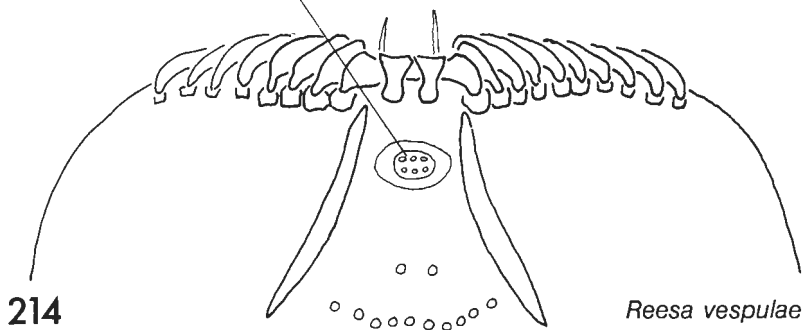
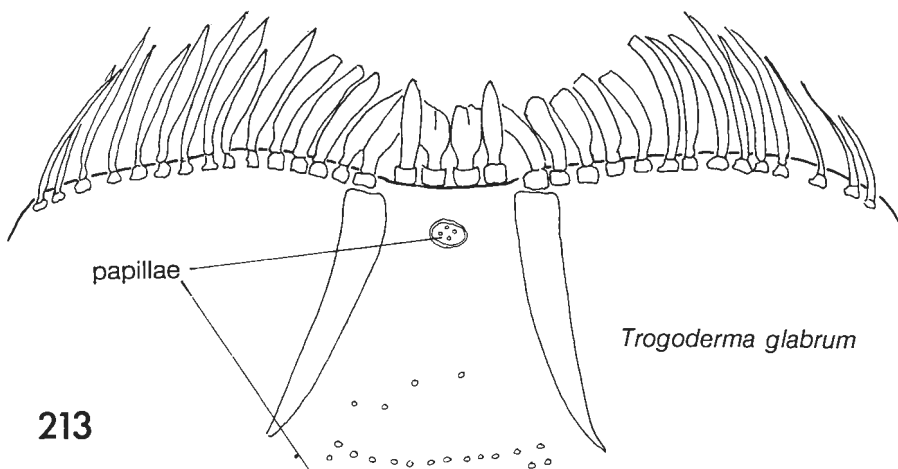
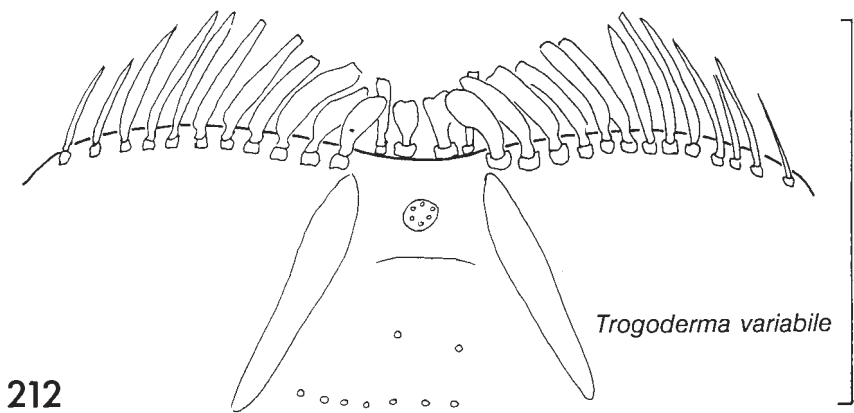


210 *Dermestes maculatus*

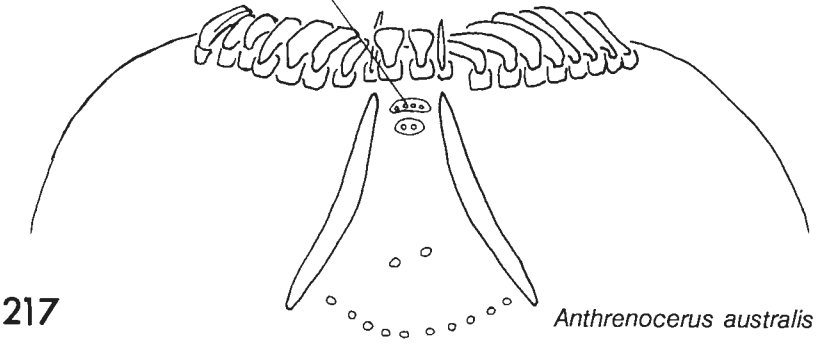
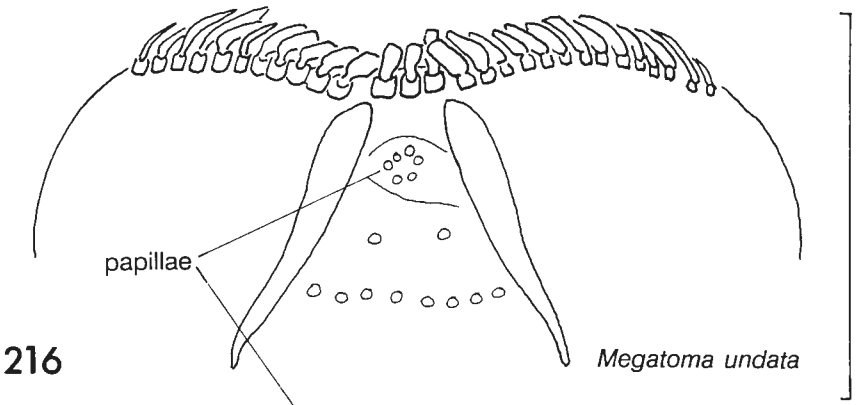
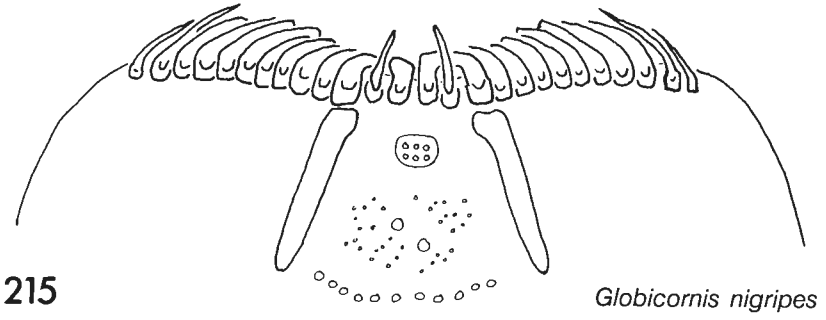


211 *Attagenus unicolor*

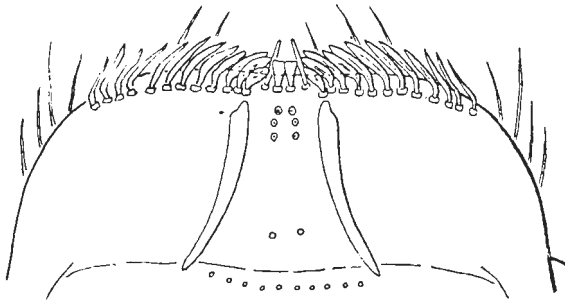
Figs 207–211. Epipharynx of larva. Fig. 208 redrawn from Anderson (1949); 210–211 after Rees (1943). Scale line for figs 207, 209 = 0.1 mm, other scales various.



Figs 212-214. Epipharynx of larva. Scale line = 0.1 mm.

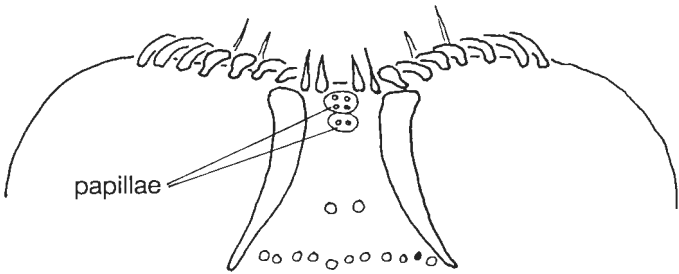


Figs 215–217. Epipharynx of larva. Scale line = 0.1 mm.



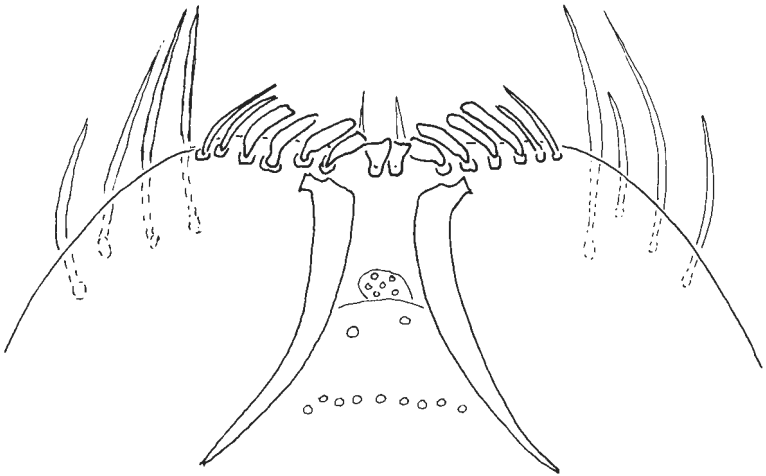
218

Ctesias serra



219

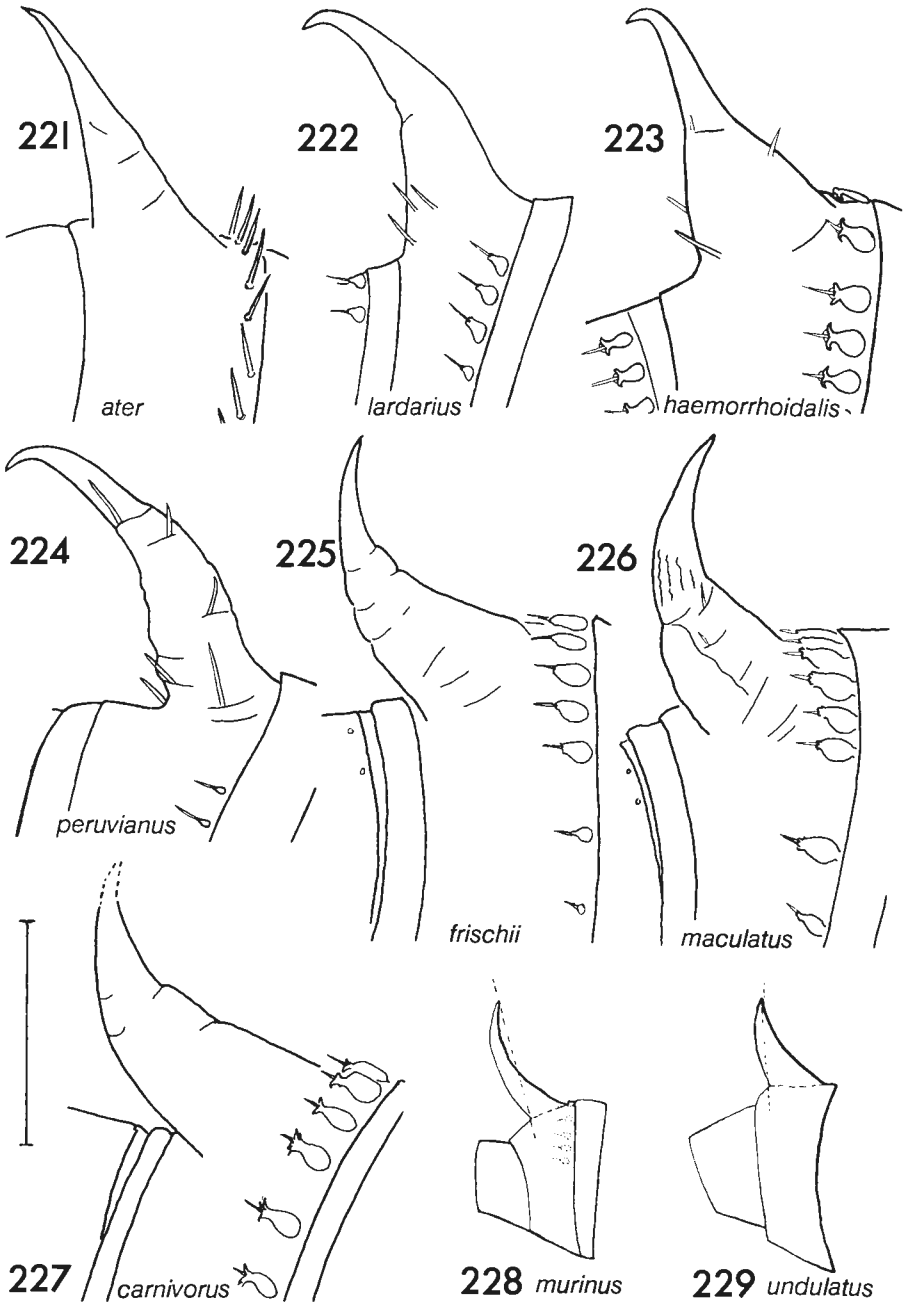
Orphinus fulvipes



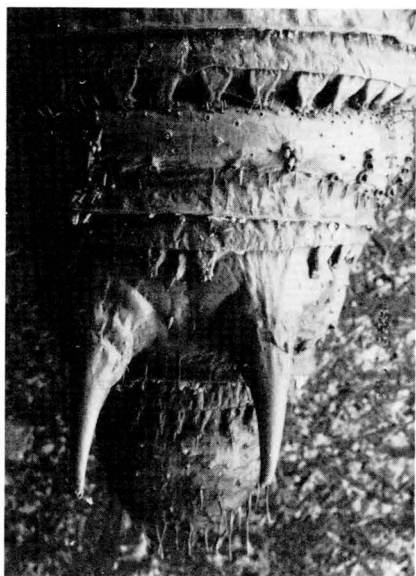
220

Anthrenus verbasci

Figs 218–220. Epipharynx of larva. Fig. 218 after Rees (1943). Scale line = 0.1 mm.



Figs 221–229. *Dermestes* spp., larva. Side view of dorsal part of abdominal tergite 9 showing right urogomphus and associated tubercles (most setae omitted). Figs 222–224 after Peacock (1976). Figs 228–229 after Larsson, in Hinton (1945), no scale lines. Scale line for figs 224–227 = 0.5 mm.



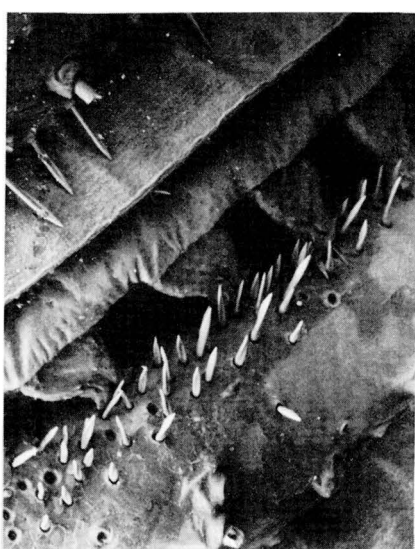
230



231

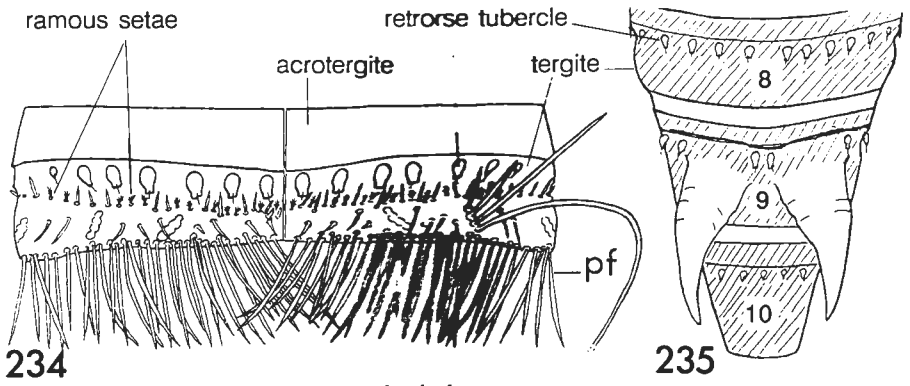


232

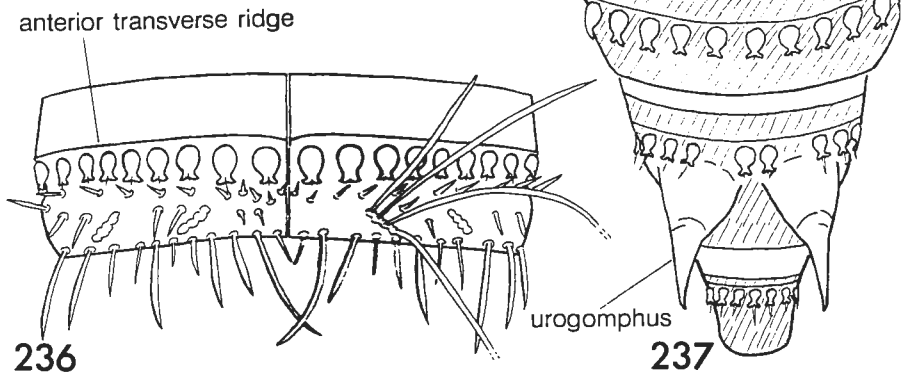


233

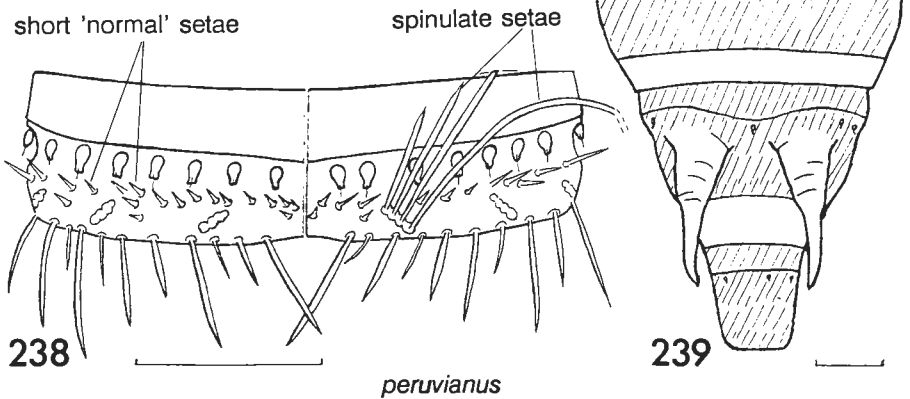
Figs 230–233. *Dermestes leechi*, apical part of larva from Egyptian mummy, showing abdominal tergites (spinulate setae missing), dorsal view except for fig. 231 which is side view. Scale lines = 0.5 mm.



lardarius

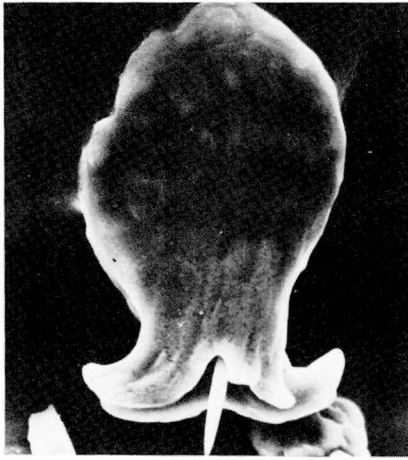
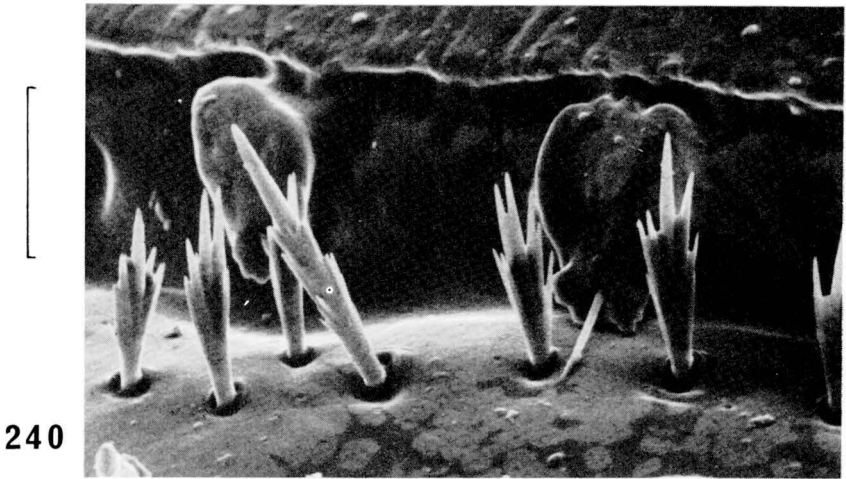


haemorrhoidalis

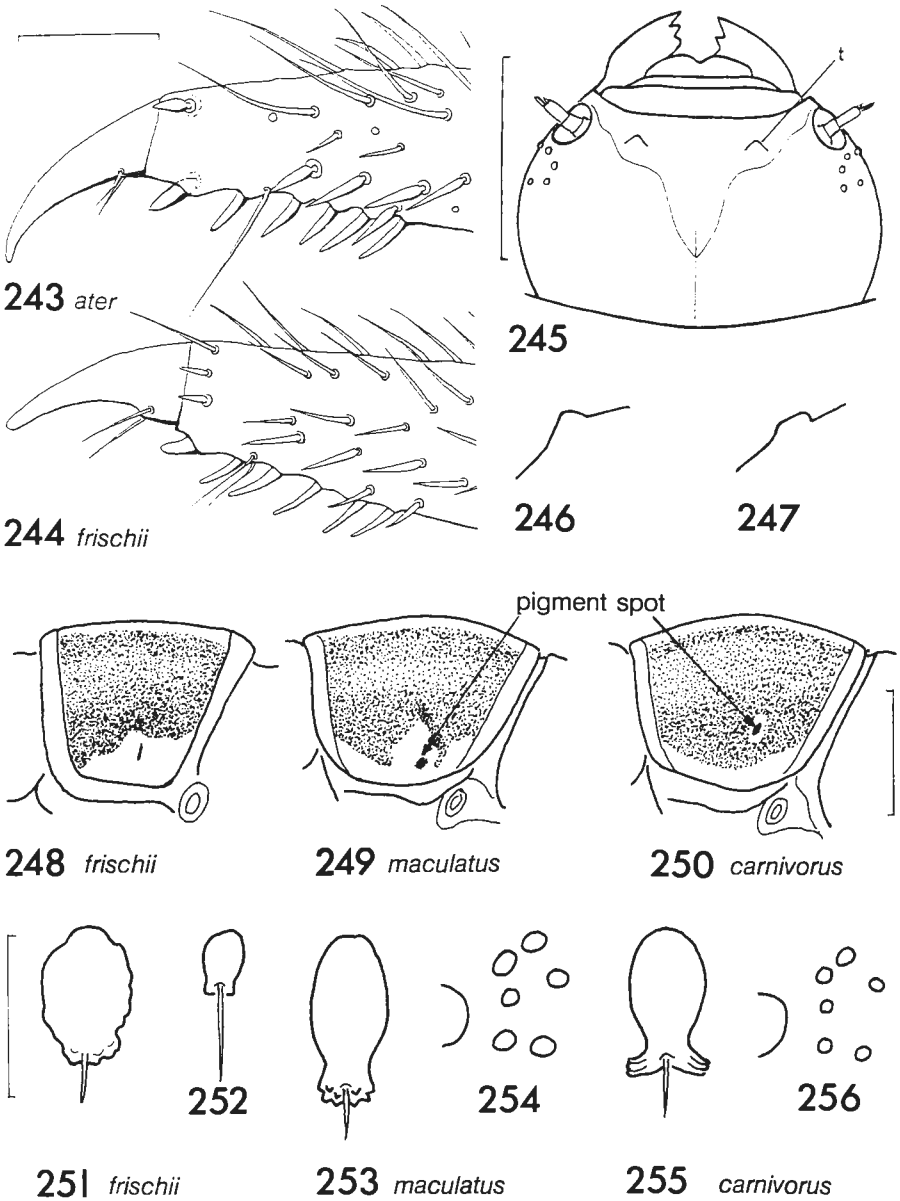


peruvianus

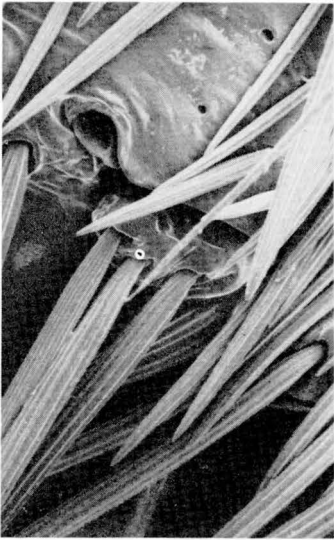
Figs 234–239. *Dermestes* spp., dorsal view of larva. 234, 236, 238, abdominal tergite 6. 235, 237, 239, abdominal tergites 8, 9, 10 (apical), setae omitted. After Peacock (1976). Scale lines = 0.5 mm.



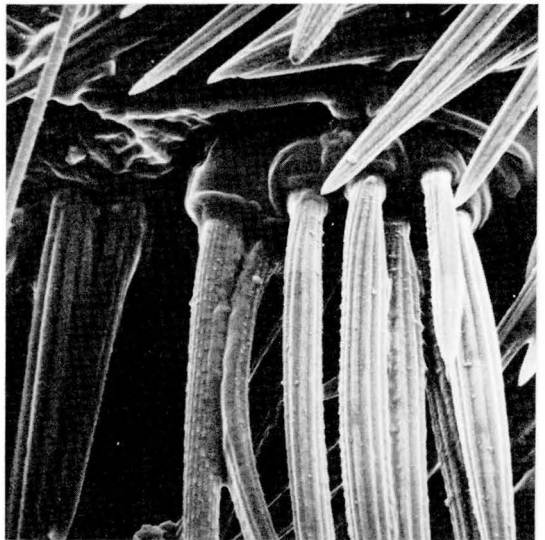
Figs 240–242. *Dermestes* spp. Retrose tubercles and ramous setae on abdominal tergite 6 of larva. 240, *lardarius*. 241, *haemorrhoidalis*. 242, *peruvianus* Scale line = 0.02 mm.



Figs 243–256. *Dermestes* spp., parts of larva. 243–244, apex of posterior face of left fore leg of larva. 245, head of *haemorrhoidalis*, t = tubercle. 246–247, side view of tubercle. 246, *haemorrhoidalis*; 247, *peruvianus*. 248–250, left side of pronotum. 251, 253, 255, retrorse tubercle (from abdominal tergite 8). 252, retrorse tubercle from abdominal tergite 4 of *frischii*. 254, 256, left ocelli. Figs 243–244 after Hinton (1945), figs 245–247 after Peacock (1976). Scale line for figs 248–250 = 1.0 mm; others = 0.2 mm.

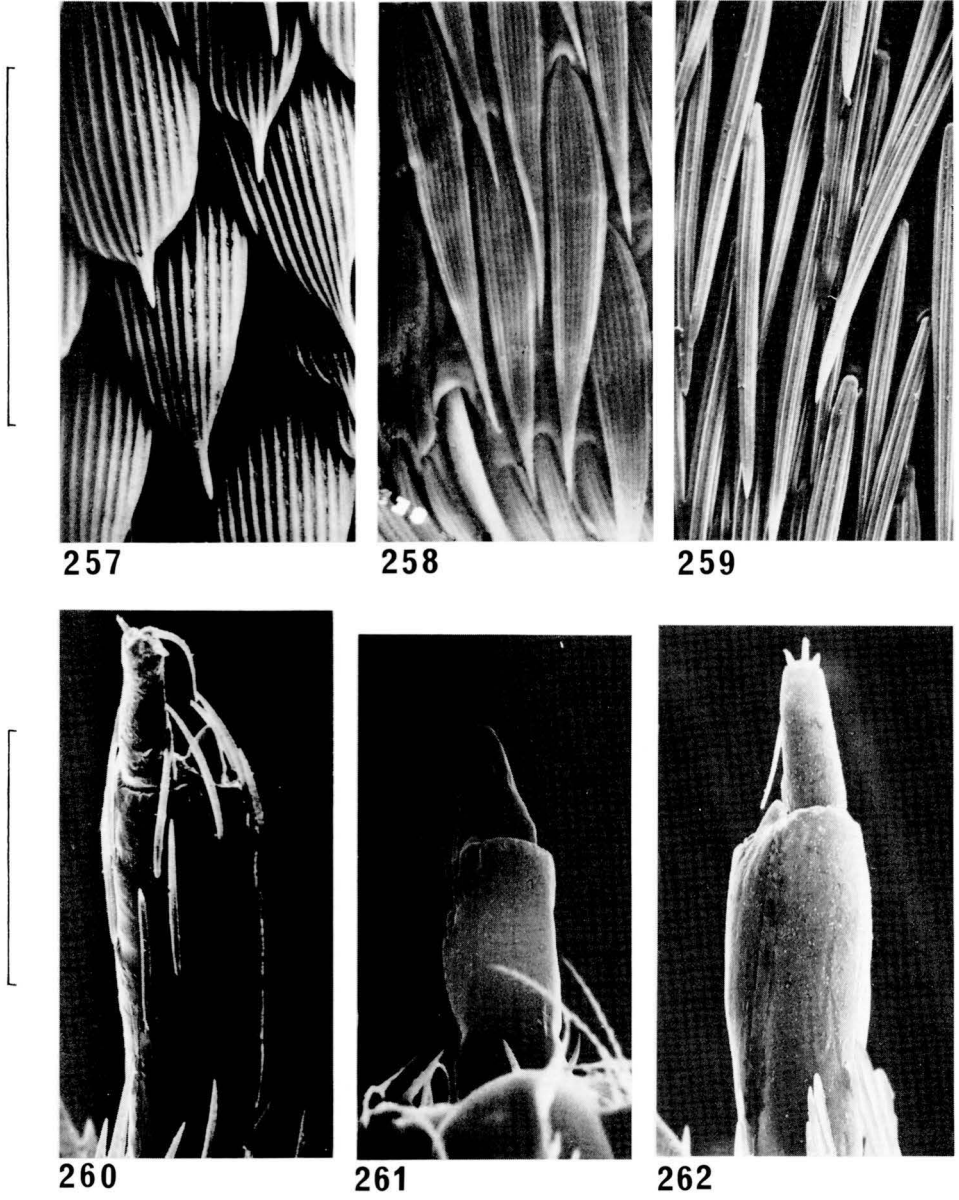


263

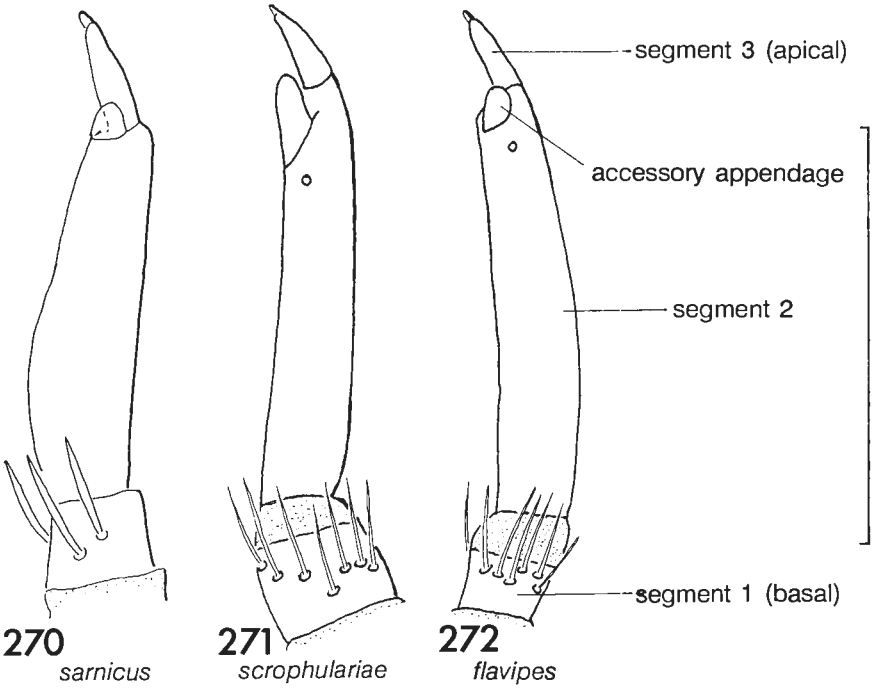
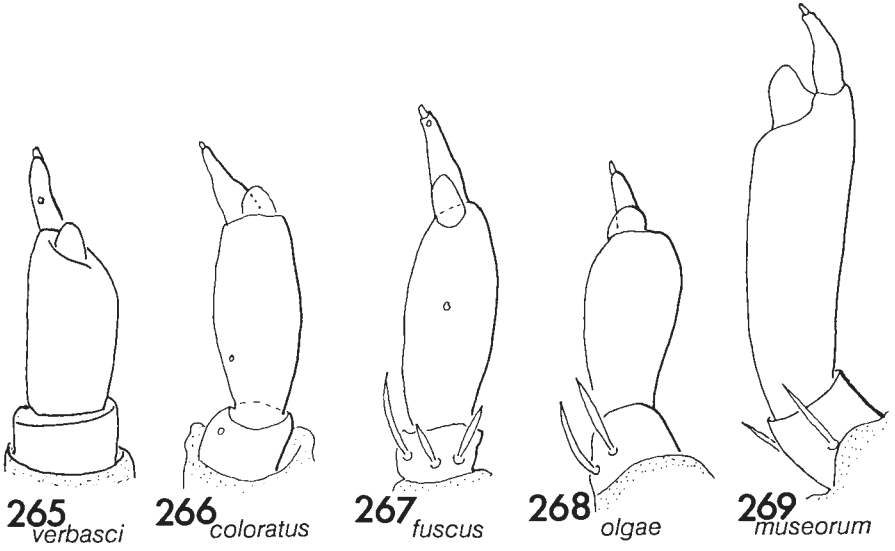


264

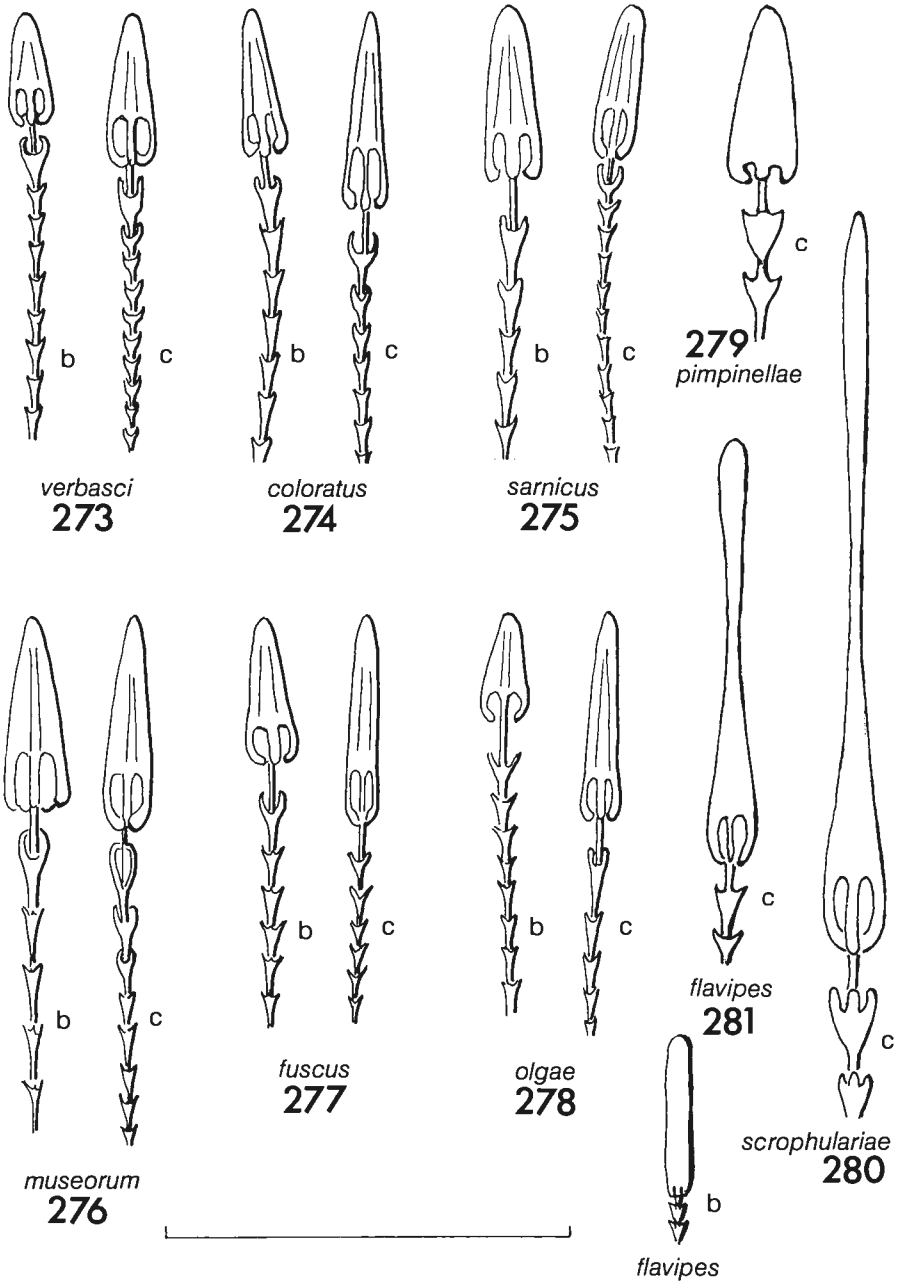
Figs 257–262. *Attagenus* spp., parts of larva. 257–259, setae on abdominal sternite 8. 260–262, segments 2 and 3 (apical) of antenna. 257, *pellio*. 258, *brunneus*. 259, *smirnovi*. 260, *fasciatus*. 261, *cyphonoides*. 262, *smirnovi*. Figs 260–262 after Peacock (1979). Scale lines = 0.1 mm., all to same scale except for fig. 258.



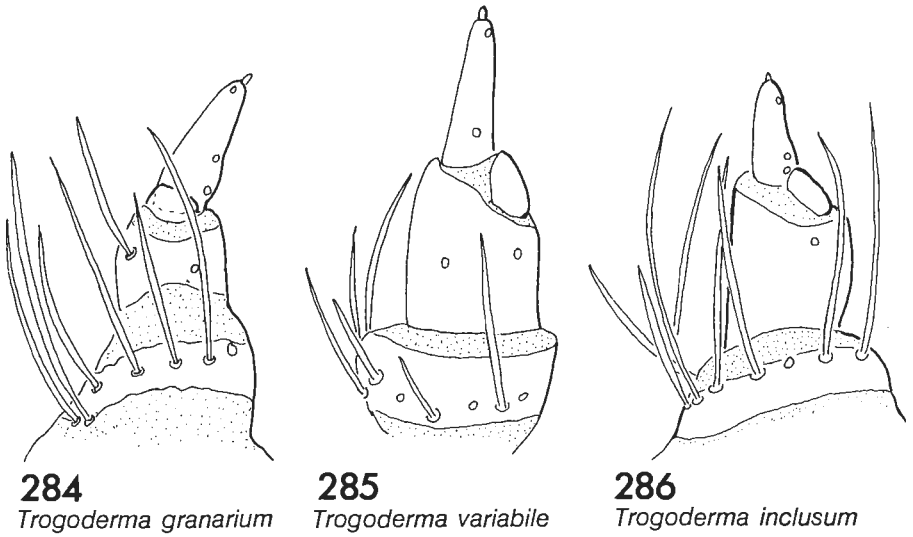
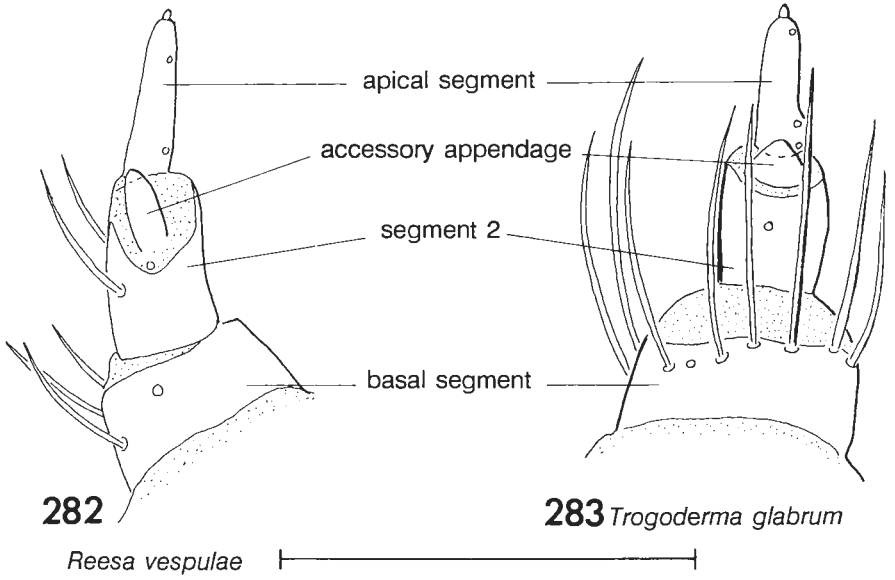
Figs 263–264. *Attagenus* spp., lateral margin of abdominal tergite of larva to show spiracle and spiracular sclerite with setae. 263, *smirnovi*. 264, *unicolor*. Scale line = 0.1 mm.



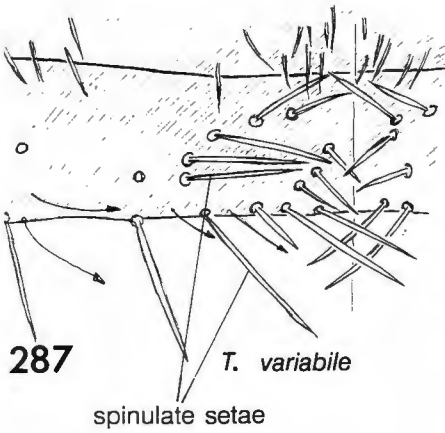
Figs 265–272. *Anthrenus* spp., larval antennae. Figs 271–272 after Hinton (1945). Scale line = 0.2 mm.



Figs 273–281. *Anthrenus* spp., hastisetae from abdominal tergites of larva; b = body seta, from tergite 1; c = seta from caudal tuft of tergite 6. Fig. 279 redrawn after Korschefsky (1944). Fig. 280 after Hinton (1945). Scale line = 0.1 mm.



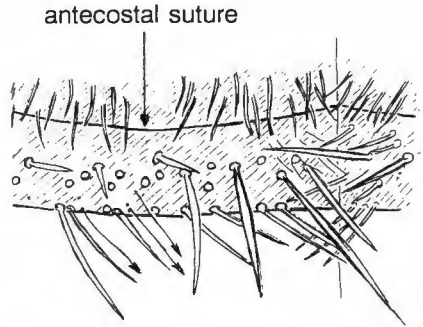
Figs 282–286. Antennae of larva of *Reesa vespulae* and *Trogoderma* spp. Scale line = 0.2 mm.



287

T. variabile

spinulate setae

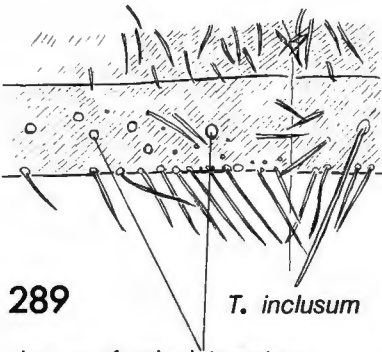


288

T. granarium

acrotergite

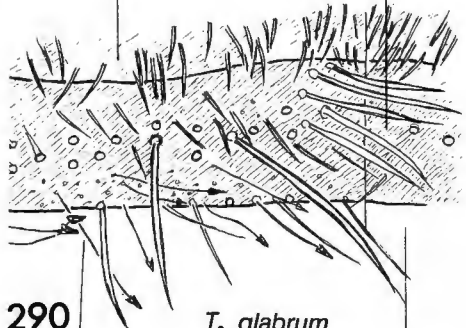
tergite



289

T. inclusum

bases of spinulate setae



290

T. glabrum

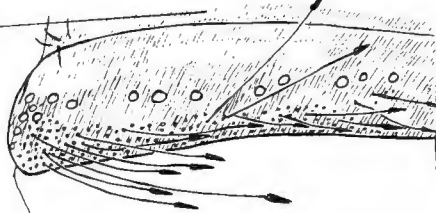
hastisetae

membranous area

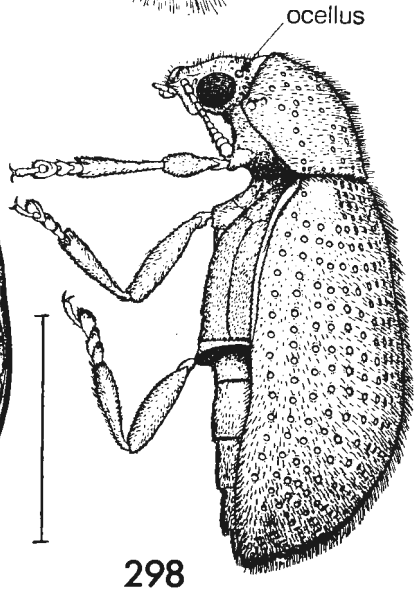
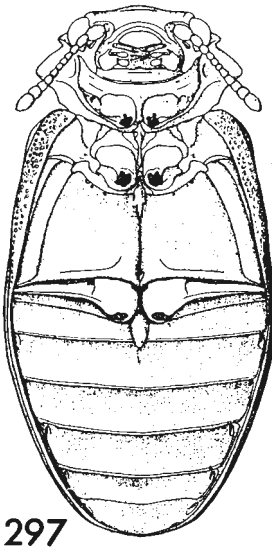
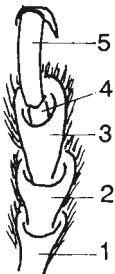
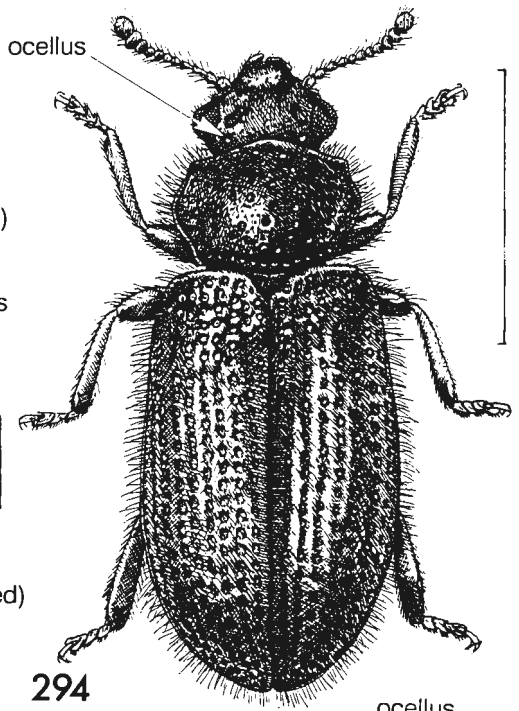
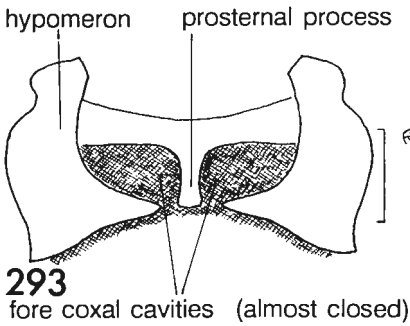
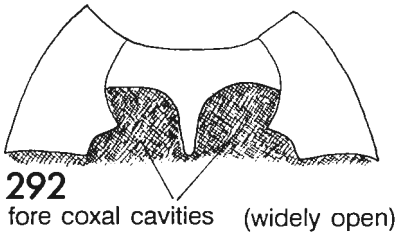
acrotergite

291

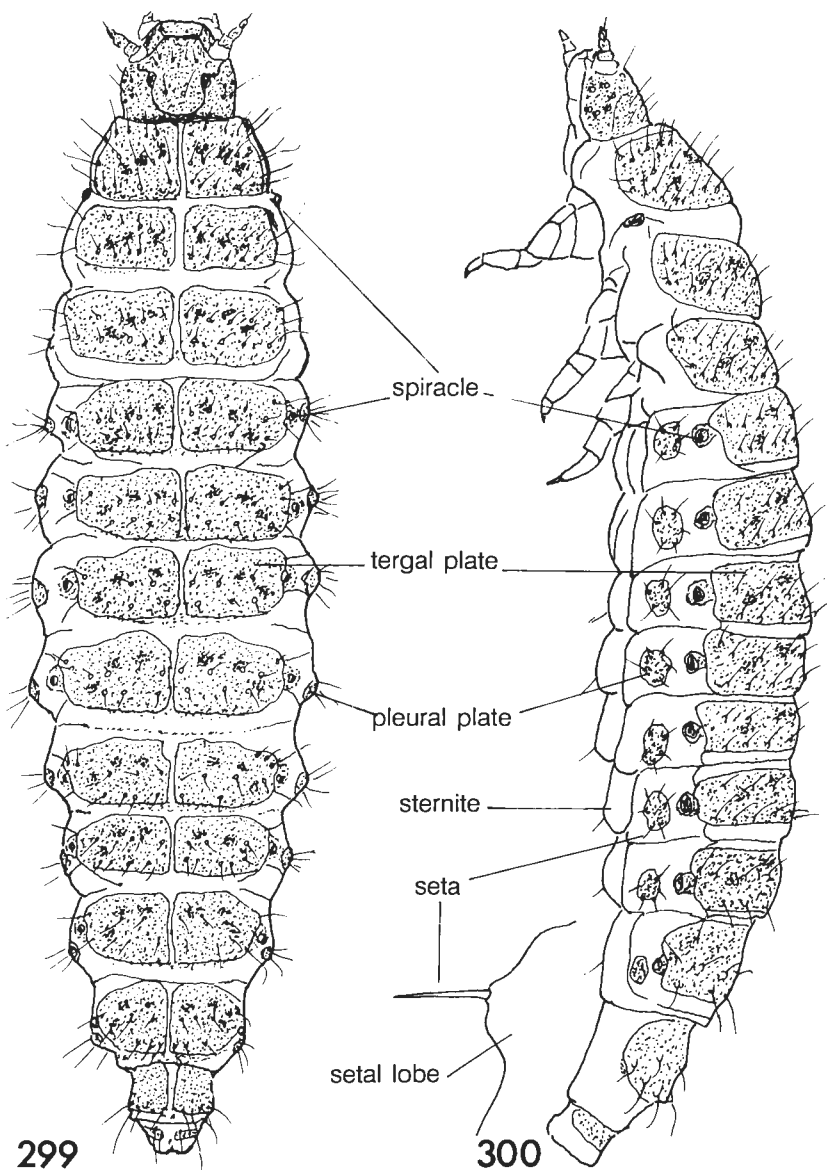
Reesa vespulae



Figs 287–291. Part of abdominal tergite I of larva. 287–290, *Trogoderma* spp. 291, *Reesa vespulae*.



Figs 292–298. Figs 292–293, ventral view of prothorax of adult (legs removed). 292, *Globicornis nigripes* (Dermestidae), 293, *Laricobius erichsonii* (Derodontidae). Figs 294–298, *Laricobius erichsonii*, adult. 294, dorsal view; 297, ventral view (legs removed); 298, side view. Figs 295–296, tarsus. 295, middle, 296, hind. Fig. 294 from Hammond & Barham (1982) (tarsi redrawn). Figs 297–298 after Franz (1958). Scale lines = 1.0 mm, except for figs 295–296, = 0.2 mm.



Figs 299–300. *Laricobius erichsonii* larva. 299, dorsal view. 300, side view. Drawn from Franz's descriptions (1958). Scale line = 1.0 mm.

Index

(non-valid names and subgenera are given in *italics*; habitus figure numbers in **bold**)

- Adelges piceae 68
Anthreninae 7, 8, 19, 30
Anthrenocerus 8, 10, 16, 26, 29, 37, 42, 59
Anthrenocerus australis 8, 16, 29, 33, 42, 59;
figs 19, **92**, 102, 115, 121, 199, 206, 217
Anthrenodes (subgenus) 9, 31
Anthrenops (subgenus) 9, 31
Anthrenus 5, 6, 8, 9, 10, 11, 12, 13, 14, 15, 16,
17, 18, 30, 32, 33, 35, 37, 43, 61, 70
Anthrenus (subgenus) 7, 8, 30
Anthrenus *claviger* 9
coloratus 6, 9, 31, 43, 61, 65; figs **148**, 157,
171, 266, 274
flavipes 8, 14, 16, 30, 44, 61, 62; figs **143**,
144, 150a, 151, 153, 168, **184**, 272, 281
fuscus 9, 13, 16, 31, 34, 44, 61, 64, 65; figs 1,
18, **141**, 160, 166, 267, 277
museum 9, 14, 31, 35, 44, 61, 64; figs **142**,
158, 165, 269, 276
olgae 6, 9, 16, 31, 44, 61, 65; figs **147**, 159,
167, 268, 278
pimpinellae 8, 31, 35, 44, 61, 63; figs **145**,
154, 169, 279
sarnicus 9, 12, 13, 16, 17, 31, 34, 43, 61, 65;
figs **140**, 156, 164, 270, 275
scrophulariae 8, 14, 16, 31, 35, 44, 61, 63;
figs **146**, 152, 155, 162, 170, 271, 280
varius 9
verbasci 9, 11, 13, 14, 16, 30, 34, 43, 61, 64,
66; figs 2, **139**, 149, 150, 161, 163, **183**,
185, 191, 220, 265, 273
vorax 8
Apsectus 32
Attageninae 8, 17, 19, 23
Attagenus 8, 9, 10, 16, 17, 23, 24, 36, 40, 52;
fig. **179**
Attagenus *alfierii* 8
brunneus 6, 8, 25, 40, 55; figs 9, 77, 83, 87,
258
cyphonoides 8, 24, 40, 53; figs 68, 70, 74, 80,
84, 261
elongatulus 8, 55
fasciatus 8, 16, 24, 40, 52; figs **65**, 78, 260
gloriosae 8
megatoma 8, 14
pellio 8, 14, 24, 33, 40, 53; figs **66**, 79, 180,
181, 257
piceus 8
smirnovi 6, 8, 24, 33, 40, 54; figs 69, 71, 72,
75, 81, 85, 259, 262, 263
trifasciatus 7
unicolor 8, 14, 16, 24, 25, 41, 54, 55; figs 12,
67, 73, 76, 82, 86, 196, 211, 264
woodroffei 16, 24
Australian carpet beetle 29, 59
bacon beetle 49
black carpet beetle 25, 54
Blattella germanica 50
Bostrichoidea 6
buffalo carpet beetle 31, 63
buffalo moth 31, 63
carpet beetles 30, 61
cock's foot 57
cockroach 65
common carpet beetle 31, 63
common jumping spider 29, 59
Cossus cossus 61
Creophilus maxillosus 13
Cryptorhopalum brevicorne see Orphinus
fulvipes
Ctesias 8, 26, 29, 37, 43, 60
Ctesias serra 7, 8, 16, 29, 33, 43, 60, 63, 66; figs
17, **93**, 101, 116, 117, **186**, **187**, 218
Dactylis glomerata 57
Decamerus 23
Dermestes 5, 7, 9, 10, 11, 14, 16, 17, 20, 21, 24,
32, 35, 36, 38, 45, 69; figs 3, 49
Dermestes (subgenus) 7, 21
Dermestes ater 7, 20, 23, 38, 50; figs **24**, 35, 39,
57, 58, 193, 221, 243
cadaverinus 7
carniforus 7
carnivorus 7, 20, 22, 39, 48; figs **23**, 31, 44,
227, 250, 255, 256
frischii 7, 14, 20, 22, 34, 39, 47, 50; figs **22**,
30, 225, 244, 248, 251, 252
haemorrhoidalis 8, 11, 16, 20, 23, 34, 39, 49,
50, 51, 52; figs 36, 40, 45, 51, 53, 59, 60,
64, 223, 236, 237, 241, 245, 246
lardarius 7, 13, 14, 16, 20, 22, 33, 38, 49, 51;
figs **27**, 34, 38, **173**, 222, 234, 235, 240
leechi 6, 7, 16, 20, 22, 35, 38, 47, 50; figs 37,
42, 48, 50, 55, 56, 63, 230–233
maculatus 7, 13, 14, 20, 21, 34, 39, 46, 47, 50,
55; figs **21**, 29, 43, **172**, 174, 175, 210, 226,
249, 253, 254
murinus 7, 20, 22, 34, 40, 48; figs **25**, 32, 228
oblongus 8
peruvianus 8, 11, 16, 20, 23, 34, 39, 49, 50,
51; figs 11, **28**, 36, 41, 46, 47, 52, 54, 61,
62, 224, 238, 239, 242, 247
peruvianus 8
plantaris see Globicornis nigripes
undulatus 7, 14, 20, 22, 34, 35, 40, 48; figs
26, 33, 229
vulpinus 7
Dermestidae 5, 7, 9
Dermestinae 7, 18, 20
Dermestinus (subgenus) 7, 21

- Dermestoidea 5, 7
 Derodontidae 5, 6, 9
 Derontoidea 5, 9
 Derodontus 67
 Evorinea 32
Florilinus (subgenus) 9, 31
 fur beetle 24, 53
 furniture carpet beetle 30, 62
 Globicornis 8, 26, 28, 37, 42, 58
 Globicornis *fulvipes* see *Orphinus fulvipes*
 nigripes 6, 8, 17, 28, 33, 42, 58; figs 15, 90,
 99, 113, 118–120, 198, 205, 215, 292
Globicornus 7
 goat moth 61
 Guernsey carpet beetle 31, 65
Hadrotoma nigripes see *Globicornis*
Helocerus (subgenus) 9, 31
Heracleum sphondylium 58
 hide beetles 21, 45, 46, 51
 hogweed 58
 Homoptera 5, 67
 Jacobsoniidae 5, 6
 khapra beetle 27, 56
Korynetes caeruleus 13
 larder beetles 49
 large cabinet beetle 27, 56
Laricobius 6, 9, 67
Laricobius erichsonii 5, 6, 9, 67; figs 293, 294,
 295–297, 298–300
 leather beetles 46
Megatoma 8, 10, 26, 28, 37, 42, 59
Megatoma undata 8, 28, 33, 42, 59, 63; figs 10,
 16, 91, 100, 114, 188, 197, 204, 216
 Megatominae 7, 8, 19, 25
Montandonia 20
 museum beetle 31, 64
 museum nuisance 28, 57
Nathrenus (subgenus) 9, 30
Necrobia rufipes 13
Necrobia violacea 13
Neoanthrenus 30
 Nosodendridae 5, 6
Nosodendron 6
Nothoderodontus 67
Nothofagus 67
Nothorhina punctata 61
Novelsis 23
 odd beetle 19, 44
Oecobius annulipes 6, 13
 old-fashioned carpet beetle 31, 63
Orphinus 6, 8, 25, 29, 36, 42, 60
Orphinus fulvipes 6, 25, 29, 35, 42, 60; figs
 103, 219
Peltastica 67
Perimegatoma vespulae see *Reesa*
Phleum pratense 57
Ranthenus (subgenus) 18, 31
Reesa 6, 8, 12, 26, 28, 37, 42, 57
Reesa vespulae 6, 8, 16, 28, 42, 57; figs 14, 89,
 98, 112, 201, 214, 282, 291
Rhopalosilpha 20
Salticus scenicus 29, 59
Saprinus semistriatus 13
Secale cereale 58
Sefrania 23
 Silphidae 20
 Spiraea 58
Solskinus (subgenus) 18, 31
Tegenaria domestica 64
Tenebrio molitor 13
Tenebroides mauritanicus 13
Thaumaphrastinae 7
Thaumaphrastus see *Thorictodes*
Thaumaphrastus karanisensis see *Thorictodes*
 heydeni
Thelydriini 7
 Thorictinae 6, 7, 19, 20
 Thorictodes 6, 7, 9, 15, 20, 36, 38, 45
Thorictodes heydeni 6, 7, 20, 35, 38, 45; figs 7,
 176, 194, 208
 Thorictus 20
 Thylotriadinae 7, 18
 Thylotriadinae 7
Thylotrias 5, 7, 15, 19, 36, 37, 44
Thylotrias contractus 7, 19, 37, 44; figs 4, 5,
 182, 195, 202, 207
 Thylotriidae 7
 Thylotriini 7
Tiresias see *Ctesias*
Tiresias plantaris see *Globicornis nigripes*
 tobacco seed beetle 24, 52
Trinodes 9, 10, 32, 36, 44, 66; fig. 6
Trinodes hirtus 9, 14, 32, 44, 66; figs 8, 20, 177,
 178, 203, 209
 Trinodinae 9, 18, 32
Trogoderma 5, 8, 9, 10, 11, 12, 13, 14, 16, 17,
 25, 26, 37, 41, 55
Trogoderma boron 8
 angustum 14
 glabrum 8, 14, 26, 27, 42, 55; figs 95, 104,
 105, 123, 126, 130, 134, 189, 189d, 213,
 283, 290
 granarium 8, 10, 14, 16, 26, 27, 41, 55, 56,
 57; figs 88, 94, 108, 109, 189b, 192, 200,
 284, 288
 inclusum 8, 26, 27, 41, 56, 57; figs 13, 97,
 106, 107, 122, 124, 127, 131, 135, 189c,
 286, 289
 khapra 8
 ornatum 14
 parabile 8
 variabile 6, 8, 16, 26, 27, 41, 57; figs 96, 110,
 111, 125, 129, 133, 137, 138, 189a, 212,
 285, 287
 versicolor 14
 versicolor 8, 56
 two-spotted carpet beetle 24, 53
 varied carpet beetle 30, 61
 woolly aphid 5, 68
 woolly bear 30, 61
 zebra spider 29, 59

Notes added in proof

Additional reference

- BELLAS, T. E. 1989. *Insects as a cause of inhalant allergies. A bibliography 1900–1987*. Canberra: Division of Entomology, Commonwealth Scientific and Industrial Research Organization. [Replaces BELLAS, 1982, 1984.]

ISBN 0 901546 78 X