



Eyed Hawk-moth

Smerinthus ocellata



On the wing: May-July

Habitat: Gardens, orchards, woodland, parks, riversides

Wingspan: 70-80mm

Caterpillar Diet: Sallow, willow, apple*

Once emerged this species is a very handsome, velvety insect and despite its striking eye markings is completely harmless. Like all hawk-moth caterpillars it has a false sting on its tail and is also harmless. These intimidating physical characteristics serve to deter predators. *crab apple, poplars, aspen

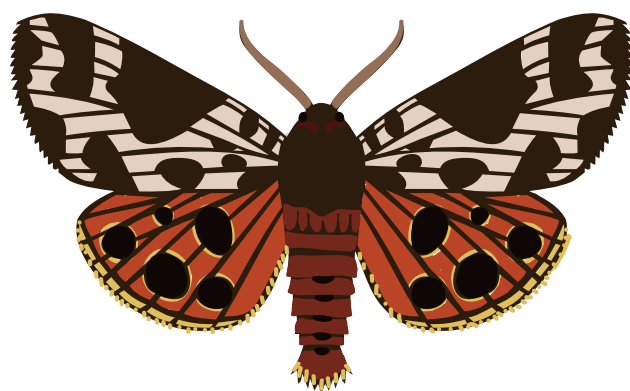
Sample extract from ***British Moths: to colour in and learn about***
ISBN: 9781999784317 complete book with 32 species available from

www.royensoc.co.uk - www.klickklack.uk



Garden Tiger Moth

Arctia caja



On the wing: July-August
Habitat: Damp meadows, riverbanks,
sand dunes, open woodland
Wingspan: 50-78mm
Caterpillar Diet: Nettle, dandelion*

The Garden Tiger is one of our better known moths and can be seen sitting about in the day or flying round lamps at night. The caterpillars, also known as "woolly bears" have a varied diet and can often be seen crawling rapidly over roads or open ground on hot days. *dock, hound's-tongue, bramble

Sample extract from ***British Moths: to colour in and learn about***
ISBN: 9781999784317 complete book with 32 species available from